

John Deere 724K 4WD Loader (SN.-641522) w.Engines 6090HDW03, 6090HDW09 Service Repair Manual (TM10697)

724K 4WD Loaders with
Engines 6090HDW03 (T3),
6090HDW09 (S2) Repair



REPAIR TECHNICAL MANUAL

4WD Loaders models 724K (SN. before 641522)

TM10697 04 MAR 16 (ENGLISH)

For complete service information also see:

724K 4WD Loaders with Engines 6090HDW03 (T3), 6090HDW09 (S2) Diagnostic	TM10696
Alternators and Starting Motors	CTM77
TMIV1200 - 1400 Series Inboard Planetary Axles	CTM442
PowerTech 9.0L QSMC Diesel Engines Stage IIIA Emissions Certified Base Engine	CTM400
PowerTech 6090 Diesel Engines High Pressure Coolers	
Super Caddy Oil Cleanup Product	
120 Series Hydraulic Cylinders	
185 Series Hydraulic Cylinders	CTM114919
4045 PowerTech Diesel Engines Below 130kW (174hp) (PWX & PVX Interim Tier 4/Stage IIIB) Level 23 ECU	CTM114619
120 Series Hydraulic Cylinders	CTM114319
125 Series Hydraulic Cylinders	CTM109319
COOLANT HEATER SERVICE MANUAL	CTM10090X19
JDLINK/ZXLINK Machine Monitoring System	CTM10006



DOWNLOAD



John Deere Construction and Forestry
Printed by Belgreen



Covers: 724K,641522)

Type: Service Manual

Language: English

Pages: 458

Format: PDF

Features: Bookmarked, searchable, printable

Compatibility: Windows/Mac/Tablet/Mobile

This service manual contains important information for the maintenance, troubleshooting and servicing of the **John Deere 724K 4WD Loader (SN.-641522) w.Engines 6090HDW03, 6090HDW09 Service Repair Manual (TM10697)**

In this manual you will find detailed specifications, illustrations, schematics, diagrams and step-by-step procedures to properly service and diagnose the machine to the manufacturer's standards.

Contents:

- General Information
- Specifications
- Serial Number Location
- Engine Specifications
- Engine Diagnostics
- Engine Tests and Adjustments
- Engine Repair
- Power Train
- Transmission
- Axles
- Differential
- PTO
- Hydraulic System
- Electrical System
- Electrical Tests and Diagnostics
- Wiring Diagram / Schematic
- Ignition and Charging
- Steering
- Brakes
- Wheels
- Operator's Platform
- Body Panels
- Disassembly and Assembly
- Diagnostics, Tests and Adjustments
- Troubleshooting
- and much more...

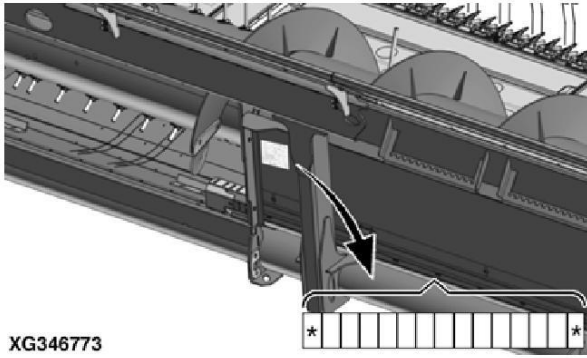
Please note this manual is in **downloadable PDF format only**. If you have any questions about this product or would like to request sample pages, please contact us and reference the product name or SKU.

Product Identification Number

XG346773-UN: Product ID Number Plate Location

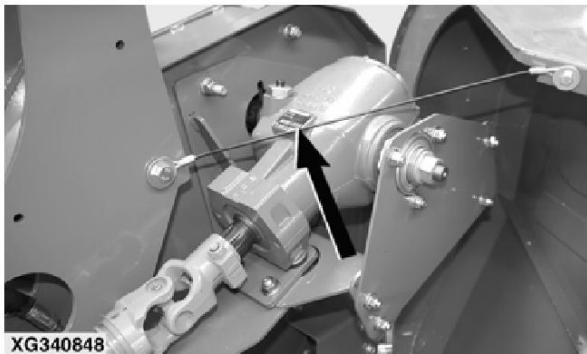
The product identification number is on the right side of the feeding channel.

OJCC002,00056E5-19-20180302



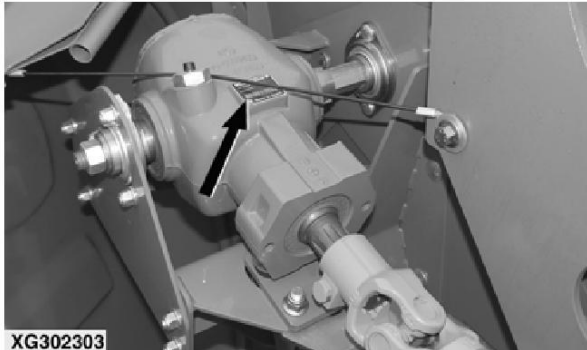
XG346773

Machine Component Serial Numbers



XG340848

XG340848-UN: Main Drive Gear Case—L.h Side

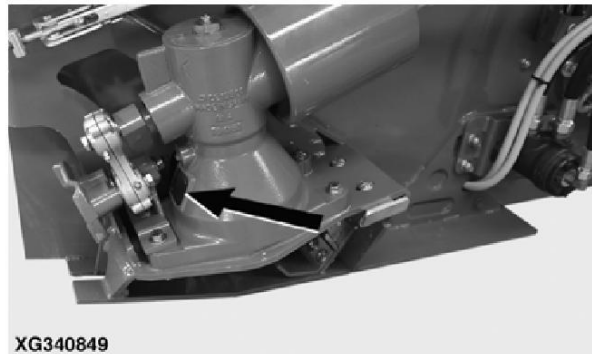


XG302303

XG302303-UN: Main Drive Gear Case—R.h Side (735PF and 740PF)

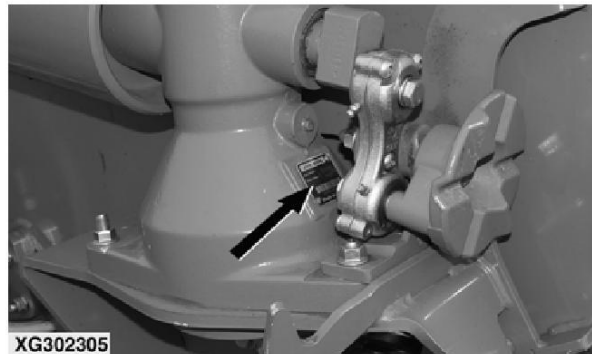
Main Drive Gear Case Serial Number

The serial number is on the main drive gear case housing.



XG340849

XG340849-UN: Knife Drive Gear Case—L.h Side



XG302305

XG302305-UN: Knife Drive Gear Case—R.h Side (735PF and 740PF)

Knife Drive Gear Case Serial Number

The serial number is on the knife drive gear case housing.

OJCC002,00056E6-19-20171219



Thank you very much
for your reading.
Please click here
to get more information.