

# John Deere 724K Loader (SN.-641522) w.Engines 6090HDW03, 6090HDW09 Diagnostic Service Manual (TM10696)

724K 4WD Loaders with  
Engines 6090HDW03 (T3),  
6090HDW09 (S2)  
Diagnostic



## OPERATION AND TEST MANUAL

4WD Loaders models 724K (SN. before 641522)

TM10696 04 MAR 16 (ENGLISH)

**For complete service information also see:**

724K 4WD Loader Engine 6090HDW03, Engine 6090HDW09 Repair	TM10697
Alternators and Starting Motors	CTM77
TM1V1200 - 1400 Series Inboard Planetary Axles	CTM442
PowerTech 9.0L OEM Diesel Engines 6090HDW03 / Stage IIIA Emissions Certified Base Engines	CTM400
PowerTech 6090 Diesel Engines High Pressure Compressors	
Super Caddy Oil Cleanup Products	
120 Series Hydraulic Cylinders	
185 Series Hydraulic Cylinders	CTM114919
4045 PowerTech Diesel Engines Below 5000 RPM (174hp) (PWX & PVX Interim Tier 4/Stage IIIB) Level 23 ECU	CTM114619
120 Series Hydraulic Cylinders	CTM114319
125 Series Hydraulic Cylinders	CTM109319
COOLANT HEATER SERVICE MANUAL	CTM10090X19
JDLINK/ZXLINK Machine Monitoring System	CTM10006

PDF



DOWNLOAD



John Deere Construction and Forestry  
Printed by Belgreen



TM10696

Covers: 724K,641522)

**Type:** Service Manual

**Language:** English

**Pages:** 1415

**Format:** PDF

**Features:** Bookmarked, searchable, printable

**Compatibility:** Windows/Mac/Tablet/Mobile

This service manual contains important information for the maintenance, troubleshooting and servicing of the **John Deere 724K Loader (SN.-641522) w.Engines 6090HDW03, 6090HDW09 Diagnostic Service Manual (TM10696)**

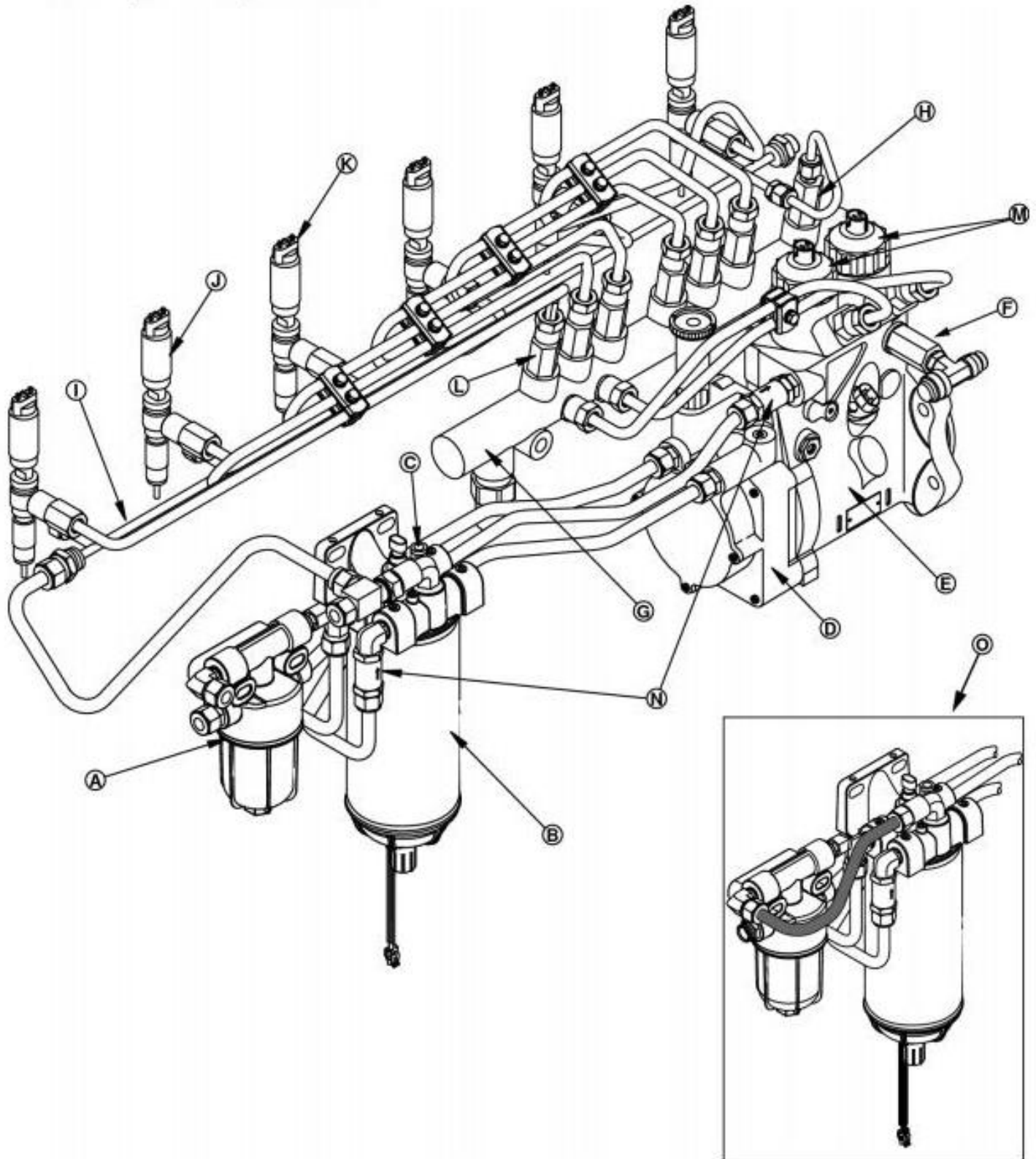
In this manual you will find detailed specifications, illustrations, schematics, diagrams and step-by-step procedures to properly service and diagnose the machine to the manufacturer's standards.

**Contents:**

- General Information
- Specifications
- Serial Number Location
- Engine Specifications
- Engine Diagnostics
- Engine Tests and Adjustments
- Engine Repair
- Power Train
- Transmission
- Axles
- Differential
- PTO
- Hydraulic System
- Electrical System
- Electrical Tests and Diagnostics
- Wiring Diagram / Schematic
- Ignition and Charging
- Steering
- Brakes
- Wheels
- Operator's Platform
- Body Panels
- Disassembly and Assembly
- Diagnostics, Tests and Adjustments
- Troubleshooting
- and much more...

Please note this manual is in **downloadable PDF format only**. If you have any questions about this product or would like to request sample pages, please contact us and reference the product name or SKU.

# Fuel System Operation



## Fuel System Operation

### LEGEND:

A	Primary Filter
B	Final Filter
C	Diagnostic Port
D	Fuel Transfer Pump
E	High Pressure Fuel Pump
F	Overflow Valve
G	High Pressure Common Rail (HPCR)
H	Pressure Limiter



Thank you very much  
for your reading.  
Please click here  
to get more information.