

# John Deere 753J, 759J (SN.C220453-) Tracked Feller Buncher Service Repair Technical Manual (TM12397)

## XCG 240LC-8B Excavator Repair

REPAIR TECHNICAL MANUAL

240LC-8B

TM11479 25JUN10 (ENGLISH)

For complete service information also see:

XCG 240LC-8B Excavator Diagnostic TM11478

INDUSTRIAL DIESEL ENGINE AA-4BG1T,  
AA-6BG1, BB-4BG1T, BB-6BG1T IDE2370EN  
Workshop Manual



XCG Construction and Forestry

Covers: 753J,1T0753JX\*\*C220453(???,759J,1T0759JX\*\*C220453??

**Type:** Service Manual

**Language:** English

**Pages:** 448

**Format:** PDF

**Features:** Bookmarked, searchable, printable

**Compatibility:** Windows/Mac/Tablet/Mobile

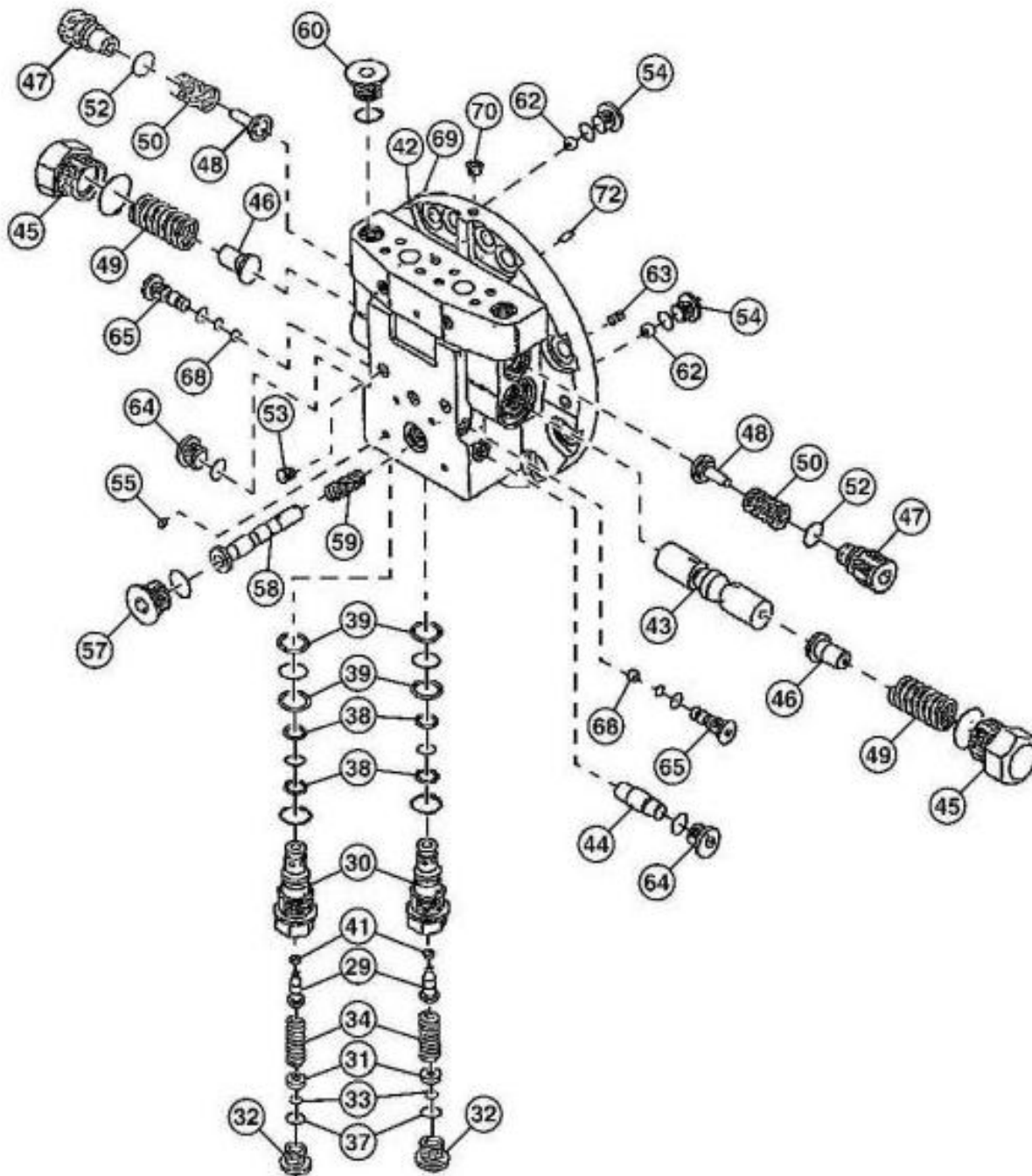
This service manual contains important information for the maintenance, troubleshooting and servicing of the **John Deere 753J, 759J (SN.C220453-) Tracked Feller Buncher Service Repair Technical Manual (TM12397)**

In this manual you will find detailed specifications, illustrations, schematics, diagrams and step-by-step procedures to properly service and diagnose the machine to the manufacturer's standards.

**Contents:**

- General Information
- Specifications
- Serial Number Location
- Engine Specifications
- Engine Diagnostics
- Engine Tests and Adjustments
- Engine Repair
- Power Train
- Transmission
- Axles
- Differential
- PTO
- Hydraulic System
- Electrical System
- Electrical Tests and Diagnostics
- Wiring Diagram / Schematic
- Ignition and Charging
- Steering
- Brakes
- Wheels
- Operator's Platform
- Body Panels
- Disassembly and Assembly
- Diagnostics, Tests and Adjustments
- Troubleshooting
- and much more...

Please note this manual is in **downloadable PDF format only**. If you have any questions about this product or would like to request sample pages, please contact us and reference the product name or SKU.



TX1070652

**Travel Motor Cover Components****LEGEND:**

29	Poppet (2 used)
30	Crossover Relief Valve (2 used)
31	Spring Guide (2 used)
32	Plug (2 used)
33	Shim (2 used)
34	Spring (2 used)
37	O-Ring (2 used)
38	Back-Up Ring (2 used)
39	Back-Up Ring (2 used)
41	O-Ring (2 used)
42	Travel Motor Cover
43	Counterbalance Spool
44	Shuttle Spool
45	Plug (2 used)
46	Spool Stop (2 used)



Thank you very much  
for your reading.  
Please click here  
to get more information.