

John Deere 792D LC Excavator Service Repair Technical Manual (tm1596)

792D LC Excavator Repair

REPAIR TECHNICAL MANUAL

792DLC

TM1596 21FEB05 (ENGLISH)

For complete service information also see:

792D LC Excavator Operation and Tests	tm1595
Alternators and Starting Motors	CTM77
Series 400, 6076 Diesel Engines	CTM42
JDG10274 Ultrasonic Undercarriage Measurement Gauge	CTM10001



John Deere Construction and Forestry

Covers: 792DLC

Type: Service Manual

Language: English

Pages: 525

Format: PDF

Features: Bookmarked, searchable, printable

Compatibility: Windows/Mac/Tablet/Mobile

This service manual contains important information for the maintenance, troubleshooting and servicing of the **John Deere 792D LC Excavator Service Repair Technical Manual (tm1596)**

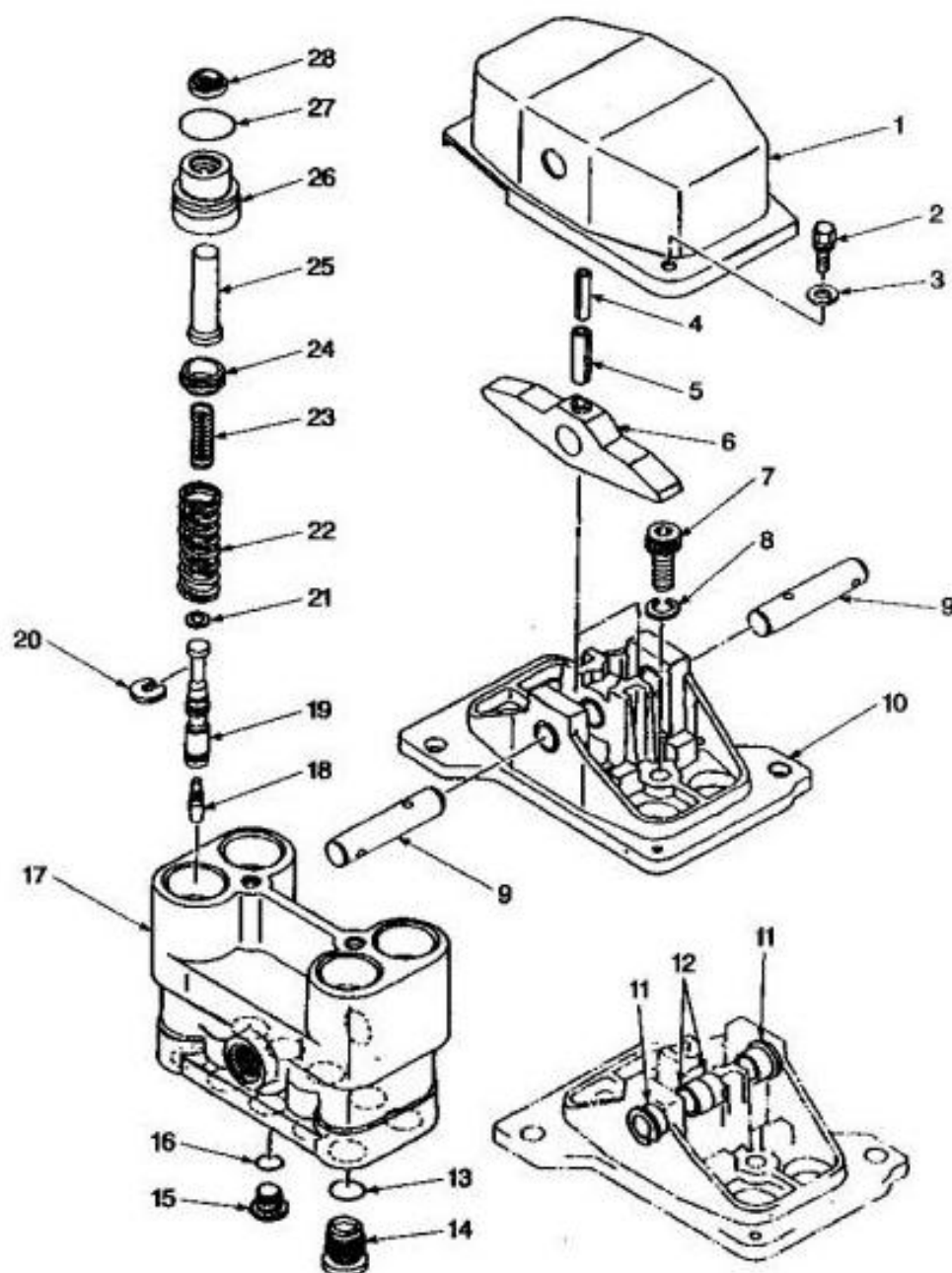
In this manual you will find detailed specifications, illustrations, schematics, diagrams and step-by-step procedures to properly service and diagnose the machine to the manufacturer's standards.

Contents:

- General Information
- Specifications
- Serial Number Location
- Engine Specifications
- Engine Diagnostics
- Engine Tests and Adjustments
- Engine Repair
- Power Train
- Transmission
- Axles
- Differential
- PTO
- Hydraulic System
- Electrical System
- Electrical Tests and Diagnostics
- Wiring Diagram / Schematic
- Ignition and Charging
- Steering
- Brakes
- Wheels
- Operator's Platform
- Body Panels
- Disassembly and Assembly
- Diagnostics, Tests and Adjustments
- Troubleshooting
- and much more...

Please note this manual is in **downloadable PDF format only**. If you have any questions about this product or would like to request sample pages, please contact us and reference the product name or SKU.

Disassemble And Assemble Propel Pilot Controller



Propel Pilot Controller

LEGEND:

- | | |
|----|----------------------|
| 1 | Cover |
| 2 | Cap Screw (2 used) |
| 3 | Lock Washer (2 used) |
| 4 | Spring Pin (2 used) |
| 5 | Spring Pin (2 used) |
| 6 | Cam (2 used) |
| 7 | Cap Screw (2 used) |
| 8 | Lock Washer (2 used) |
| 9 | Pin (2 used) |
| 10 | Holder |
| 11 | Bushing (2 used) |
| 12 | Bushing (2 used) |
| 13 | O-Ring |



Thank you very much
for your reading.
Please click here
to get more information.