

John Deere 824, 832, 840 Trailed Sprayers w.ELC-1/EHC-2/EL-4 unit Diagnostic Service Manual (tm4782)

444K 4WD Loader (S.N.
642101—670307) with
Engine 4045HDW56 (iT4)
Repair



REPAIR MANUAL

**4DW Loaders with Engine 4045HDW56 (iT4) models 444K (PIN:
1DW444K***E642101-670307)**

TM12091 22 FEB 16 (ENGLISH)

For complete service information also see:

444K 4WD Loaders (S.N. 642101-670307) with Engines 4045HDW56 (iT4)
Diagnostic

TM12089

JDLink (MTG) Technical Manual

TM114519

120 Series Hydraulic Cylinders

CTM120519

4045 PowerTech D
4/Stage IIIB) Level

120 Series Hydraulic Cylinder

125 Series Hydraulic Cylinder

PDF



DOWNLOAD



John Deere Construction and Forestry
Printed by Belgreen



TM12091

Covers: 824,832,840

Type: Service Manual

Language: English

Pages: 674

Format: PDF

Features: Bookmarked, searchable, printable

Compatibility: Windows/Mac/Tablet/Mobile

This service manual contains important information for the maintenance, troubleshooting and servicing of the **John Deere 824, 832, 840 Trailed Sprayers w.ELC-1/EHC-2/EL-4 unit Diagnostic Service Manual (tm4782)**

In this manual you will find detailed specifications, illustrations, schematics, diagrams and step-by-step procedures to properly service and diagnose the machine to the manufacturer's standards.

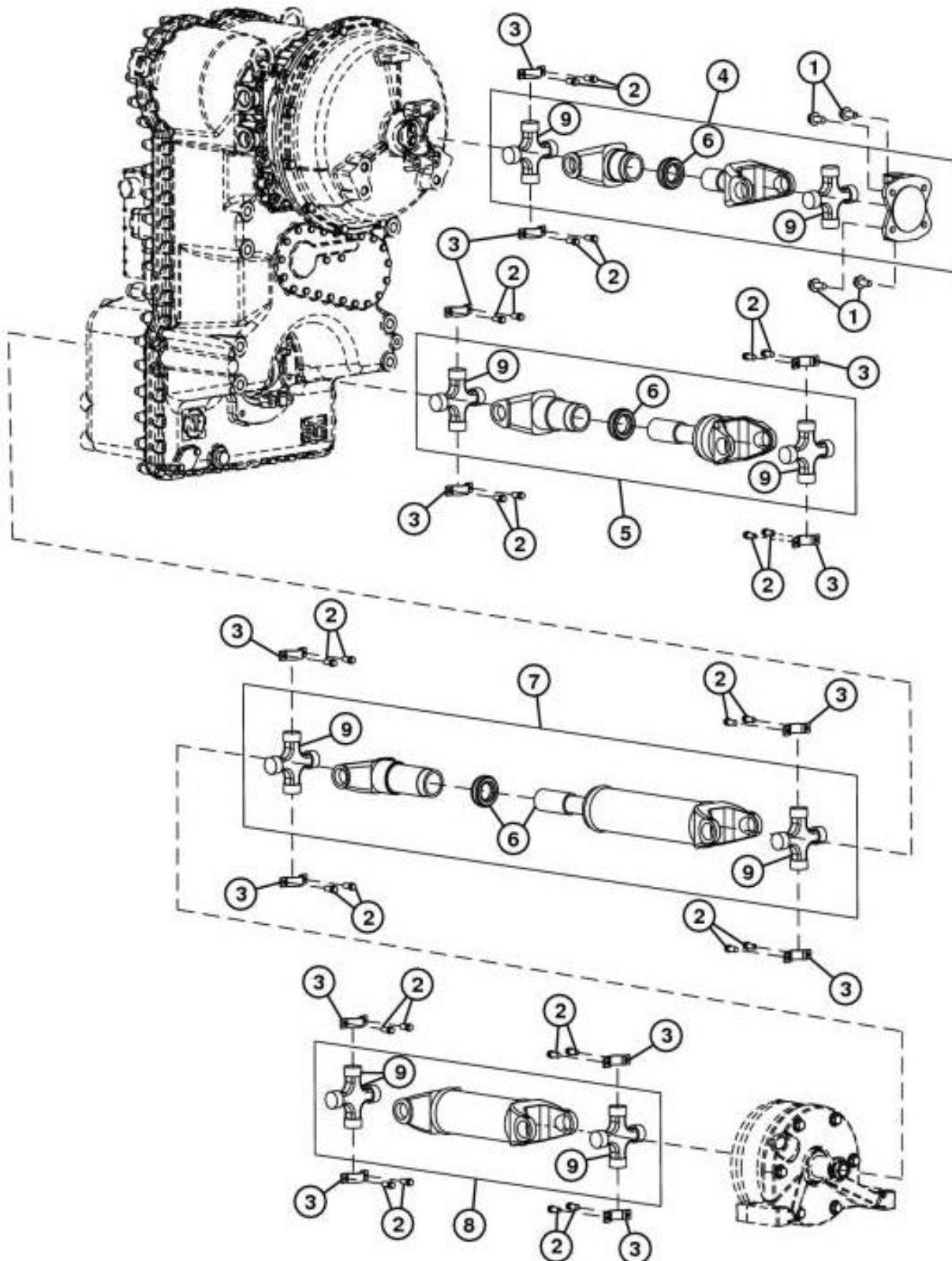
Contents:

- General Information
- Specifications
- Serial Number Location
- Engine Specifications
- Engine Diagnostics
- Engine Tests and Adjustments
- Engine Repair
- Power Train
- Transmission
- Axles
- Differential
- PTO
- Hydraulic System
- Electrical System
- Electrical Tests and Diagnostics
- Wiring Diagram / Schematic
- Ignition and Charging
- Steering
- Brakes
- Wheels
- Operator's Platform
- Body Panels
- Disassembly and Assembly
- Diagnostics, Tests and Adjustments
- Troubleshooting
- and much more...

Please note this manual is in **downloadable PDF format only**. If you have any questions about this product or would like to request sample pages, please contact us and reference the product name or SKU.

Group 0225 - Input Drive Shafts and U-joints

Universal Joint and Drive Shaft Remove and Install



TX1021732

Universal Joint and Drive Shaft Remove and Install

LEGEND:

- 1 Engine Shaft to Engine Cap Screw
- 2 Universal Joint Cap Screw



Thank you very much
for your reading.
Please click here
to get more information.