

# John Deere 844J 4WD Loader Diagnostic Diagnostic, Operation and Test Service Manual (TM2306)

**F4365 Dry Nutrient  
Applicator Diagnostic  
Technical Manual**



JOHN HARE



COLLECTION

**DIAGNOSTIC TECHNICAL MANUAL  
F4365 Dry Nutrient Applicator**

TM139919 01DEC18 (ENGLISH)



John Deere Des Moines  
Works

**Covers: 844J**

**Type:** Service Manual

**Language:** English

**Pages:** 601

**Format:** PDF

**Features:** Bookmarked, searchable, printable

**Compatibility:** Windows/Mac/Tablet/Mobile

This service manual contains important information for the maintenance, troubleshooting and servicing of the **John Deere 844J 4WD Loader Diagnostic Diagnostic, Operation and Test Service Manual (TM2306)**

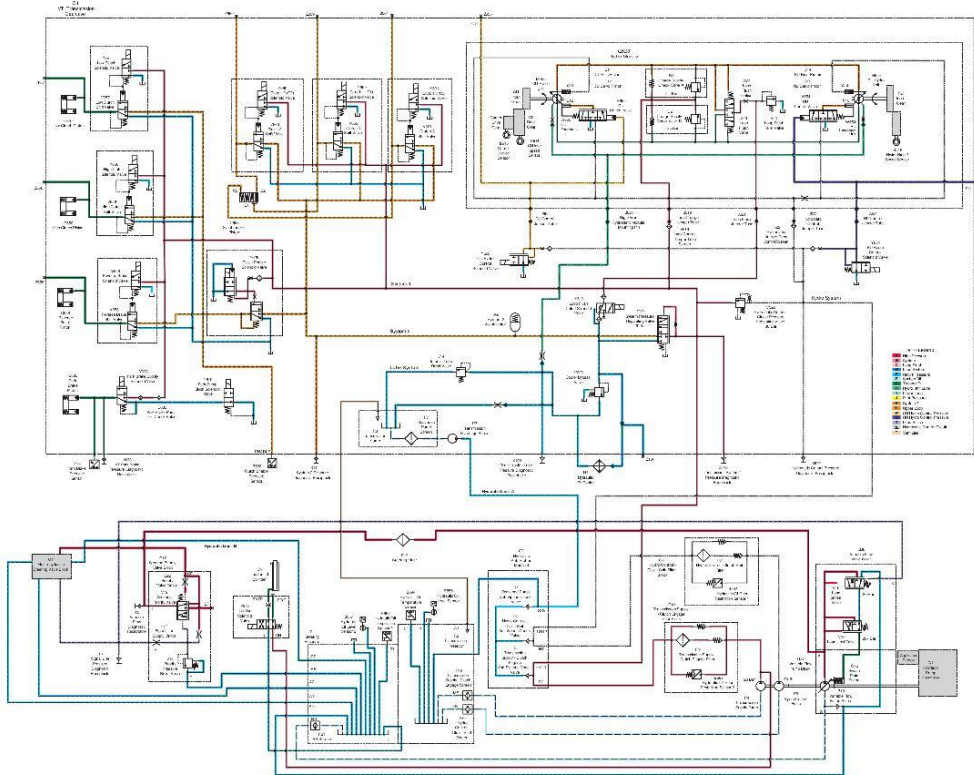
In this manual you will find detailed specifications, illustrations, schematics, diagrams and step-by-step procedures to properly service and diagnose the machine to the manufacturer's standards.

**Contents:**

- General Information
- Specifications
- Serial Number Location
- Engine Specifications
- Engine Diagnostics
- Engine Tests and Adjustments
- Engine Repair
- Power Train
- Transmission
- Axles
- Differential
- PTO
- Hydraulic System
- Electrical System
- Electrical Tests and Diagnostics
- Wiring Diagram / Schematic
- Ignition and Charging
- Steering
- Brakes
- Wheels
- Operator's Platform
- Body Panels
- Disassembly and Assembly
- Diagnostics, Tests and Adjustments
- Troubleshooting
- and much more...

Please note this manual is in **downloadable PDF format only**. If you have any questions about this product or would like to request sample pages, please contact us and reference the product name or SKU.

Transmission Hydraulic Circuit Schematic



N123258-JN: IVT™ —Transmission Hydraulic Circuit Schematic

LEGEND:

- A-High Pressure
- B-System 1
- C-Loop Flush
- D-Lubricating Pressure
- E-Return Pressure
- F-Suction Oil
- G-Trapped Oil
- H-Hydro Unit Lube
- J-Pilot Pressure
- K-System 2
- L-Hydrostatic Control Circuit
- P-CU Hydro Control Pressure
- Q-RU Hydro Control Pressure
- R-Load Sense
- T-Vent Line
- A2-System 2 Accumulator
- B514-B514 — CU Idler Sensor — G4 — Left Side)
- B515-B515 — Carrier Speed Sensor — G4 — Left Side)
- B516-B516 — Transmission Secondary Speed Sensor — G4 — Top Right)
- B518-B518 — Primary Speed Sensor - IV — G4 — Top Right)
- B526-B526 — Clutch Enable Pressure Sensor — G4 — Top Left)
- B552-B552 — Hydraulic Oil Filter Restriction Sensor 1 — G12 — Overall Components
- B555-B555 — Hydraulic Oil Level Sensor — R1 and R2 Overall Components
- B557-B557 — Hydraulic Oil Level Sensor 2 — R1 and R2 Overall Components
- B558-B558 — Hydraulic Oil Filter Restriction Sensor 2 — G12 — Overall Components
- B687-B687 — Hydraulic Oil Temperature Sensor 2 — R1 and R2 Overall Components
- B694-B694 — Hydraulic Oil Temperature Sensor — R1 and R2 Overall Components
- B707-B707 — Park Brake Pressure Sensor — G4 — Rear Lower)
- C4-C4 — Ladder Lift Cylinder
- C11-C11 — CU Bias Piston — G520 — Overall Components

- C12-C12 — CU Servo Piston — G520 — Overall Components
- C13-C13 — RU Servo Piston — G520 — Overall Components
- C14-C14 — RU Bias Piston — G520 — Overall Components
- C76-C76 — Swash Plate Piston
- C633-C633 — Park Brake Piston — G4 — Left Side
- C657-C657 — Low Clutch Piston
- C656-C656 — High Clutch Piston
- C658-C658 — Reverse Brake Piston
- C663-C663 — Synchronizer Piston
- D1-D1 — Charge Supply Check Valve A — G520 — Overall Components
- D2-D2 — Charge Supply Check Valve B — G520 — Overall Components
- D4-D4 — Hydro Control / Clutch Shift Anti-Siphon Check Valve
- D5-D5 — Transmission Supply / Clutch Engage Anti-Siphon Check Valve
- D7-D7 — Scavenge Pump Anti-Siphon Check Valve — G4 — Left Side
- D633-D633 — Park Brake Pump OFF Check Valve — G4 — Left Side)
- F7-F7 — Transmission Scavenge Pump Inlet Screen
- F19-F19 — Steering Filter— G12 — Overall Components
- F21-F21 — RS Screen — R1 and R2 Overall Components
- F40-F40 — Transmission Supply - Clutch Engage Screen — R1 and R2 Overall Components
- F41-F41 — Transmission Supply - Clutch Engage Filter— G12 — Overall Components
- F80-F80 — Hydro Control - Clutch Shift Screen — R1 and R2 Overall Components
- F81-F81 — Hydro Control - Clutch Shift Filter — G12 — Overall Components
- F519-F519 — Loop Charge Jumper Screen — G4 — Left Side)

- F522-F522 — Hydrostatic Jumper Tube Screen — G4 — Left Side)
- G1-G1 — Hydraulic Pump Gearcase — G1 — Overall Components
- G2-G2 — Hydraulic Anti-Siphon Manifold — R1 and R2 Overall Components
- G4-IVT Transmission Gearcase — G4 — Left Side
- G4 — Rear Lower
- G4 — Top Right
- G4 — Top Left
- G11-G11 — Electrohydraulic Steering Valve Block — G11 — Overall Components
- G12-G12 — Steering Priority Valve Block — G12 — Overall Components
- G37-G37 — Variable Flow Pump Block — G1 — Overall Components
- G38-G38 — Variable Flow Valve Block — G1 — Overall Components
- G41-G41 — Transmission Supply - Clutch Engage Filter Block — G12 — Overall Components
- G81-G81 — Hydro Control - Clutch Shift Filter Block — G12 — Overall Components
- G520-G520 — Overall Components — Hydro Module
- H1-H1 — Hydraulic Oil Cooler
- J519-J519 — Loop Charge Jumper Tube — G4 — Rear Lower)
- J620-J520 — Right Front Hydrostatic Module Mounting Pin
- J521-J521 — Loop Flush Jumper Tube
- J522-J522 — Hydrostatic Control Jumper Tube — G4 — Rear Lower)
- J654-J654 — RU Control Jumper Tube — G4 — Rear Lower
- J655-J655 — CU Control Jumper Tube — G4 — Rear Lower
- M654-M654 — RU Hydro Unit — G520 — Overall Components
- M655-M655 — CU Hydro Unit — G520 — Overall Components



Thank you very much  
for your reading.  
Please click here  
to get more information.