

# John Deere 870G, 870GP, 872G, 872GP (SN.F678818-680877) Motor Graders Diagnostic Manual (TM14071X19)

**9300T, 9400T,  
9320T, 9420T,  
9520T, 9620T  
Tractor - Repair**



**REPAIR MANUAL**

**9300T, 9400T, 9320T, 9520T, 9420T, 9620T (SN: 000000-090257,  
090258-901000, 090257-901000, 901001-, -)**

**TM1782 28APR10 (ENGLISH)**

For complete service information also see:

9320T, 9420T, 9520T and 9620T Tractors Operation and Test	TM1982
AMS Systems and Components and Tests	TM1909
9300T and 9400T Test	
9300T and 9400T Tractors Test	
Alternators and Starting Motors	CTM77
18-SPEED PST ? Operation, Test, and Diagnostics with PCU controller	CTM280
PowerTech 10.5L and 12.5L Diesel Engines Level 6 Electronic Fuel Systems With Lucas EUIs	CTM188
18-Speed PST Repair Manual	CTM168
10.5 L and 12.5 L Diesel Engines Base Engine	CTM100

**PDF**  **DOWNLOAD** 

John Deere Agriculture

**Covers:** 870G,1DW870GX\_,\_F678818-680877),870GP,1DW870GP\_,\_

**Type:** Service Manual

**Language:** English

**Pages:** 1181

**Format:** PDF

**Features:** Bookmarked, searchable, printable

**Compatibility:** Windows/Mac/Tablet/Mobile

This service manual contains important information for the maintenance, troubleshooting and servicing of the **John Deere 870G, 870GP, 872G, 872GP (SN.F678818-680877) Motor Graders Diagnostic Manual (TM14071X19)**

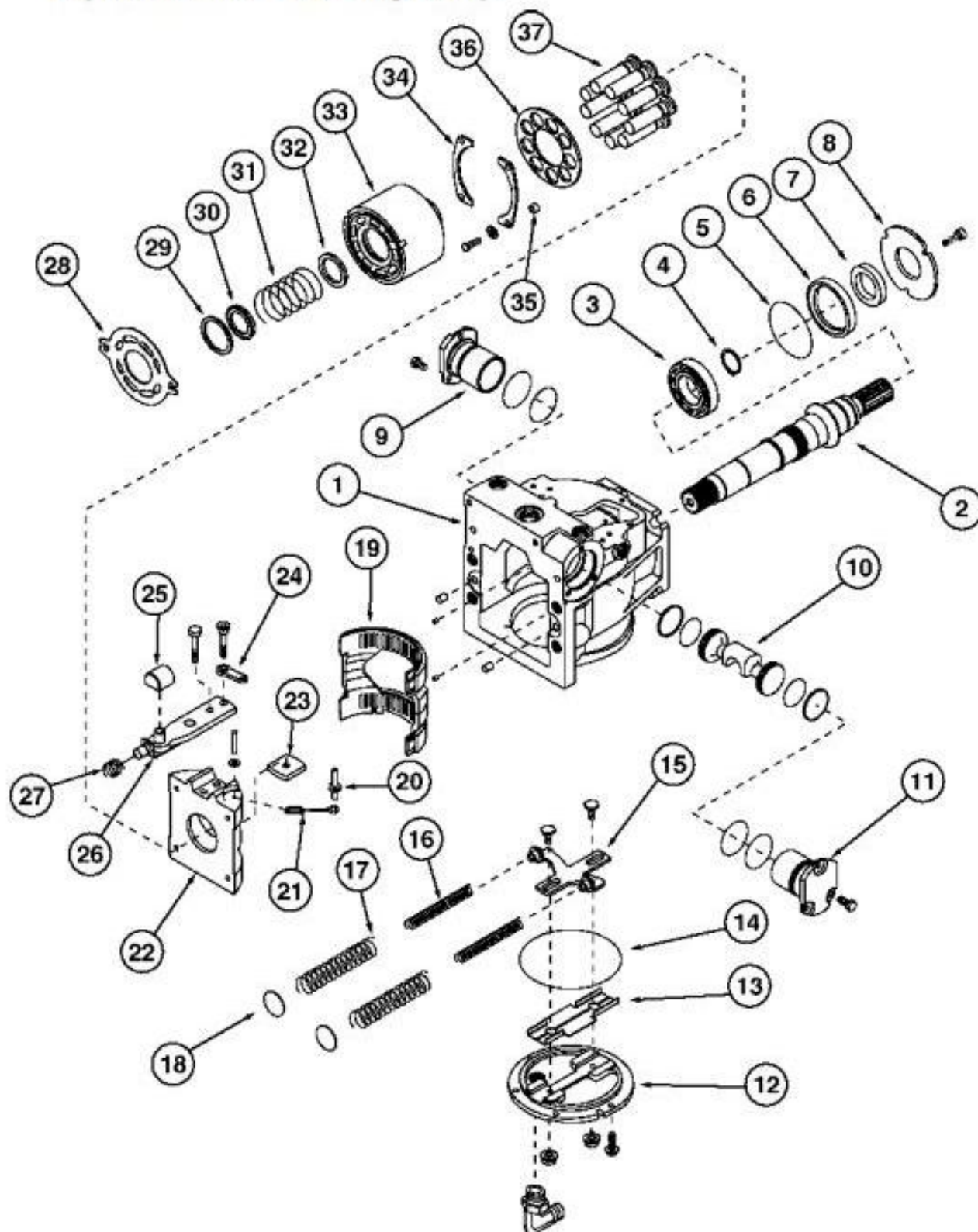
In this manual you will find detailed specifications, illustrations, schematics, diagrams and step-by-step procedures to properly service and diagnose the machine to the manufacturer's standards.

**Contents:**

- General Information
- Specifications
- Serial Number Location
- Engine Specifications
- Engine Diagnostics
- Engine Tests and Adjustments
- Engine Repair
- Power Train
- Transmission
- Axles
- Differential
- PTO
- Hydraulic System
- Electrical System
- Electrical Tests and Diagnostics
- Wiring Diagram / Schematic
- Ignition and Charging
- Steering
- Brakes
- Wheels
- Operator's Platform
- Body Panels
- Disassembly and Assembly
- Diagnostics, Tests and Adjustments
- Troubleshooting
- and much more...

Please note this manual is in **downloadable PDF format only**. If you have any questions about this product or would like to request sample pages, please contact us and reference the product name or SKU.

## Exploded View—Steering Pump



**Exploded View of Steering Pump**

**LEGEND:**

- |   |                |
|---|----------------|
| 1 | Pump Housing   |
| 2 | Pump Shaft     |
| 3 | Bearing        |
| 4 | Retaining Ring |
| 5 | O-Ring         |
| 6 | Seal Carrier   |
| 7 | Lip Seal       |



Thank you very much  
for your reading.  
Please click here  
to get more information.