

# John Deere 9370R 9420R/RX 9470R/RX 9520R/RX 9570R/RX 9620R/RX Tractors Repair Manual (TM146719)

524K 4WD Loader (SN.  
D670308-677548) Repair



## REPAIR TECHNICAL MANUAL

4WD Loaders models 524K (PIN: 1DW524K\*\*\*D670308-677548)

TM13371X19 22 FEB 16 (ENGLISH)

**For complete service information also see:**

524K 4WD Loader (SN. D670308-677548) Diagnostic

TM13365X19

JDLINK (MTG) Technical Manual

TM114519

PowerTech E 4.5 and 6.8L Diesel Engines Level 16 Electronic Fuel System With Denso HPCR

CTM502

TMIV1200 - 1400 Series Hydraulic

CTM442

120 Series Hydraulic

PowerTech 4.5L G3/Stage IIIA, Tier 3/Stage IIA



John Deere Construction and Forestry  
Printed by Belgreen



**Covers:** 9370R,056000,9420R,056000,9420RX,804000,9470R,056000,94

**Type:** Service Manual

**Language:** English

**Pages:** 1168

**Format:** PDF

**Features:** Bookmarked, searchable, printable

**Compatibility:** Windows/Mac/Tablet/Mobile

This service manual contains important information for the maintenance, troubleshooting and servicing of the **John Deere 9370R 9420R/RX 9470R/RX 9520R/RX 9570R/RX 9620R/RX Tractors Repair Manual (TM146719)**

In this manual you will find detailed specifications, illustrations, schematics, diagrams and step-by-step procedures to properly service and diagnose the machine to the manufacturer's standards.

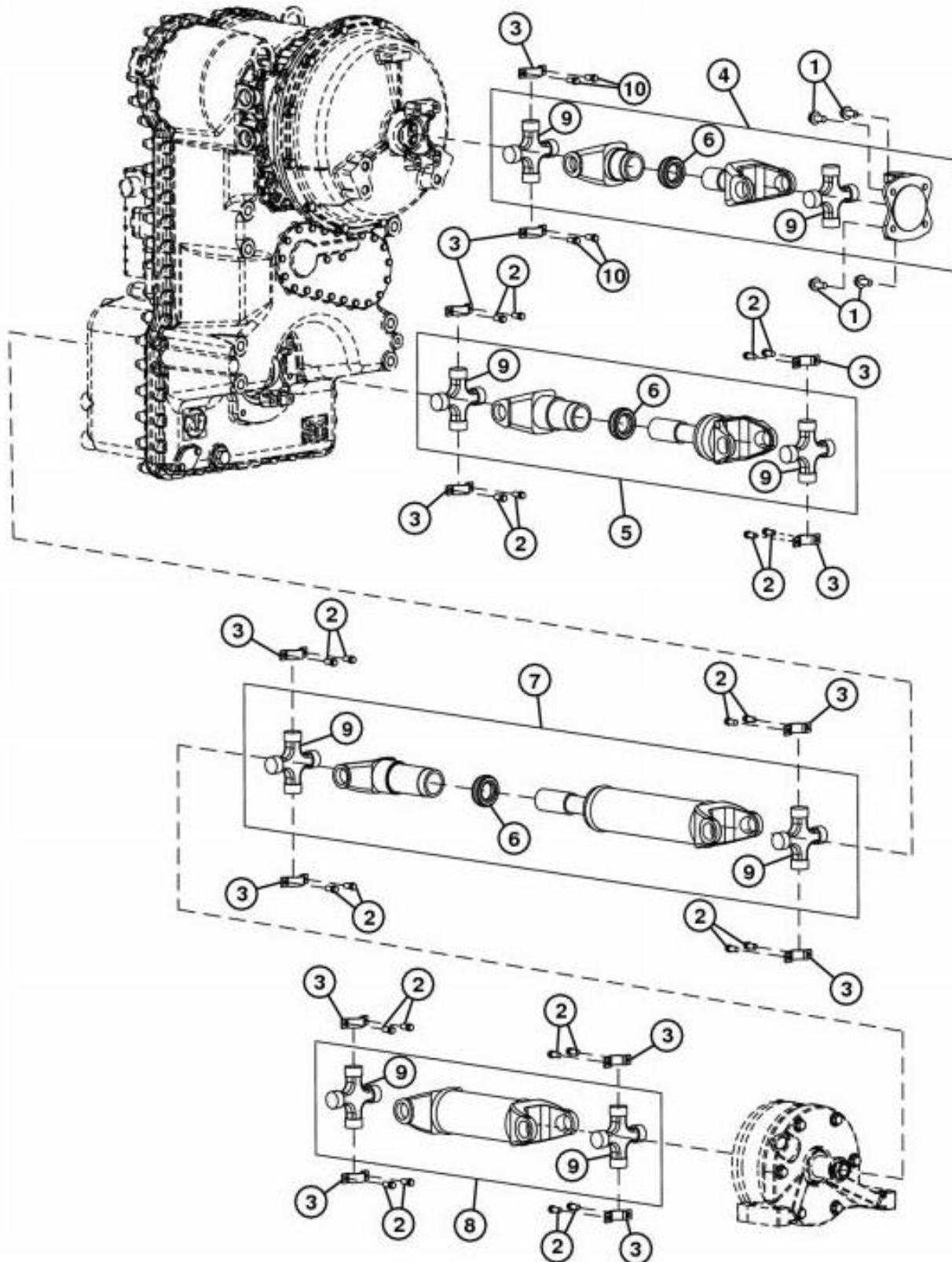
**Contents:**

- General Information
- Specifications
- Serial Number Location
- Engine Specifications
- Engine Diagnostics
- Engine Tests and Adjustments
- Engine Repair
- Power Train
- Transmission
- Axles
- Differential
- PTO
- Hydraulic System
- Electrical System
- Electrical Tests and Diagnostics
- Wiring Diagram / Schematic
- Ignition and Charging
- Steering
- Brakes
- Wheels
- Operator's Platform
- Body Panels
- Disassembly and Assembly
- Diagnostics, Tests and Adjustments
- Troubleshooting
- and much more...

Please note this manual is in **downloadable PDF format only**. If you have any questions about this product or would like to request sample pages, please contact us and reference the product name or SKU.

## Group 0225 - Input Drive Shafts and U-Joints

### Universal Joint and Drive Shaft Remove and Install



TX1199843

#### Universal Joint and Drive Shaft Remove and Install

##### LEGEND:

- 1 Engine Drive Shaft-to-Engine Cap Screw (4 used)
- 2 Drive Shaft Universal Joint Cap Screw (24 used)



Thank you very much  
for your reading.  
Please click here  
to get more information.