

John Deere 9560i STS, 9880 STS, 9880i STS Combines Service Repair Technical Manual (TM2201)

4500, 4600 and 4700 Compact Utility Tractors

TECHNICAL MANUAL



John Deere
Commercial and Consumer
Equipment Division

TM1679 (Jun00)
Replaces TM1679 (Oct99)

Litho in U.S.A

Covers: 9560i,9880,9880i

Type: Service Manual

Language: English

Pages: 1750

Format: PDF

Features: Bookmarked, searchable, printable

Compatibility: Windows/Mac/Tablet/Mobile

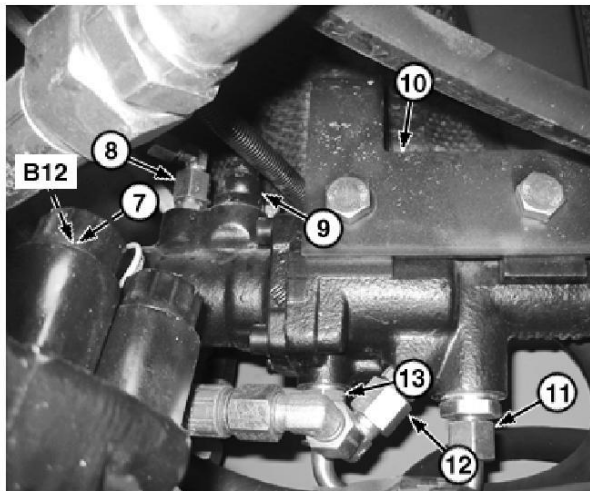
This service manual contains important information for the maintenance, troubleshooting and servicing of the **John Deere 9560i STS, 9880 STS, 9880i STS Combines Service Repair Technical Manual (TM2201)**

In this manual you will find detailed specifications, illustrations, schematics, diagrams and step-by-step procedures to properly service and diagnose the machine to the manufacturer's standards.

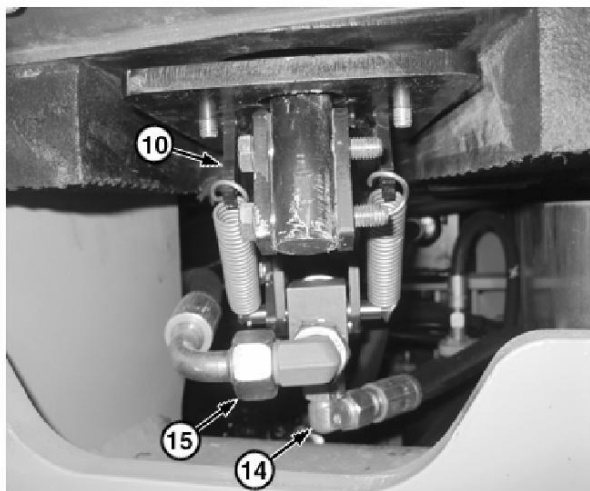
Contents:

- General Information
- Specifications
- Serial Number Location
- Engine Specifications
- Engine Diagnostics
- Engine Tests and Adjustments
- Engine Repair
- Power Train
- Transmission
- Axles
- Differential
- PTO
- Hydraulic System
- Electrical System
- Electrical Tests and Diagnostics
- Wiring Diagram / Schematic
- Ignition and Charging
- Steering
- Brakes
- Wheels
- Operator's Platform
- Body Panels
- Disassembly and Assembly
- Diagnostics, Tests and Adjustments
- Troubleshooting
- and much more...

Please note this manual is in **downloadable PDF format only**. If you have any questions about this product or would like to request sample pages, please contact us and reference the product name or SKU.



8. TX1147597A-UN: Brake-Inching Valve Assembly



TX1147598A-UN: Brake-Inching Valve (end view)

LEGEND:

7-Electrical Connector

8-Hydraulic Hose

9-Hydraulic Hose

10-Brake-Inching Valve Assembly

11-Hydraulic Hose

12-Hydraulic Hose

13-Hydraulic Hose

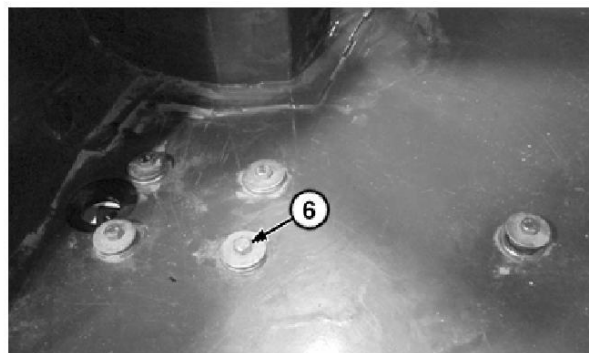
14-Hydraulic Hose

15-Hydraulic Hose

B12-Brake Lights Pressure Switch

Install identification tags and disconnect hydraulic hoses (8, 9, and 11—15). Close all openings using caps and plugs. See Service and Park Brake System Component Location - document TM14271X19 - (Group 9020-10.)

- Disconnect electrical connector (7) from brake lights pressure switch (B12).



10. TX1147599A-UN: Brake-Inching Valve Cap Screws

LEGEND:

6-Cap Screw (5 used)

Remove cap screws (6).

- Remove brake-inching valve assembly (10).
- Repair or replace parts as necessary.
- Install brake-inching valve assembly. Tighten cap screws.
- Connect electrical connector.
- Connect hydraulic hoses. See Service and Park Brake System Component Location - document TM14271X19 - (Group 9020-10.)
- Install brake pedal.
- Install cab front cover.
- Install center access cover.
- Turn battery disconnect switch to the ON position. See Battery Disconnect Switch - document OMT401205X19 - (Operator's Manual.)
- Fill hydraulic system. See Drain and Refill Hydraulic Oil - document OMT401205X19 - (Operator's Manual.)
- Perform hydrostatic start-up procedure. See [Hydrostatic Start-Up Procedure](#). (Group 0300.)
- Perform hydraulic start-up procedure. See [Hydraulic Start-Up Procedure](#). (Group 2160.)
- Operate machine and check for leaks.

DB95148,000282D-19-20171120



Thank you very much
for your reading.
Please click here
to get more information.