

John Deere 992E-LC Excavator Service Repair Technical Manual (tm1560)

992E-LC Excavator Repair

REPAIR TECHNICAL MANUAL

992ELC

TM1560 21FEB05 (ENGLISH)

For complete service information also see:

| | |
|--|----------|
| 992ELC Excavator Diagnostic | TM1559 |
| Alternators and Starting Motors | CTM77 |
| Series 500, 6101 Engine | CTM61 |
| JDG10274 Ultrasonic Undercarriage Measurement Gauge | CTM10001 |



John Deere Construction and Forestry

Covers: 992ELC

Type: Service Manual

Language: English

Pages: 656

Format: PDF

Features: Bookmarked, searchable, printable

Compatibility: Windows/Mac/Tablet/Mobile

This service manual contains important information for the maintenance, troubleshooting and servicing of the **John Deere 992E-LC Excavator Service Repair Technical Manual (tm1560)**

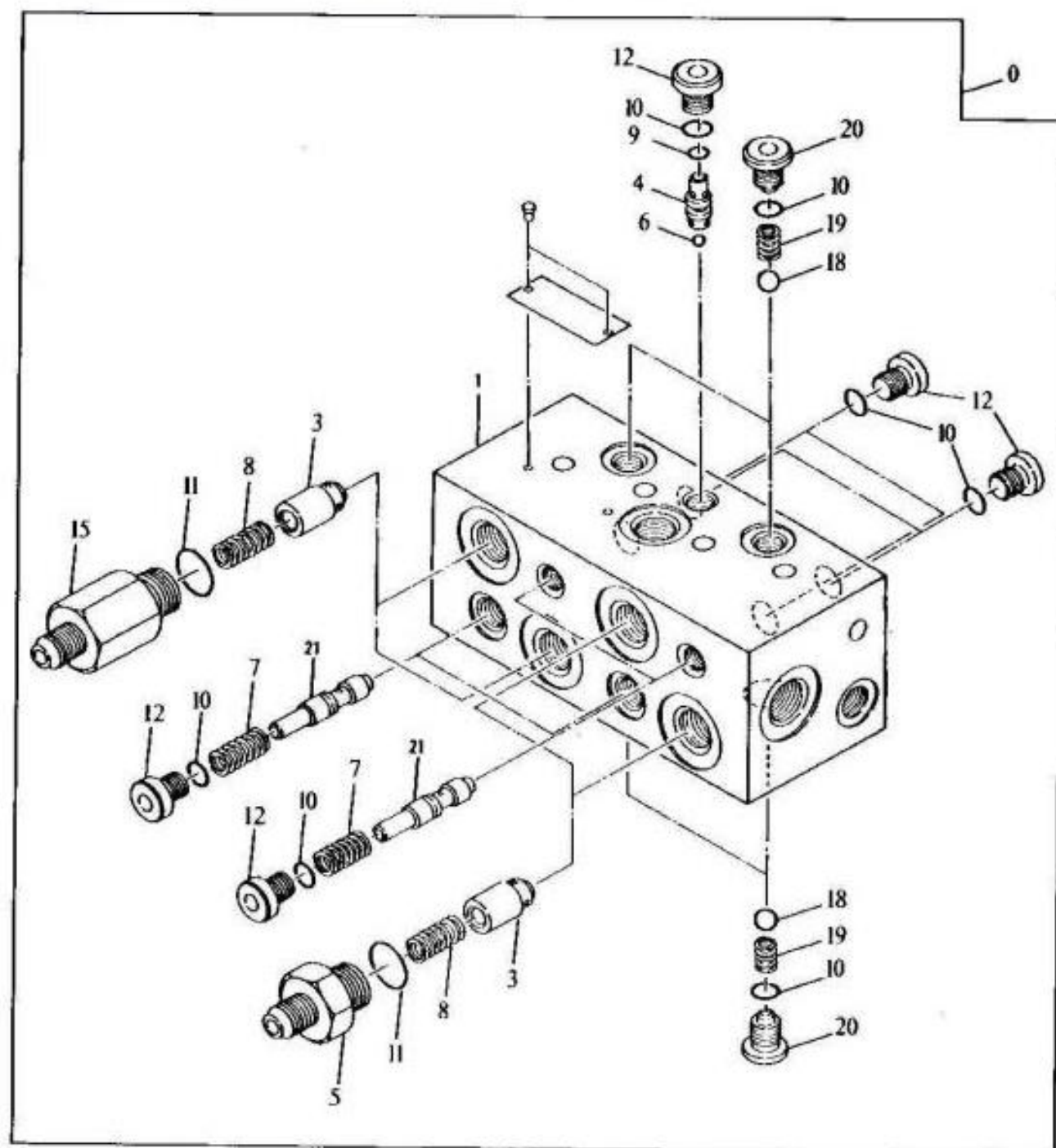
In this manual you will find detailed specifications, illustrations, schematics, diagrams and step-by-step procedures to properly service and diagnose the machine to the manufacturer's standards.

Contents:

- General Information
- Specifications
- Serial Number Location
- Engine Specifications
- Engine Diagnostics
- Engine Tests and Adjustments
- Engine Repair
- Power Train
- Transmission
- Axles
- Differential
- PTO
- Hydraulic System
- Electrical System
- Electrical Tests and Diagnostics
- Wiring Diagram / Schematic
- Ignition and Charging
- Steering
- Brakes
- Wheels
- Operator's Platform
- Body Panels
- Disassembly and Assembly
- Diagnostics, Tests and Adjustments
- Troubleshooting
- and much more...

Please note this manual is in **downloadable PDF format only**. If you have any questions about this product or would like to request sample pages, please contact us and reference the product name or SKU.

Disassemble And Assemble Flow Regulator Valve



Dig Function Pilot Flow Regulator Valve

LEGEND:

| | |
|----|---|
| 0 | Dig Function Pilot Flow Regulator Valve |
| 3 | Plunger (4 used) |
| 4 | Guide |
| 5 | Threaded Nipple (2 used) |
| 6 | Ball |
| 7 | Spring (4 used) |
| 8 | Spring (4 used) |
| 9 | O-Ring |
| 10 | O-Ring (13 used) |
| 11 | Packing (4 used) |
| 12 | Plug (9 used) |
| 15 | Threaded Nipple (2 used) |



Thank you very much
for your reading.
Please click here
to get more information.