


# John Deere E130, E130LC (SN.from D300013) Excavator Operation & Test Technical Manual (TM14152X19)



844J 4WD Loader Repair




**REPAIR TECHNICAL MANUAL**  
**4WD Loaders models 844J**  
TM2307 16 FEB 16 (ENGLISH)

**For complete service information also see:**

185 Series Hydraulic Cylinders	TM-H185A
844J 4WD Loader Diagnostic	TM2306
JDLink (MTG) Technical Manual	TM114519
Alternators and Starting Motors	CTM77
Super Caddy Oil C	CTM310
PowerTech 10.5 L	
Lucas EUIs	
120 Series Hydraulic Cylinders	
185 Series Hydraulic Cylinders	
120 Series Hydraulic Cylinders	CTM114319
JDLink/ZXLink Machine Monitoring System	CTM10006
PowerTech 10.5 L & 12.5 L Diesel Base Engine	CTM100

  **DOWNLOAD**

John Deere Construction and Forestry  
Printed by Belgreen



TM2307

**Covers:** E130,1YNE14A\_,\_D300013(???) ,E130LC,1YNE13A\_,\_D300003

**Type:** Service Manual

**Language:** English

**Pages:** 503

**Format:** PDF

**Features:** Bookmarked, searchable, printable

**Compatibility:** Windows/Mac/Tablet/Mobile

This service manual contains important information for the maintenance, troubleshooting and servicing of the **John Deere E130, E130LC (SN.from D300013) Excavator Operation & Test Technical Manual (TM14152X19)**

In this manual you will find detailed specifications, illustrations, schematics, diagrams and step-by-step procedures to properly service and diagnose the machine to the manufacturer's standards.

**Contents:**

- General Information
- Specifications
- Serial Number Location
- Engine Specifications
- Engine Diagnostics
- Engine Tests and Adjustments
- Engine Repair
- Power Train
- Transmission
- Axles
- Differential
- PTO
- Hydraulic System
- Electrical System
- Electrical Tests and Diagnostics
- Wiring Diagram / Schematic
- Ignition and Charging
- Steering
- Brakes
- Wheels
- Operator's Platform
- Body Panels
- Disassembly and Assembly
- Diagnostics, Tests and Adjustments
- Troubleshooting
- and much more...

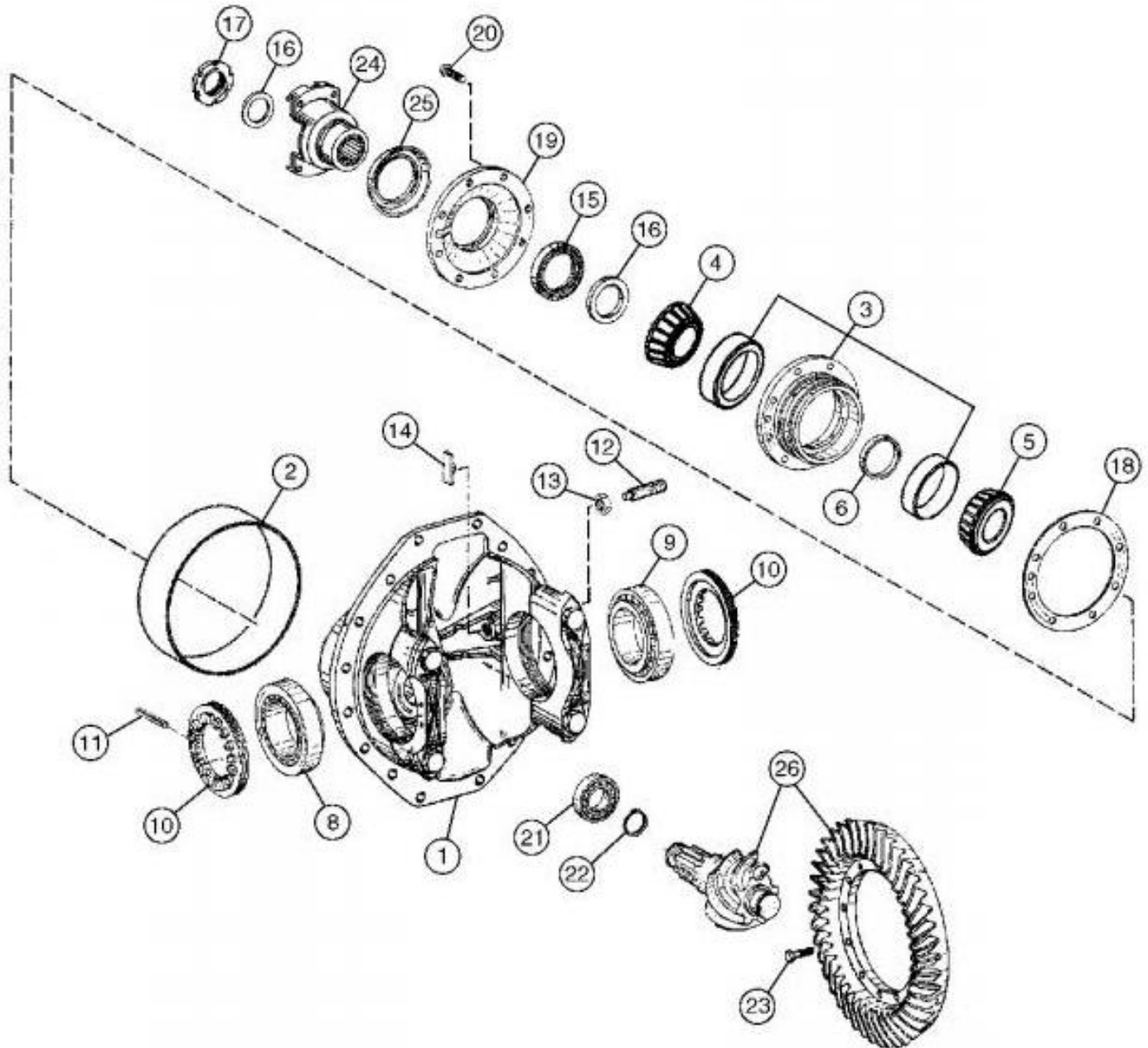
Please note this manual is in **downloadable PDF format only**. If you have any questions about this product or would like to request sample pages, please contact us and reference the product name or SKU.

Item

Measurement

Specification

450 lb.



T212265

**Differential Carrier (rear shown)**

**LEGEND:**

- 1 Differential Housing (rear shown)
- 2 Bushing (used on rear differential only)
- 3 Housing and Bearing Outer Race



Thank you very much  
for your reading.  
Please click here  
to get more information.