

John Deere M952, M962, M952i, M962i Trailed Crop Sprayers Diagnostic&Tests Service Manual (TM403619)

**3756G and 3756GLC Log
Loader Repair**
(PIN: 1FF7576G__D376001—)



JOHN HARE



COLLECTION

REPAIR TECHNICAL MANUAL

**3756G and 3756GLC Log Loader (PIN: 1FF7576G_
_D376001—)**

TM14020X19 01DEC18 (ENGLISH)

For complete service information also see:

3756G and 3756GLC Log Loader Operation and Test..... TM14019X19
3756G and 3756GLC Log Loader Operators Manual OMT351533X19
PowerTech 6090 Diesel Engine Level 14 ElectronicFuel
System with the Denso High Pressure Compressor
(HPCR) Level 14 ECU..... 85
PowerTech 9.0L OEM Diesel Engine Level 14 Emissions Certified Ba

PDF



DOWNLOAD



Worldwide Construction and
Forestry Division

Covers: M952,M962,M952i,M962i

Type: Service Manual

Language: English

Pages: 1025

Format: PDF

Features: Bookmarked, searchable, printable

Compatibility: Windows/Mac/Tablet/Mobile

This service manual contains important information for the maintenance, troubleshooting and servicing of the **John Deere M952, M962, M952I, M962I Trailed Crop Sprayers Diagnostic&Tests Service Manual (TM403619)**

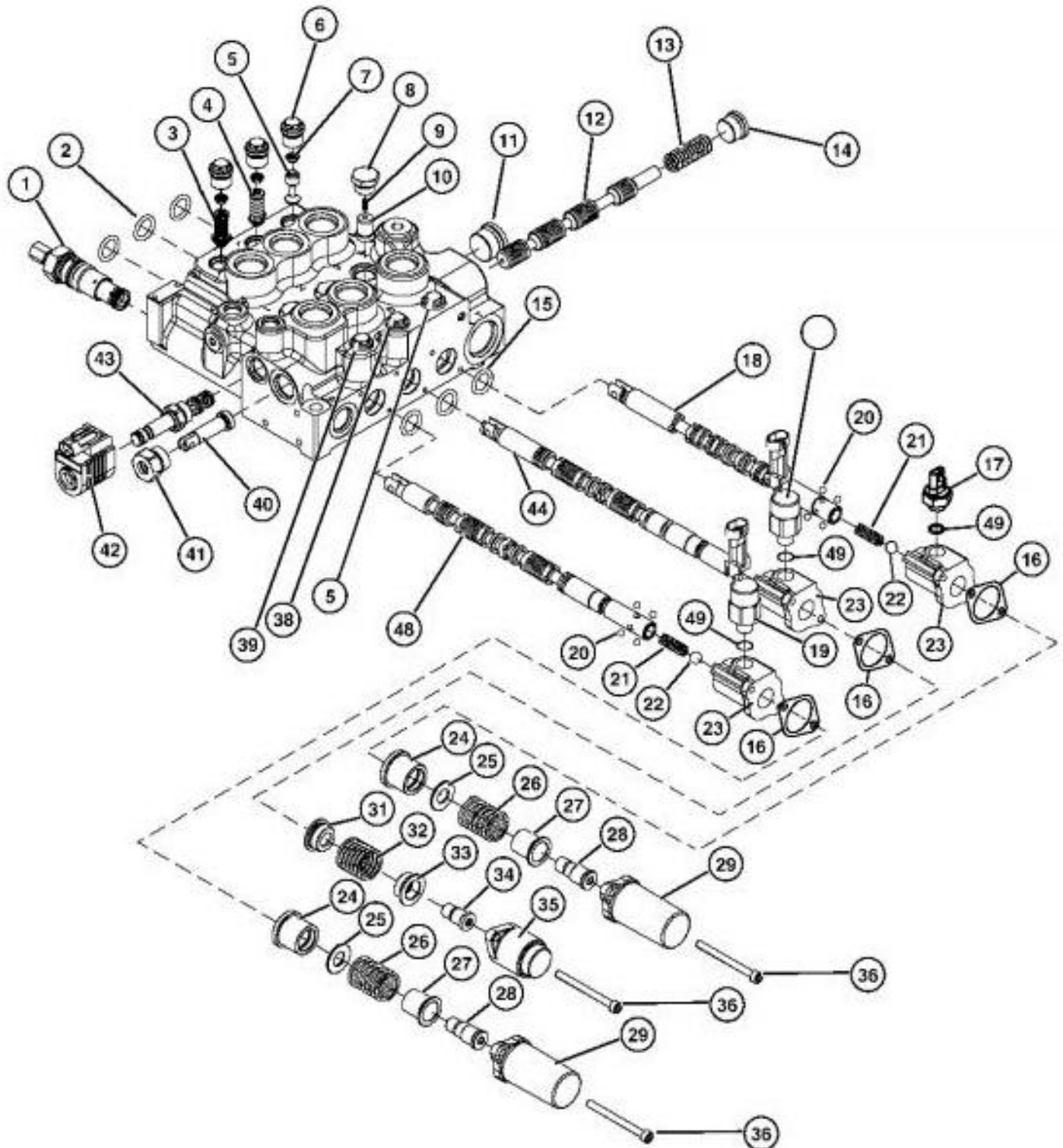
In this manual you will find detailed specifications, illustrations, schematics, diagrams and step-by-step procedures to properly service and diagnose the machine to the manufacturer's standards.

Contents:

- General Information
- Specifications
- Serial Number Location
- Engine Specifications
- Engine Diagnostics
- Engine Tests and Adjustments
- Engine Repair
- Power Train
- Transmission
- Axles
- Differential
- PTO
- Hydraulic System
- Electrical System
- Electrical Tests and Diagnostics
- Wiring Diagram / Schematic
- Ignition and Charging
- Steering
- Brakes
- Wheels
- Operator's Platform
- Body Panels
- Disassembly and Assembly
- Diagnostics, Tests and Adjustments
- Troubleshooting
- and much more...

Please note this manual is in **downloadable PDF format only**. If you have any questions about this product or would like to request sample pages, please contact us and reference the product name or SKU.

Control Valve Disassemble and Assemble—Skid Steer Loader (Hand Control Models S.N. —111091; Foot Control Models S.N. —113348)



T199865

Control Valve

LEGEND:

- 1 System Relief Valve
- 2 O-Ring (3 used)
- 3 Boom Down Circuit Relief and Anticavitation Valve



Thank you very much
for your reading.
Please click here
to get more information.