

# John Deere Tractors 5085E, 5095E and 5100E Service Repair Technical Manual (TM128319)



**Covers:** 5085E,5095E,5100E

**Type:** Service Manual

**Language:** English

**Pages:** 1030

**Format:** PDF

**Features:** Bookmarked, searchable, printable

**Compatibility:** Windows/Mac/Tablet/Mobile

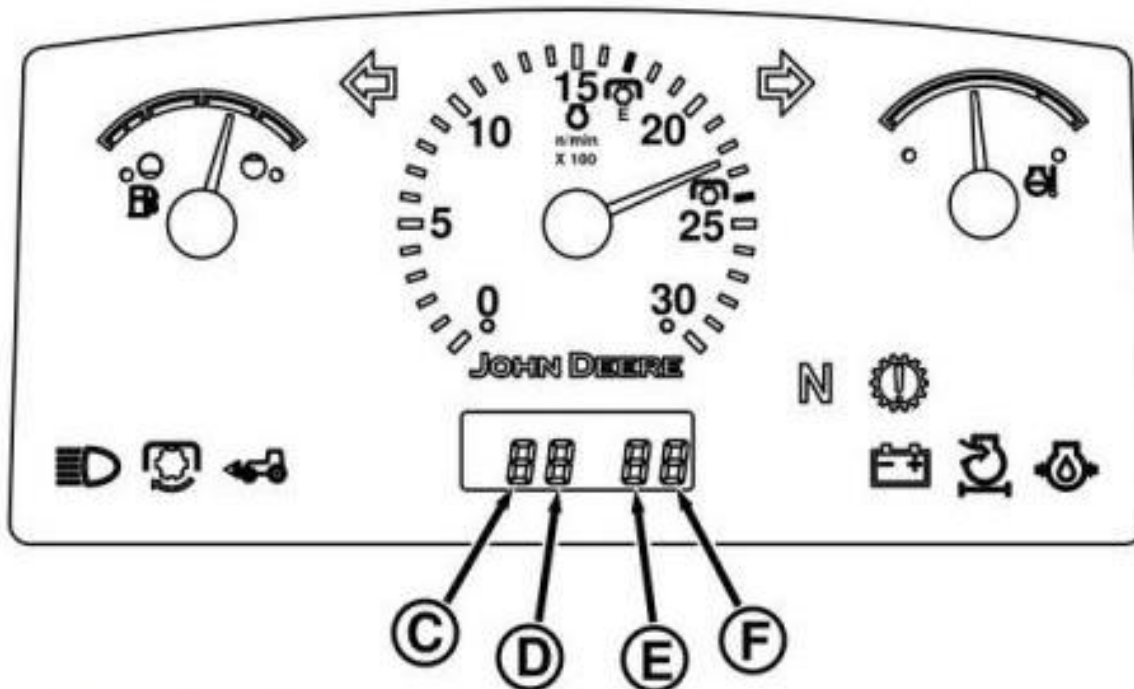
This service manual contains important information for the maintenance, troubleshooting and servicing of the **John Deere Tractors 5085E, 5095E and 5100E Service Repair Technical Manual (TM128319)**

In this manual you will find detailed specifications, illustrations, schematics, diagrams and step-by-step procedures to properly service and diagnose the machine to the manufacturer's standards.

**Contents:**

- General Information
- Specifications
- Serial Number Location
- Engine Specifications
- Engine Diagnostics
- Engine Tests and Adjustments
- Engine Repair
- Power Train
- Transmission
- Axles
- Differential
- PTO
- Hydraulic System
- Electrical System
- Electrical Tests and Diagnostics
- Wiring Diagram / Schematic
- Ignition and Charging
- Steering
- Brakes
- Wheels
- Operator's Platform
- Body Panels
- Disassembly and Assembly
- Diagnostics, Tests and Adjustments
- Troubleshooting
- and much more...

Please note this manual is in **downloadable PDF format only**. If you have any questions about this product or would like to request sample pages, please contact us and reference the product name or SKU.



Instrument Panel Display

**LEGEND:**

- C "Tens" Address Field
- D "Ones" Address Field
- E "Tens" Digit Field
- F "Ones" Digit Field

Place key switch in RUN position. The LCD display should read "00 00". This is the "Access Level One" location. To gain access to the read/write memory, the "Access Level One" code ("11") must be entered into the two data fields (E and F). The address fields (C and D) should be flashing.

- a. Move turn signal switch to the right turn position, and then back to center. The "Ones" digit field (F) should be flashing.
- b. Move turn signal switch to the left turn position, and then back to center one time to increment the "Ones" digit field to the value of "1". If the value of "1" is passed, repeat cycling the turn signal switch to the left turn position and center until the display cycles back to "1".
- c. Move turn signal switch to the right turn position, and back to center. The "Tens" digit field (E) should be flashing.
- d. Move turn signal switch to the left turn position, and then back to center one time to increment the "Ones" digit field to the value of "1".
- e. Move turn signal switch to the right turn position. The address fields (C and D) should be flashing.
- f. Move turn signal switch to the left turn position, and then back to center. If the "Access Level One" value was not correct, the address field will default back to the "00" address. If the value was correct, the address will increment to the "Ground Speed Units" level ("01").



Thank you very much  
for your reading.  
Please click here  
to get more information.