

# John Deere Tractors 5220, 5320, 5420 & 5520 Diagnostic and Tests Service Manual (TM2049)

## 9780 CTS Combines Diagnostic and Repair

### TECHNICAL MANUAL

Combines XXXXXX - 072799 models 9780CTS

TM4635 31.OCT.2002 (ENGLISH)

For complete service information also see:

614R, 615R, 618R, 620R, 622R, 625R, 630R Cutting Platform (Repair)	TM4777
9780 CTS Combines Diagnostic (European Version)	TM4713
925D (705701-), 930D (705851-), 936D (705951-) Draper Platforms - Diagnostic	TM2174
900P Belt Pickup (705101-) - Diagnosis and Test	TM2170
90 Series Corn H Diagnostic	
600 F&R Series Cutting Diagnostic	
600 Series Flex and Rigid Repair	TM2165
GreenStar Mapping and Monitoring Repair	TM1835
GreenStar 00 & 10 Series Combine Yield Monitor & Mapping System	TM1728
PowerTech 8.1 L Diesel Engines Base Engine	CTM86
Alternators and Starting Motors	CTM77
Electronic Fuel Injection Systems	CTM68

PDF



DOWNLOAD



John Deere Agriculture

Covers: 5220,5320,5420,5520

**Type:** Service Manual

**Language:** English

**Pages:** 1787

**Format:** PDF

**Features:** Bookmarked, searchable, printable

**Compatibility:** Windows/Mac/Tablet/Mobile

This service manual contains important information for the maintenance, troubleshooting and servicing of the **John Deere Tractors 5220, 5320, 5420 & 5520 Diagnostic and Tests Service Manual (TM2049)**

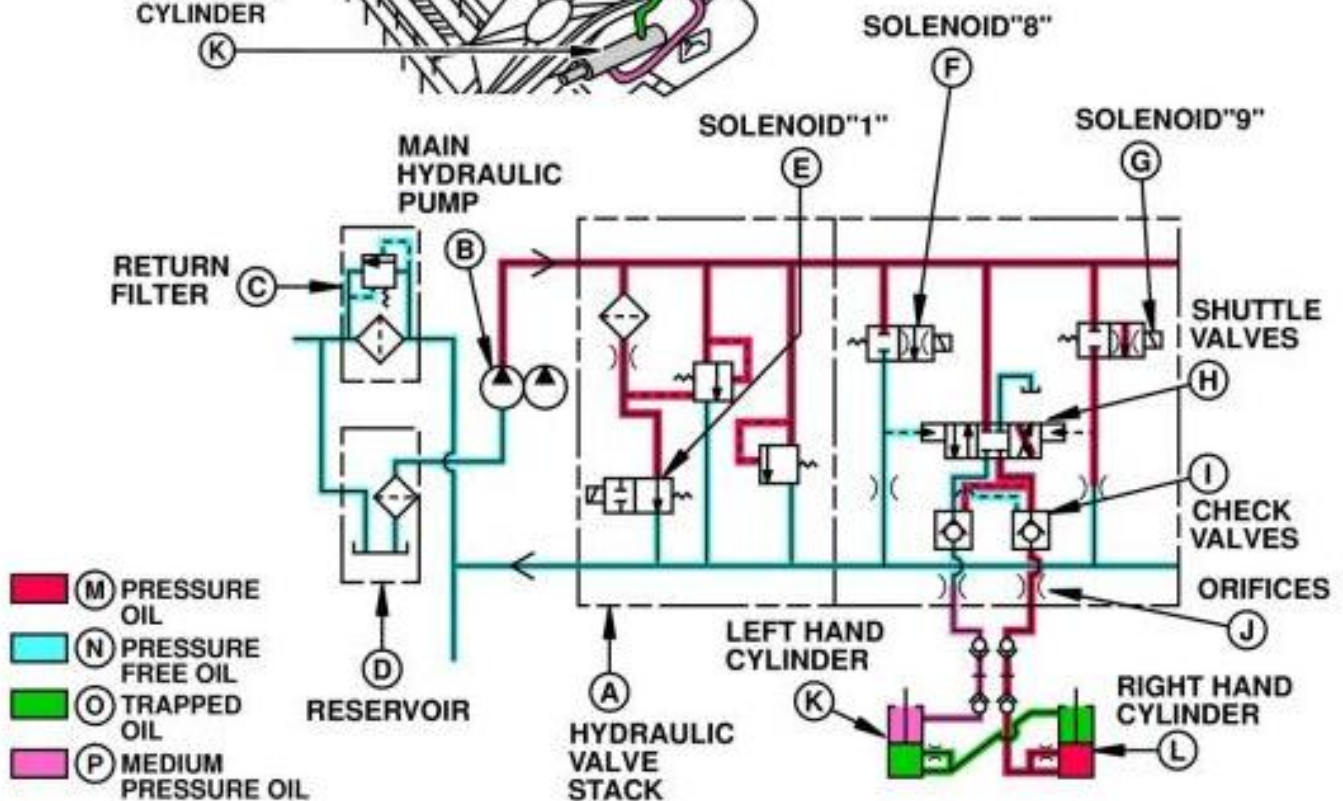
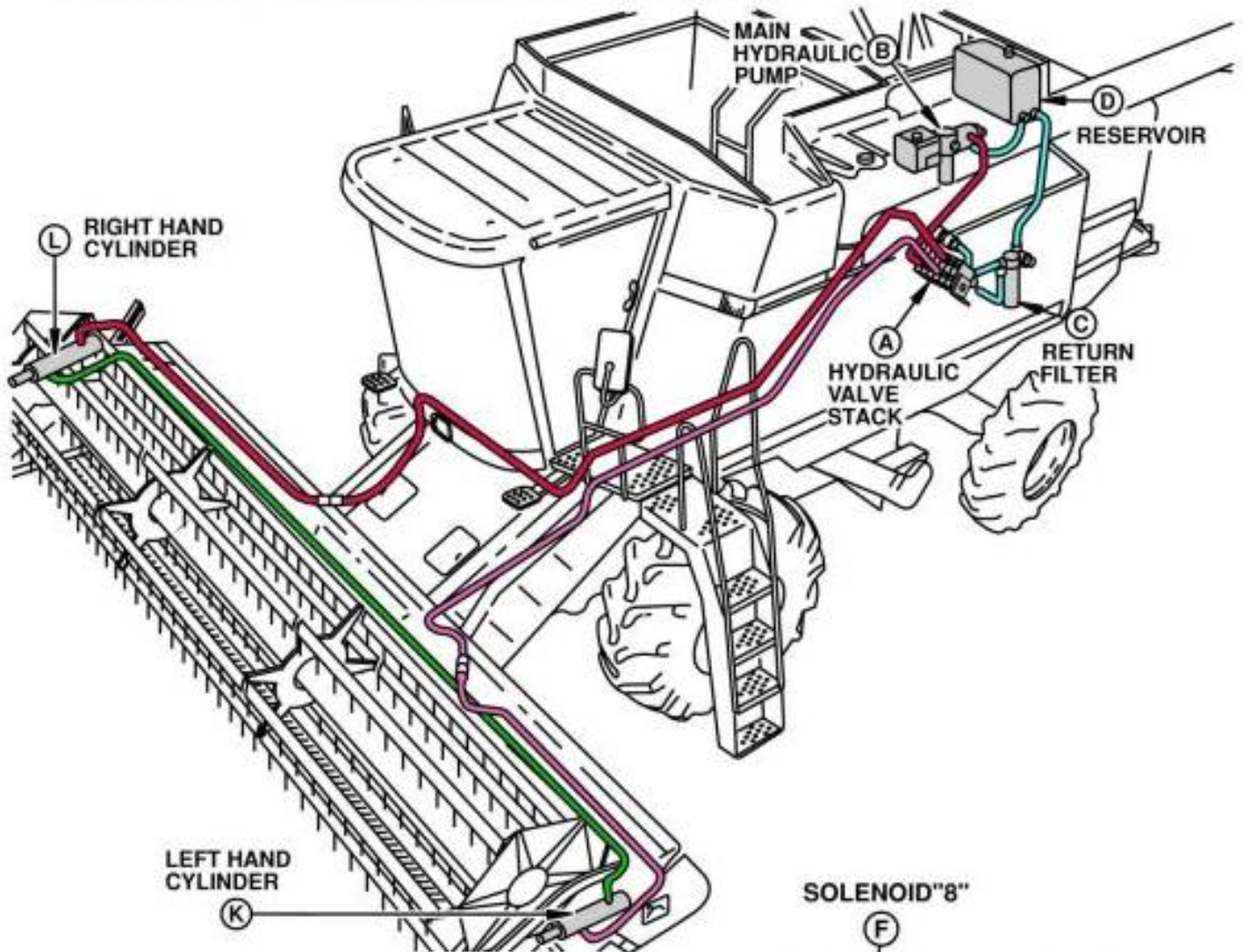
In this manual you will find detailed specifications, illustrations, schematics, diagrams and step-by-step procedures to properly service and diagnose the machine to the manufacturer's standards.

**Contents:**

- General Information
- Specifications
- Serial Number Location
- Engine Specifications
- Engine Diagnostics
- Engine Tests and Adjustments
- Engine Repair
- Power Train
- Transmission
- Axles
- Differential
- PTO
- Hydraulic System
- Electrical System
- Electrical Tests and Diagnostics
- Wiring Diagram / Schematic
- Ignition and Charging
- Steering
- Brakes
- Wheels
- Operator's Platform
- Body Panels
- Disassembly and Assembly
- Diagnostics, Tests and Adjustments
- Troubleshooting
- and much more...

Please note this manual is in **downloadable PDF format only**. If you have any questions about this product or would like to request sample pages, please contact us and reference the product name or SKU.

# Reel Fore/Aft Operation-Reel Moving Forward



HXC49499

**LEGEND:**

- A Hydraulic Valve Stack
- B Main Hydraulic Pump



Thank you very much  
for your reading.  
Please click here  
to get more information.