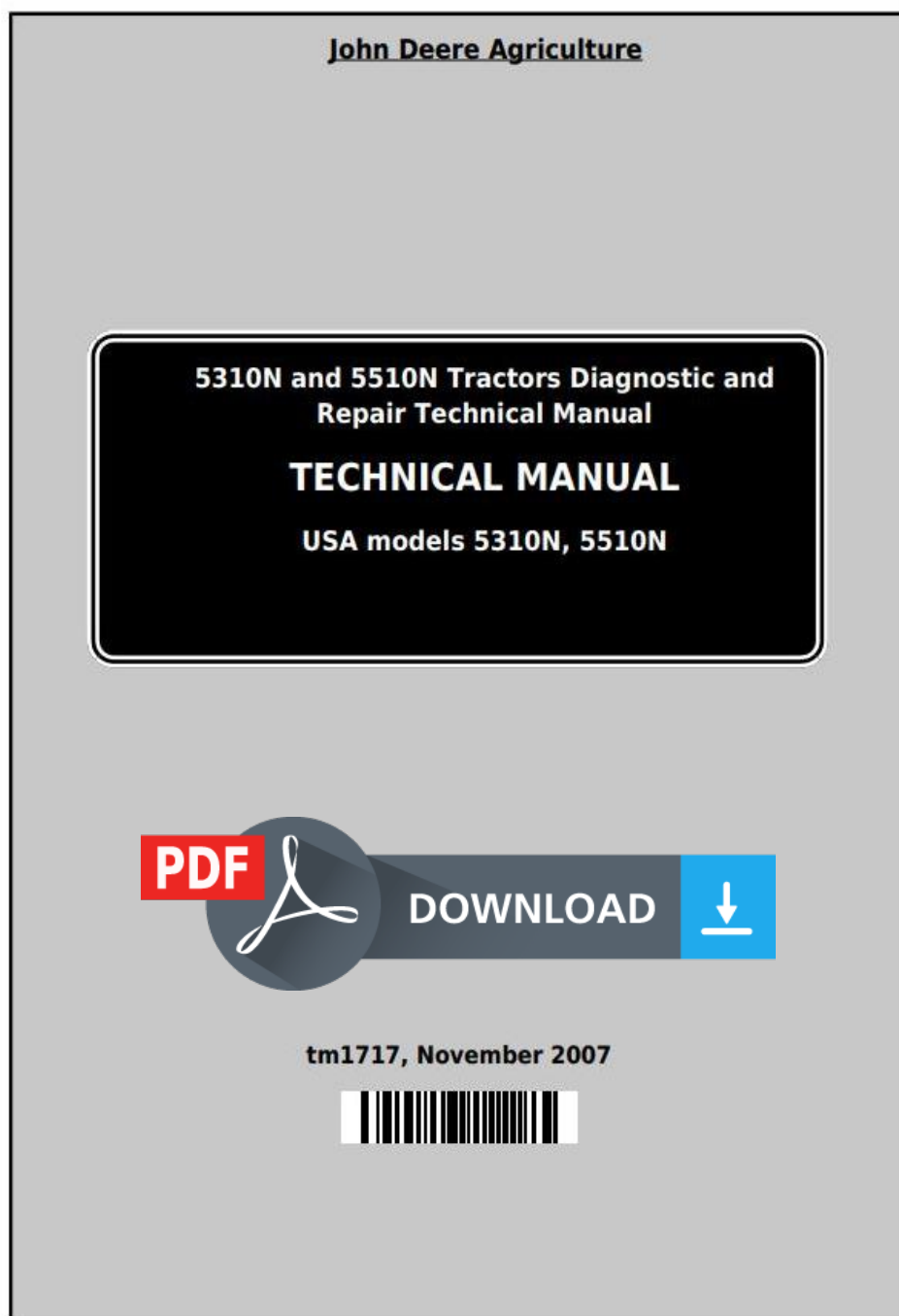


John Deere Tractors 5310N, 5510N (North America) All Inclusive Technical Service Manual (tm1717)



Covers: 5310N,5510N

Type: Service Manual

Language: English

Pages: 1377

Format: PDF

Features: Bookmarked, searchable, printable

Compatibility: Windows/Mac/Tablet/Mobile

This service manual contains important information for the maintenance, troubleshooting and servicing of the **John Deere Tractors 5310N, 5510N (North America) All Inclusive Technical Service Manual (tm1717)**

In this manual you will find detailed specifications, illustrations, schematics, diagrams and step-by-step procedures to properly service and diagnose the machine to the manufacturer's standards.

Contents:

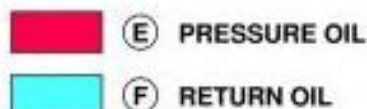
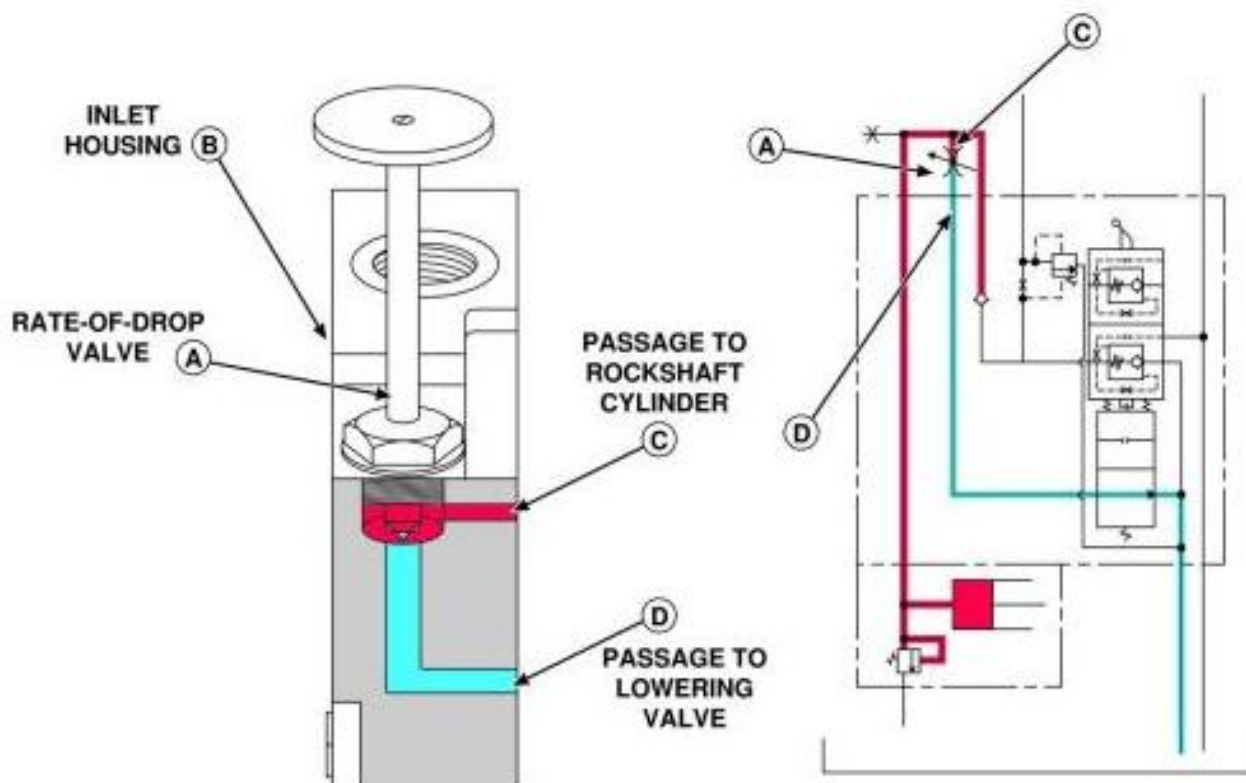
- General Information
- Specifications
- Serial Number Location
- Engine Specifications
- Engine Diagnostics
- Engine Tests and Adjustments
- Engine Repair
- Power Train
- Transmission
- Axles
- Differential
- PTO
- Hydraulic System
- Electrical System
- Electrical Tests and Diagnostics
- Wiring Diagram / Schematic
- Ignition and Charging
- Steering
- Brakes
- Wheels
- Operator's Platform
- Body Panels
- Disassembly and Assembly
- Diagnostics, Tests and Adjustments
- Troubleshooting
- and much more...

Please note this manual is in **downloadable PDF format only**. If you have any questions about this product or would like to request sample pages, please contact us and reference the product name or SKU.

THEORY OF OPERATION:

Rate-of-drop valve (A) acts as a variable orifice for oil flow through the lowering valve. With valve in the fully open position, oil travels through valve opening from passage to rockshaft cylinder (C) to passage to lowering valve (D). Oil continues to flow back to sump through lowering valve. Rockshaft drops quickly due to large volume of oil returning to sump.

Rate-of-Drop Valve Operation-Partially Open



LVC167AE

RATE-OF-DROP VALVE OPERATION — PARTIALLY OPEN

LEGEND:

- A Rate-of-Drop Valve
- B Inlet Housing
- C Passage to Rockshaft Cylinder
- D Passage to Lowering Valve
- E Pressure Oil
- F Return Oil

FUNCTION:



Thank you very much
for your reading.
Please click here
to get more information.