


John Deere Tractors 5415, 5615 and 5715 Diagnostic and Tests Service Manual (TM606819)

524K 4WD Loader (SN.
F670308-677548) Repair




REPAIR TECHNICAL MANUAL

4WD Loaders models 524K (PIN: 1DW524K*F670308-677548)**


TM13368X19 22 FEB 16 (ENGLISH)

For complete service information also see:

524K 4WD Loader (SN. F670308-677548) Diagnostic	TM13362X19
JDLINK (MTG) Technical Manual	TM114519
TM1V1200 - 1400 Series Inboard Planetary Axles	CTM442
120 Series Hydraulic Cylinders	CTM120519
PowerTech 6068 (Stage IV platform) Level 33 ECU	CTM120019



DOWNLOAD



John Deere Construction and Forestry
Printed by Belgreen



TM13368X19

Covers: 5415,5615,5715

Type: Service Manual

Language: English

Pages: 422

Format: PDF

Features: Bookmarked, searchable, printable

Compatibility: Windows/Mac/Tablet/Mobile

This service manual contains important information for the maintenance, troubleshooting and servicing of the **John Deere Tractors 5415, 5615 and 5715 Diagnostic and Tests Service Manual (TM606819)**

In this manual you will find detailed specifications, illustrations, schematics, diagrams and step-by-step procedures to properly service and diagnose the machine to the manufacturer's standards.

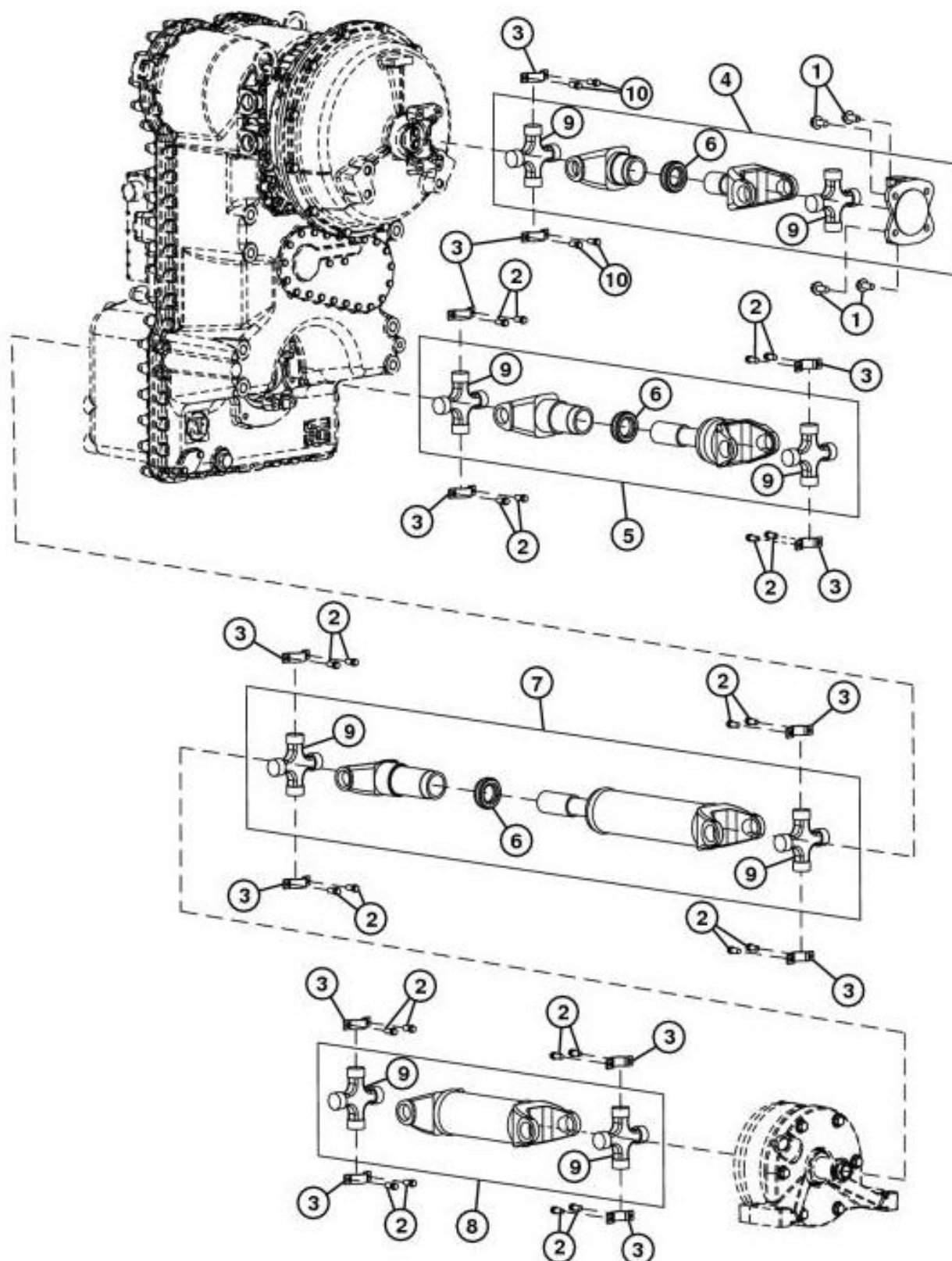
Contents:

- General Information
- Specifications
- Serial Number Location
- Engine Specifications
- Engine Diagnostics
- Engine Tests and Adjustments
- Engine Repair
- Power Train
- Transmission
- Axles
- Differential
- PTO
- Hydraulic System
- Electrical System
- Electrical Tests and Diagnostics
- Wiring Diagram / Schematic
- Ignition and Charging
- Steering
- Brakes
- Wheels
- Operator's Platform
- Body Panels
- Disassembly and Assembly
- Diagnostics, Tests and Adjustments
- Troubleshooting
- and much more...

Please note this manual is in **downloadable PDF format only**. If you have any questions about this product or would like to request sample pages, please contact us and reference the product name or SKU.

Group 0225 - Input Drive Shafts and U-joints

Universal Joint and Drive Shaft Remove and Install



TX1199843

Universal Joint and Drive Shaft Remove and Install

LEGEND:

- 1 Engine Drive Shaft-to-Engine Cap Screw (4 used)
- 2 Drive Shaft Universal Joint Cap Screw (24 used)



Thank you very much
for your reading.
Please click here
to get more information.