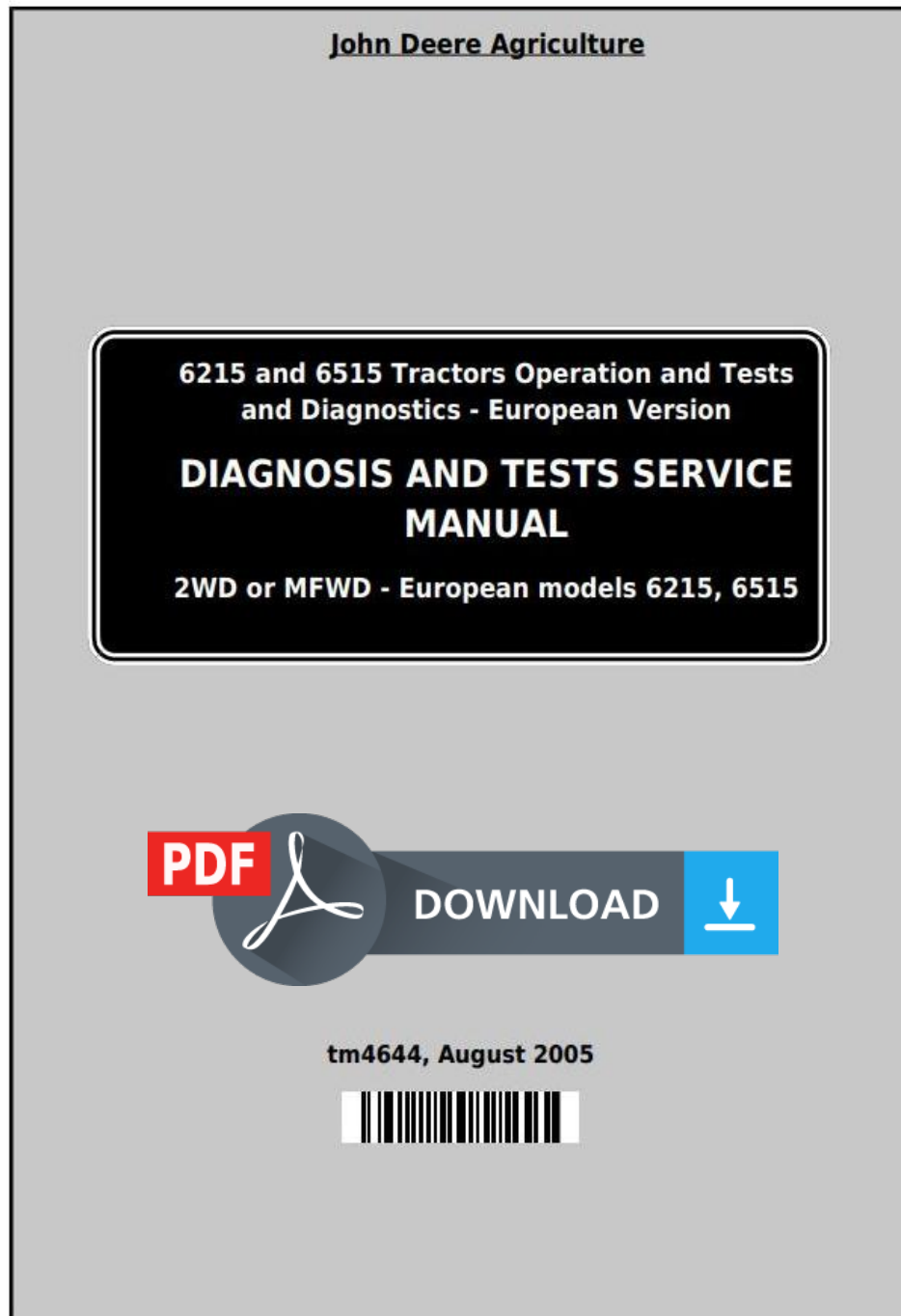


John Deere Tractors 6215 and 6515 (European) Diagnostic and Tests Service Manual (tm4644)



Covers: 6515,6215

Type: Service Manual

Language: English

Pages: 1049

Format: PDF

Features: Bookmarked, searchable, printable

Compatibility: Windows/Mac/Tablet/Mobile

This service manual contains important information for the maintenance, troubleshooting and servicing of the **John Deere Tractors 6215 and 6515 (European) Diagnostic and Tests Service Manual (tm4644)**

In this manual you will find detailed specifications, illustrations, schematics, diagrams and step-by-step procedures to properly service and diagnose the machine to the manufacturer's standards.

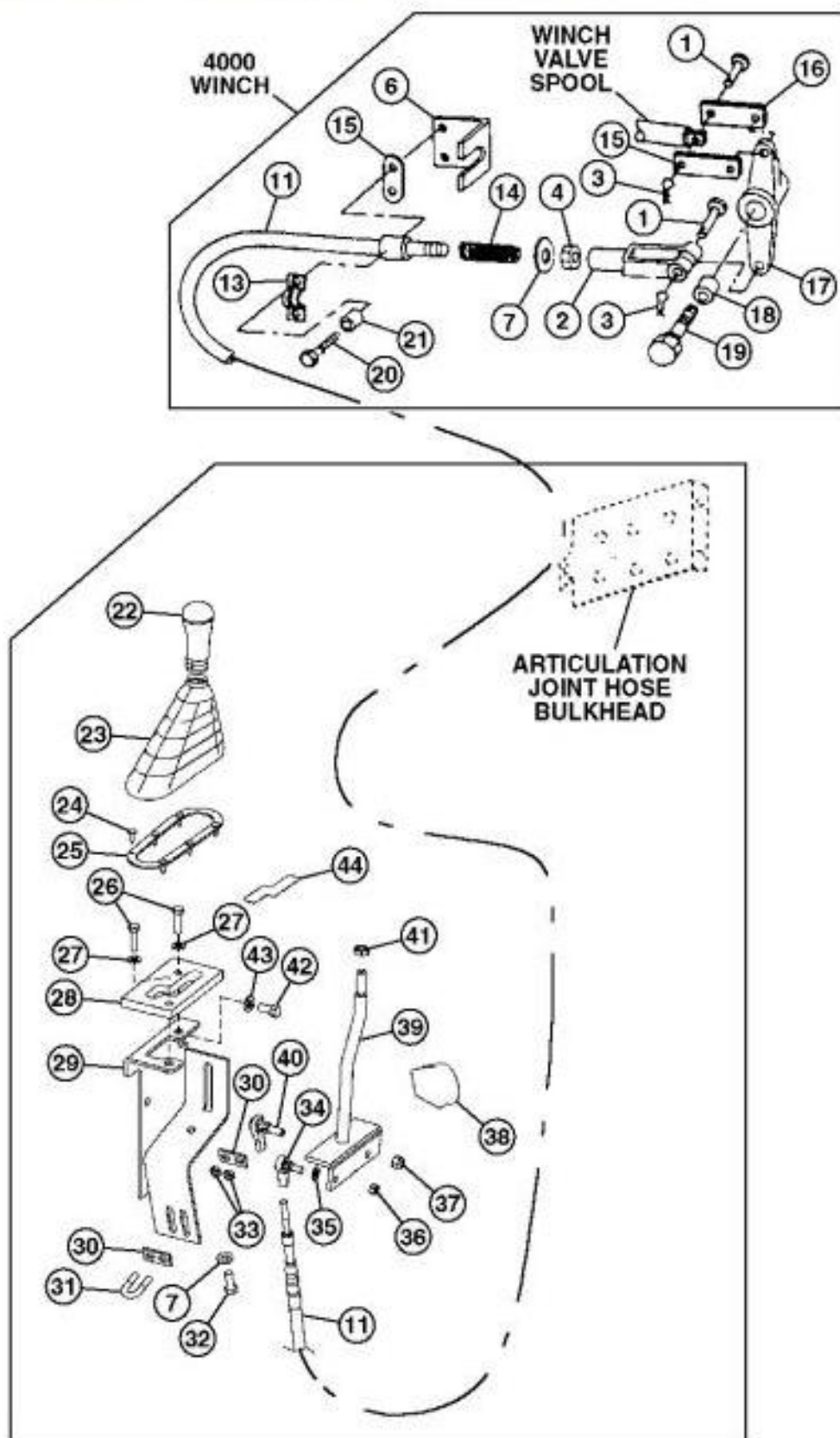
Contents:

- General Information
- Specifications
- Serial Number Location
- Engine Specifications
- Engine Diagnostics
- Engine Tests and Adjustments
- Engine Repair
- Power Train
- Transmission
- Axles
- Differential
- PTO
- Hydraulic System
- Electrical System
- Electrical Tests and Diagnostics
- Wiring Diagram / Schematic
- Ignition and Charging
- Steering
- Brakes
- Wheels
- Operator's Platform
- Body Panels
- Disassembly and Assembly
- Diagnostics, Tests and Adjustments
- Troubleshooting
- and much more...

Please note this manual is in **downloadable PDF format only**. If you have any questions about this product or would like to request sample pages, please contact us and reference the product name or SKU.

Group 3015 - Control Linkage

Winch Control Valve Linkage Remove and Install



TX1065014

Winch Control Valve Linkage

LEGEND:

- | | |
|---|--------------|
| 1 | Pin (3 used) |
| 2 | Yoke |



Thank you very much
for your reading.
Please click here
to get more information.