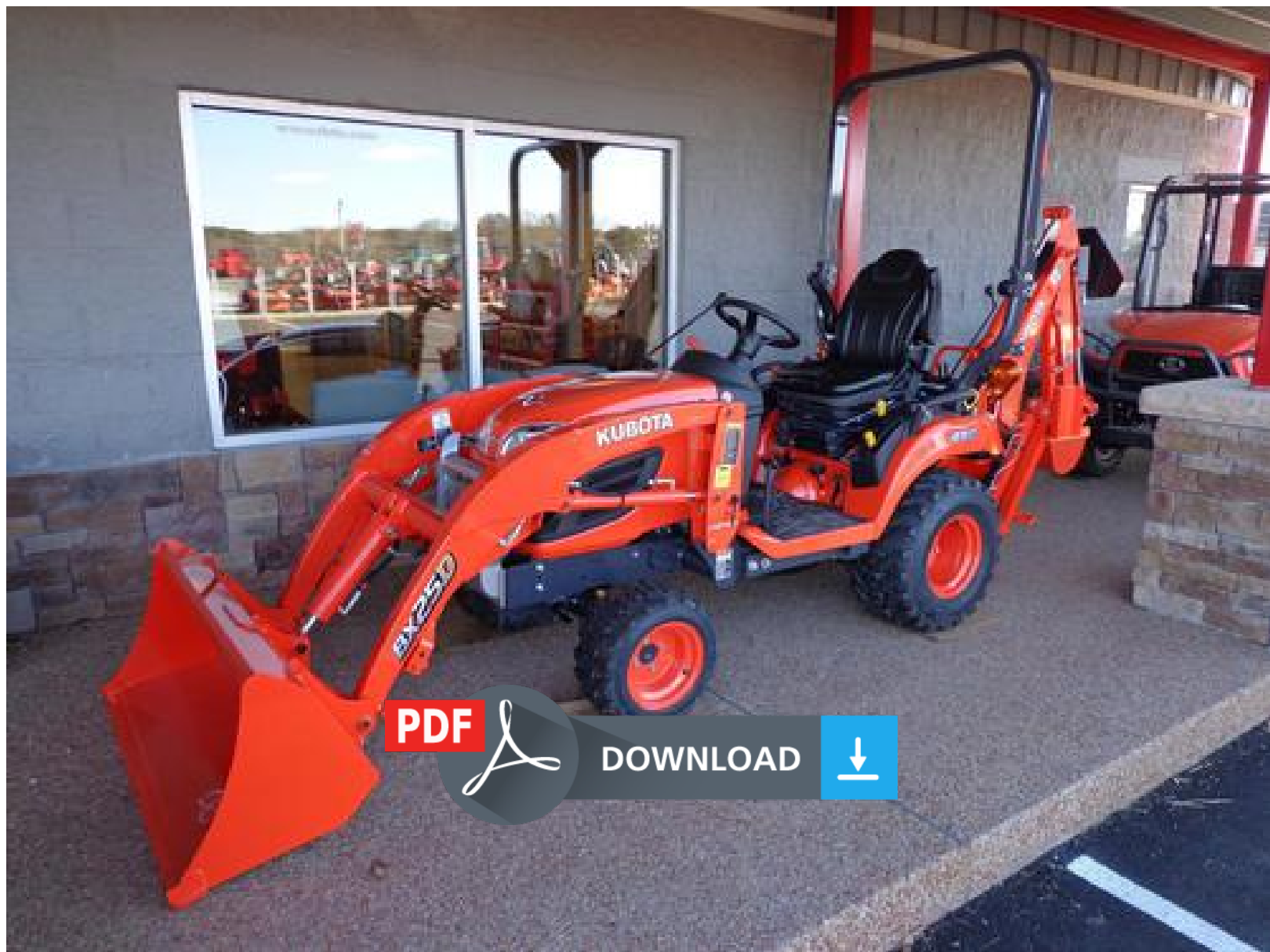


2008 Kubota WSM Modeles BX25D,LA240,BT601 Tractor Service Repair Workshop Manual(French)



2008 Kubota WSM Modeles BX25D,LA240,BT601 Tractor Service Repair Workshop Manual(French)

Instant download 2008 Kubota WSM Modeles BX25D,LA240,BT601 Tractor Service Repair Workshop Manual. This manual content all service, repair, maintenance, troubleshooting procedures for Kubota Machine.

All major topics are covered step-by-step instruction, diagrams, illustration, wiring schematic, and specifications to repair and troubleshoot. With this factory service repair manual on hand can easily help you with any repairs that you may need for your Kubota Machine.

Machine model :

2008 Kubota WSM Modeles BX25D,LA240,BT601 Tractor

Manual Covers:

- *TRACTOR TECHNICAL DATA
- *CHARGER TECHNICAL DATA
- *TECHNICAL DATA OF THE BACKHOE
- *CHARACTERISTICS OF ACCESSORY LIMITATIONS
- *DASHBOARD AND CONTROLS
- *PREOPERATIVE CHECKS OF THE TRACTOR
- *PREOPERATIONAL CHECKS OF THE CHARGER
- *PREOPERATIONAL CHECKS OF THE BACKHOE
- *OPERATION OF THE ENGINE
- *TRACTOR USE
- *PTO (PDF)
- *THREE POINTS HITCH & TENSION BAR
- *HYDRAULIC UNIT
- *TIRES, WHEELS AND COUNTERWEIGHTS
- *USING THE CHARGER
- *OPERATION OF THE BACKHOE
- *TRACTOR MAINTENANCE
- *PERIODIC MAINTENANCE OF THE TRACTOR
- *CHARGER MAINTENANCE
- *MAINTENANCE OF THE BACKHOE
- *STORING THE TRACTOR
- *REMOVING THE CHARGER
- *CHARGER REINSTALLATION
- *REMOVAL OF THE BACKHOE
- *REINSTALLATION OF THE BACKHOE
- *TROUBLESHOOTING
- *OPTIONSSPECIFICATION:

Pages:143

Format: PDF



Thank you very much
for your reading.
Please click here
to get more information.