

PowerTech® 2.9 L Diesel Engines

COMPONENT TECHNICAL MANUAL *POWERTECH* 2.9 L Diesel Engines CTM125 22MAR06 (ANGLAIS)

For complete service information also see:

OEM Engine Accessories CTM67 (English)
Alternators and Starter Motors CTM77 (English)




Introduction

Foreword

This manual is written for an experienced technician. Essential tools required in performing certain service work are identified in this manual and are recommended for use.

Live with safety: Read the safety messages in the introduction of this manual and the cautions presented throughout the text of the manual.

 This is the safety-alert symbol. When you see this symbol on the machine or in this manual, be alert to the potential for personal injury.

Use this component technical manual in conjunction with the machine technical manual. An application listing in the introduction identifies product-model/component type-model relationship. See the machine technical manual for information on component removal and installation, and gaining access to the components.

This manual is divided in three parts: repair, operation and tests, tools and specifications. Repair sections contain necessary instructions to repair the component. Operation and tests sections help you

identify the majority of routine failures quickly. Tools and specifications sections are summary listings of all applicable essential tools, service equipment and tools, other materials needed to do the job, service parts kits, specifications, wear tolerances, and torque values

Information is organized in groups for the various components requiring service instruction.

Component Technical Manuals are concise service guides for specific components. Component technical manuals are written as stand-alone manuals covering multiple machine applications.

Fundamental service information is available from other sources covering basic theory of operation, fundamentals of troubleshooting, general maintenance, and basic type of failures and their causes.

Read each block of material completely before performing service to check for differences in procedures or specifications. Follow only the procedures that apply to the engine model number you are working on. If only one procedure is given, that procedure applies to all the engines in the manual.

CALIFORNIA PROPOSITION 65 WARNING

Diesel engine exhaust and some of its constituents are known to the State of California to cause cancer, birth defects and other reproductive harm.

CD03523,00000DB -19-03JAN01-1/1

John Deere Dealers

The changes listed below make your CTM obsolete. **Discard CTM125 dated 18NOV04 and replace with this new manual.** Also, copy these pages and route through your Service Department.

INTRODUCTION

- Updated engine application charts and pictures.

GROUP 01

- Updated engine model designation.
- Updated engine oil and coolant application guidelines.

GROUP 03

- Updated sealant application guidelines.
- Updated engine break-in procedure.

GROUP 40

- Revised procedure to remove RSN injectors.

GROUP 200

- All essential tools listed throughout this manual are consolidated in this group for ease of reference.

GROUP 205

- All service equipment and recommended tools listed throughout this manual are consolidated in this group for ease of reference.

GROUP 210

- All dealer fabricated tools listed throughout this manual are consolidated in this group for ease of reference.

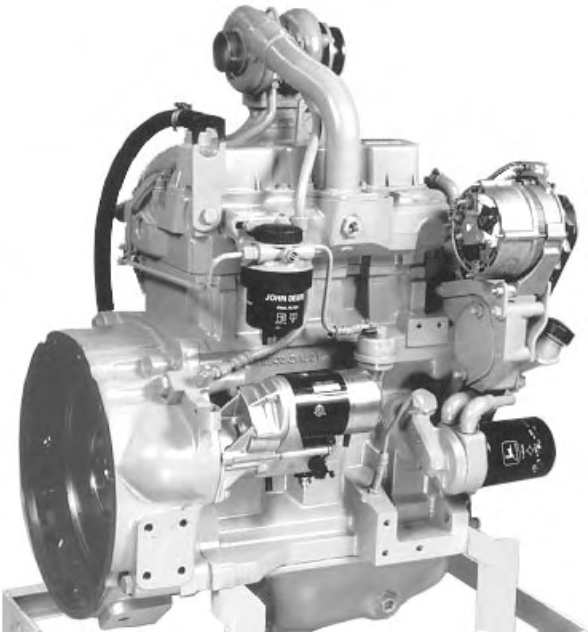
GROUP 300

- All repair specifications listed throughout this manual are consolidated in this group for ease of reference.

GROUP 305

- All test and diagnostic specifications listed throughout this manual are consolidated in this group for ease of reference.

POWERTECH® 2.9 L Engines



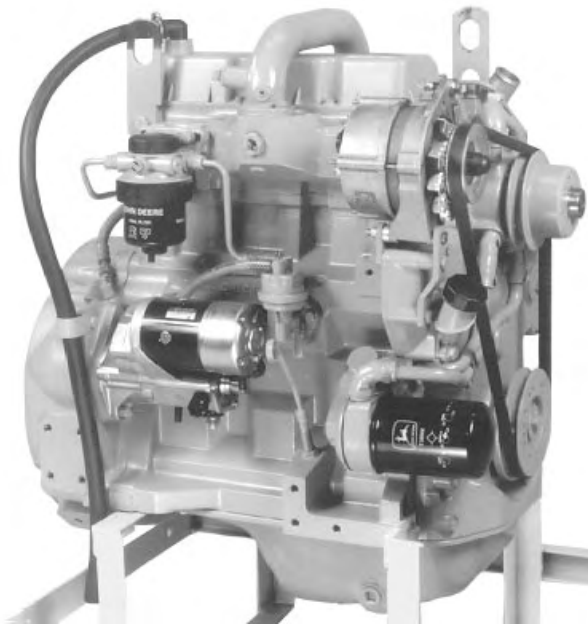
3/4 Right Rear View

CD30517A -UN-23FEB01



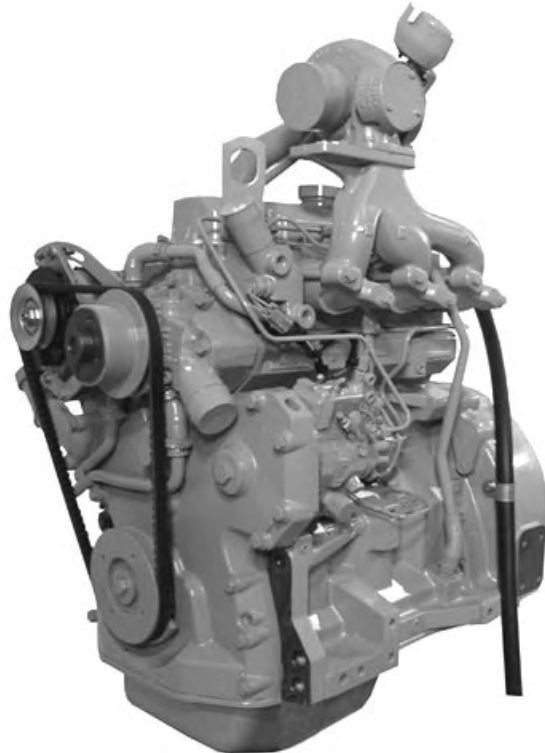
3/4 Left Rear View

CD30518A -UN-22FEB01



3/4 Right front View

CD30519A -UN-23FEB01



3/4 Left Front View

RG12835 -UN-05MAR03

Engine application chart

This component technical manual (CTM125) covers repair of *POWERTECH*[®] 2.9 L engines produced by John Deere SARAN “CD” (France), John Deere TORREON “PE” (Mexico) and by L & T - John Deere “PY” (Pune-India). Refer to the chart below to know which applications is covered by this manual.

NOTE: Information on how to remove and reinstall the engine in the vehicle is contained in the relevant Technical Manual.

5000-SERIES TRACTORS

| (Agritalia-built) | ENGINE MODEL | OBSERVATIONS |
|-----------------------------------|--------------|--------------------|
| 5300/5300N | CD3029DAT01 | Non-Certified |
| 5400/5400N | CD3029TAT02 | Non-Certified |
| (India-built) | | |
| 5003E | PY3029DPY03 | Certified (Trem 3) |
| 5103 | PY3029DPY03 | Certified (Trem 3) |
| 5103 Super | PY3029DPY04 | Certified (Trem 3) |
| 5103 (Export-U.S.) | PE3029DPY06 | Certified (Tier 1) |
| 5103 (Export-U.S.) | PY3029DPY12 | Certified (Tier 1) |
| 5103 (Export-U.S.) | PY3029TPY23 | Certified (Tier 2) |
| 5103 (Export-Australia) | PY3029DPY12 | Certified (Tier 1) |
| 5203 | PY3029DPY02 | Certified (Trem 3) |
| 5203 Super | PY3029DPY08 | Certified (Trem 3) |
| 5203 (Export-U.S.) | PE3029DPY05 | Certified (Tier 1) |
| 5203 (Export-U.S.) | PY3029DPY13 | Certified (Tier 1) |
| 5203 (Export-U.S.) | PY3029TPY21 | Certified (Tier 2) |
| 5303 (Export-Mexico) | PY3029DPY07 | Certified (Trem 3) |
| 5303 (Export-Turkey) | PY3029DPY05 | Certified (Tier 1) |
| 5303 (Export-U.S.) | PY3029TPY11 | Certified (Tier 1) |
| 5303 (Export-U.S.) | PE3029TLV52 | Certified (Tier 1) |
| 5303 (Export-U.S.) | PY3029TPY22 | Certified (Tier 2) |
| 5303 (Export-North Africa) | PY3029DPY07 | Certified (Trem 3) |
| 5303 (Export-South Africa) | PY3029DPY07 | Certified (Trem 3) |
| 5403 (Export-Turkey) | PY3029TPY02 | Certified (Tier 1) |
| 5403 (Export-U.S.) | PY3029TPY24 | Certified (Tier 2) |
| 5403 (Export-South Africa.) | PY3029TPY04 | Certified (Trem 3) |

5010-SERIES TRACTORS

| (Agritalia-built) | ENGINE MODEL | OBSERVATIONS |
|---------------------------|--------------|--------------------|
| 5310/5310N | CD3029DAT50 | Certified (Tier 1) |
| 5410/5410N | CD3029TAT50 | Certified (Tier 1) |
| (India-built) | | |
| 5310 | PY3029DPY01 | Certified (Trem 3) |
| 5310S | PY3029TPY03 | Certified (Tier 1) |
| 5410 (Export-China) | PY3029TPY01 | Certified (Trem 3) |
| (Augusta-built) | | |



Thank you very much
for your reading.
Please click here
to get more information.