

# John Deere 450G, 550G, 650G Crawler Dozer; 455G, 555G Loader Service Repair Technical Manual (tm1404)

## 450G, 455G, 550G, 555G, 650G Crawler Repair

### REPAIR TECHNICAL MANUAL

Dozer models 450G, 550G, 650G; Loader models 455G, 555G

TM1404 22 FEB 05 (ENGLISH)

For complete service information also see:

450G, 455G, 550G 555G, 650G Crawler Diagnostic TM1403

Alternators and Starting Motors CTM77

PowerTech 4.5L & 6.8L Diesel Engines Tier 1/Stage I, Tier 2/Stage II, Tier 3/Stage IIIA, Tier 3/Stage IIA Tier 3/Stage III, (Base Engine) CTM104

Ultrasonic Undercarriage Measurement Gauge CTM10001



John Deere Construction and Forestry

**Covers:** 450G,455G,550G,555G,650G

**Type:** Service Manual

**Language:** English

**Pages:** 746

**Format:** PDF

**Features:** Bookmarked, searchable, printable

**Compatibility:** Windows/Mac/Tablet/Mobile

This service manual contains important information for the maintenance, troubleshooting and servicing of the **John Deere 450G, 550G, 650G Crawler Dozer; 455G, 555G Loader Service Repair Technical Manual (tm1404)**

In this manual you will find detailed specifications, illustrations, schematics, diagrams and step-by-step procedures to properly service and diagnose the machine to the manufacturer's standards.

**Contents:**

- General Information
- Specifications
- Serial Number Location
- Engine Specifications
- Engine Diagnostics
- Engine Tests and Adjustments
- Engine Repair
- Power Train
- Transmission
- Axles
- Differential
- PTO
- Hydraulic System
- Electrical System
- Electrical Tests and Diagnostics
- Wiring Diagram / Schematic
- Ignition and Charging
- Steering
- Brakes
- Wheels
- Operator's Platform
- Body Panels
- Disassembly and Assembly
- Diagnostics, Tests and Adjustments
- Troubleshooting
- and much more...

Please note this manual is in **downloadable PDF format only**. If you have any questions about this product or would like to request sample pages, please contact us and reference the product name or SKU.

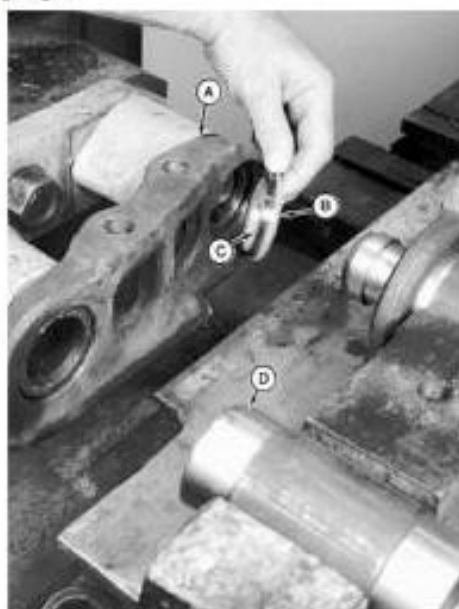


### Plastic Gasket Application

Apply LOCTITE™ plastic gasket to link bore. The sealant prevents loss of vacuum or lubricant leakage through pin to link joint.

Number	Name	Use
<ul style="list-style-type: none"> <li>• T43514 (us)</li> <li>• TY9475 (canadian)</li> <li>• 277 LOCTITE™ (loctite)</li> </ul>	Plastic Gasket	Applied to link bore.

[15] -



#### LEGEND:

A	Link Counterbore
B	Seal Ring
C	Load Ring
D	Bushing

### Counterbore, Bushing, Seal & Load Rings

Install bushing (D) in front saddle seat. Install left link (A) and right link on ram plungers.

Assemble load ring (C) and seal ring (B). Install assembly into link (A) counterbore so pointed lip of seal ring is toward bushing (D).

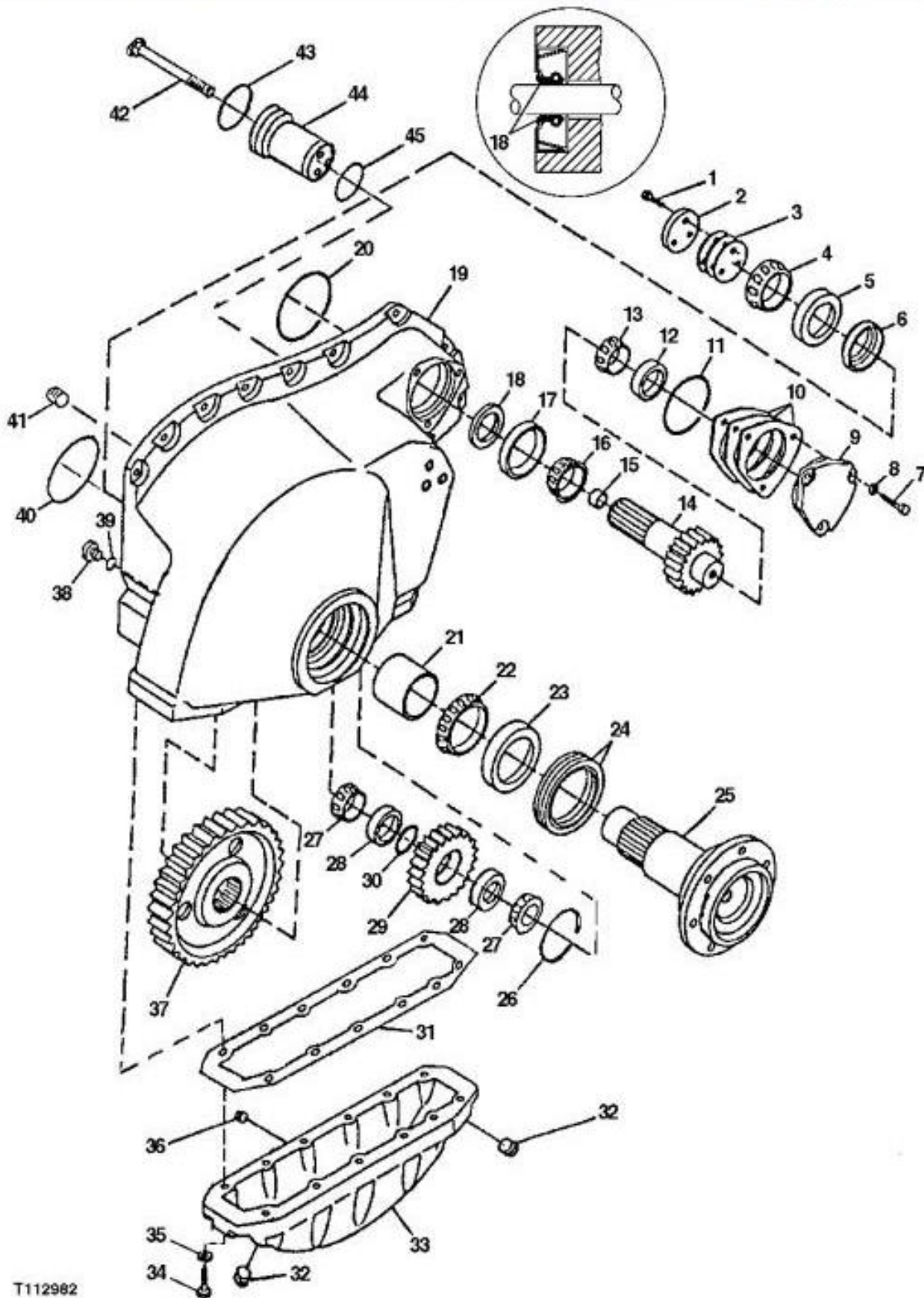
[16] -



#### LEGEND:

A	Left Ram
B	Saddle
C	Pin
D	Plunger
E	Right Ram
F	Right Link
G	Bushing
H	Shims
I	Left Link

### Installing Right and Left Links



T112982

### Single Reduction Final Drive 450G-LT and 450G-LGP

#### LEGEND:

1	Cap Screw (3 used)
2	Retainer
3	Shim (as required)
4	Bearing Cone
5	Bearing Cup



Thank you very much  
for your reading.  
Please click here  
to get more information.