

John Deere 2154G,2154GLC (SN.C212001-,D212001-) Forestry Excavator Repair Service Manual- TM14044X19

2154G and 2154GLC Forestry Excavator Repair

(PIN: 1FF2154G__C212001—;
PIN: 1FF2154G__D212001—)



JOHN HARE



COLLECTION

REPAIR TECHNICAL MANUAL

2154G and 2154GLC Forestry Excavator (PIN:
1FF2154G__C212001—; PIN: 1FF2154G__
_D212001—)

TM14044X19 01DEC18 (ENGLISH)

For complete service information also see:

2154G and 2154GLC Forestry Excavator Operators
Manual..... QMT361330X19
2154G and 2154GLC F
Test..... 3X19
PowerTech 4.5L & 6.8L
Tier 2/Stage II, Tier 3/ST
Stage III, (Base Engine)

PDF



DOWNLOAD



Worldwide Construction and
Forestry Division

Covers: 2154G,2154GLC,1FF2154G__,C212001;1FF2154G__,D21

Type: Service Manual

Language: English

Pages: 371

Format: PDF

Features: Bookmarked, searchable, printable

Compatibility: Windows/Mac/Tablet/Mobile

This service manual contains important information for the maintenance, troubleshooting and servicing of the **John Deere 2154G,2154GLC (SN.C212001-,D212001-) Forestry Excavator Repair Service Manual-TM14044X19**

In this manual you will find detailed specifications, illustrations, schematics, diagrams and step-by-step procedures to properly service and diagnose the machine to the manufacturer's standards.

Contents:

- General Information
- Specifications
- Serial Number Location
- Engine Specifications
- Engine Diagnostics
- Engine Tests and Adjustments
- Engine Repair
- Power Train
- Transmission
- Axles
- Differential
- PTO
- Hydraulic System
- Electrical System
- Electrical Tests and Diagnostics
- Wiring Diagram / Schematic
- Ignition and Charging
- Steering
- Brakes
- Wheels
- Operator's Platform
- Body Panels
- Disassembly and Assembly
- Diagnostics, Tests and Adjustments
- Troubleshooting
- and much more...

Please note this manual is in **downloadable PDF format only**. If you have any questions about this product or would like to request sample pages, please contact us and reference the product name or SKU.

Manual Identification—READ THIS FIRST!

IMPORTANT:

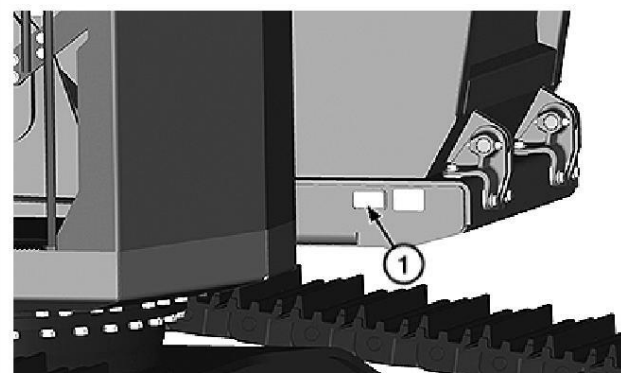
Use only supporting manuals designated for each specific machine. If incorrect manual is chosen, improper service may occur. Verify product identification number (PIN) when choosing the correct manual.

Choosing the Correct Supporting Manuals

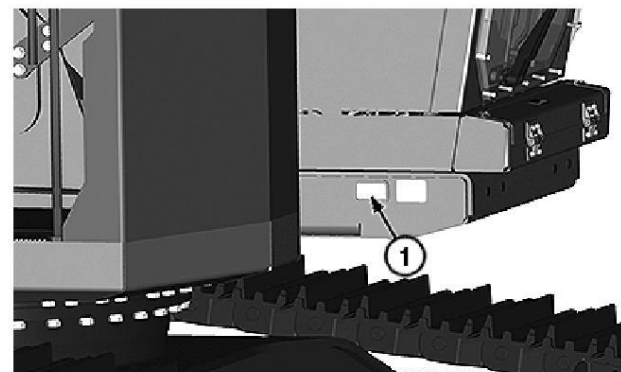
John Deere machines are available in different machine configurations based on the various markets into which they are sold. Different supporting manuals exist for different machine configurations.

When necessary, product identification numbers are listed on the front covers of the manuals. These numbers are used to identify the correct supporting manual for the machine.

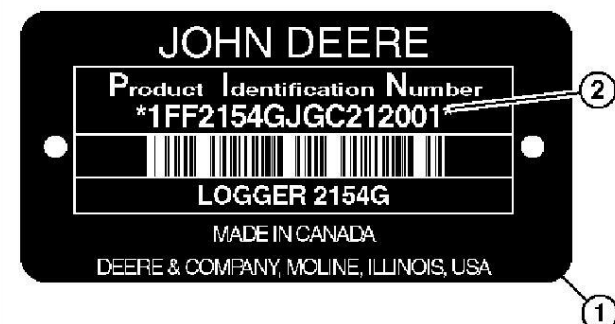
Product Identification Number



TX1213375-UN: PIN Plate Location—Rear Entry Cab



TX1213374-UN: PIN Plate Location—Side Entry Cab



TX1219336-UN: Example of PIN Plate

LEGEND:

1-PIN Plate

2-17-Character PIN

The product identification number (PIN) plate (1) is located on the front right corner of the cab. Each machine has a 17-character PIN (2) shown on PIN plate.

The PIN identifies the producing factory, machine model number, machine option, year of manufacture, engine emission level, and machine serial number.

The following is an example for a machine that meets Tier 2 and Stage II emission levels:

17-Character PIN Examples																
1	2	3	4	5	6	7	8	9	10	11	12	13	14	15	16	17
1	F	F	2	1	5	4	G	_	_	C	2	1	2	0	0	1

(1—3) World Code: Identifies location where machine is manufactured.

1FF..... **World Code**(manufacturing location)

1DW..... Davenport Works

1T8..... Thibodaux Works

1T0..... Dubuque Works

1FF..... Deere—Hitachi (Kemersville, NC, USA)

1F9..... Deere—Hitachi (Indaiatuba, Sao Paulo, Brazil)

(4—8) Machine Model and Series Identifier: Identifies model number and series.

2154G..... **Machine Model and Series Identifier**

(9) Check Letter: This is a random character assigned by the factory. This is not used in machine identification.

..... **Check Letter**(variable)

(10) Manufacturing Year Code: Identifies year of machine manufacture.

..... **Manufacturing Year Code**(variable)

D..... 2013

E..... 2014

F..... 2015

G..... 2016

(11) Engine Emission Code: Represents engine emission certification.

C..... **Engine Emission Code**

C..... Tier 2 and Stage II

D..... Tier 3 and Stage III A

E..... Interim Tier 4 and Stage III B

F..... Final Tier 4 and Stage IV

G..... Interim Tier 4 and Stage III A (19-56 kW)

H..... Final Tier 4 and Stage III A (19-37 kW)

J..... Final Tier 4 and Stage III B (37-56 kW)

K..... Final Tier 4 (8-19 kW)

(12—17) Machine Serial Number: Identifies machine serial number. This character will change from one machine to another.

212001..... **Machine Serial Number**

KR46761,00012BE-19-20160714



Thank you very much
for your reading.
Please click here
to get more information.