

John Deere 655, 755, 756, 855, 856, 955 Compact Utility Tractors Technical Service Manual (tm1360)

**655, 755, 855, 955,
756 and 856 Compact
Utility Tractors**



JOHN DEERE

TECHNICAL MANUAL

655, 755, 855, 955, 756 and 856
Compact
Utility Tractors

TM1360 (01JUN96) English



John Deere
Lawn & Grounds Care Division
TM1360 (01JUN96)

LITHO IN U.S.A.
ENGLISH



Covers: 756,856,655,755,855,955

Type: Service Manual

Language: English

Pages: 1360

Format: PDF

Features: Bookmarked, searchable, printable

Compatibility: Windows/Mac/Tablet/Mobile

This service manual contains important information for the maintenance, troubleshooting and servicing of the **John Deere 655, 755, 756, 855, 856, 955 Compact Utility Tractors Technical Service Manual (tm1360)**

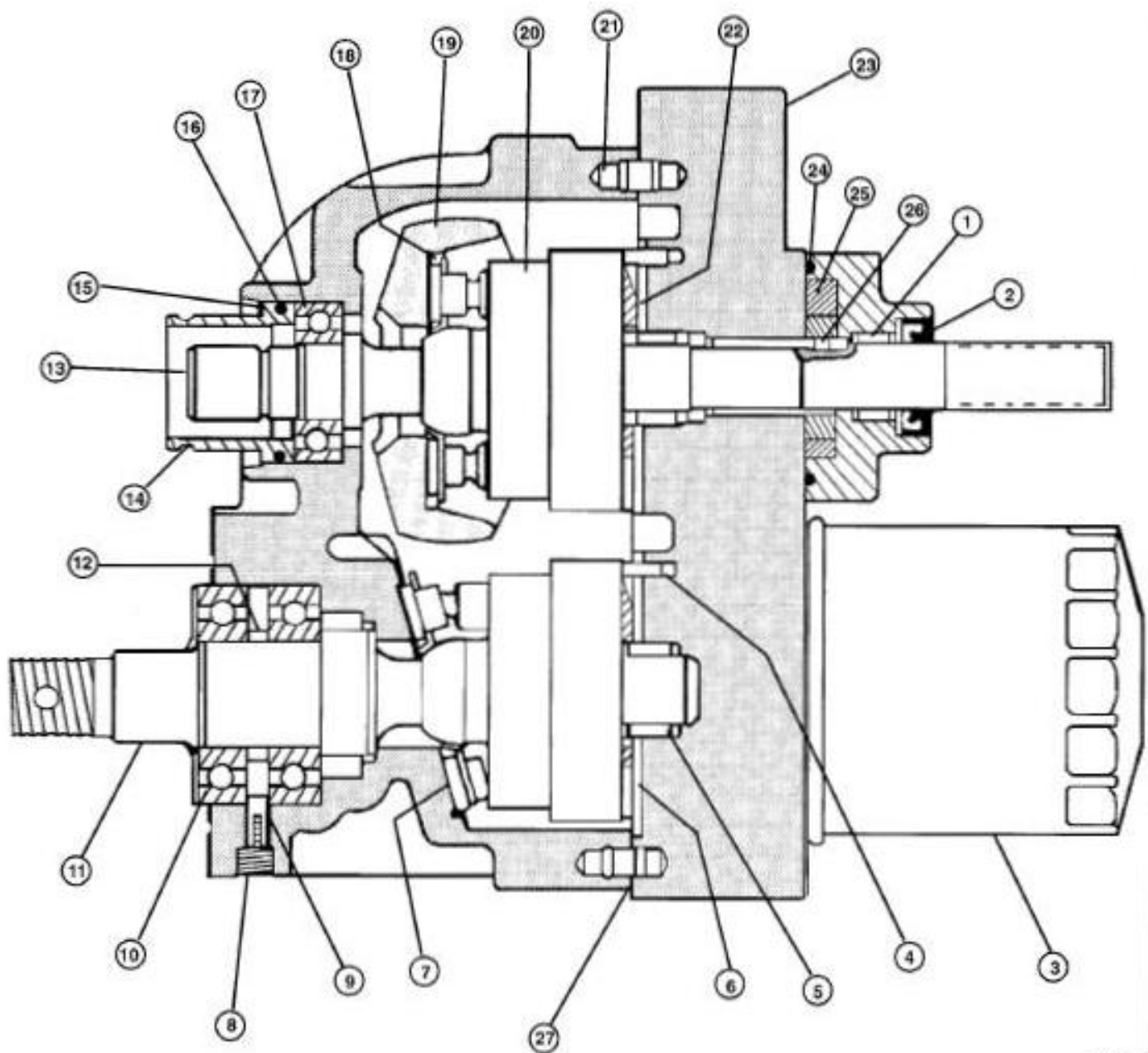
In this manual you will find detailed specifications, illustrations, schematics, diagrams and step-by-step procedures to properly service and diagnose the machine to the manufacturer's standards.

Contents:

- General Information
- Specifications
- Serial Number Location
- Engine Specifications
- Engine Diagnostics
- Engine Tests and Adjustments
- Engine Repair
- Power Train
- Transmission
- Axles
- Differential
- PTO
- Hydraulic System
- Electrical System
- Electrical Tests and Diagnostics
- Wiring Diagram / Schematic
- Ignition and Charging
- Steering
- Brakes
- Wheels
- Operator's Platform
- Body Panels
- Disassembly and Assembly
- Diagnostics, Tests and Adjustments
- Troubleshooting
- and much more...

Please note this manual is in **downloadable PDF format only**. If you have any questions about this product or would like to request sample pages, please contact us and reference the product name or SKU.

CROSS-SECTION VIEW—HYDROSTATIC TRANSMISSION



M85125

- | | | | |
|---|---|---|---------------------------|
| 1—Needle Bearing | 8—Drain Plug | 14—Seal Guide | 21—Pin (2 Used) |
| 2—Seal | 9—Bearing Retaining Pin | 15—Snap Ring | 22—Pump Valve Plate |
| 3—Filter | 10—Ball Bearing (2 Used) | 16—O-Ring | 23—Center Section |
| 4—Pin (2 used) | 11—Late Model Motor Shaft
(Early Models Are Not
Threaded) | 17—Ball Bearing | 24—O-Ring |
| 5—Needle Bearing (2 Used) | 12—Collar | 18—Thrust Plate | 25—Gerotor Charge
Pump |
| 6—Motor Valve Plate | 13—Pump Shaft | 19—Variable Swash Plate | 26—Gerotor Drive Pin |
| 7—Motor Cylinder Block
Assembly With Fixed
Thrust Plate | | 20—Pump Cylinder Block
Assembly (2 Used) | 27—Gasket |



Thank you very much
for your reading.
Please click here
to get more information.