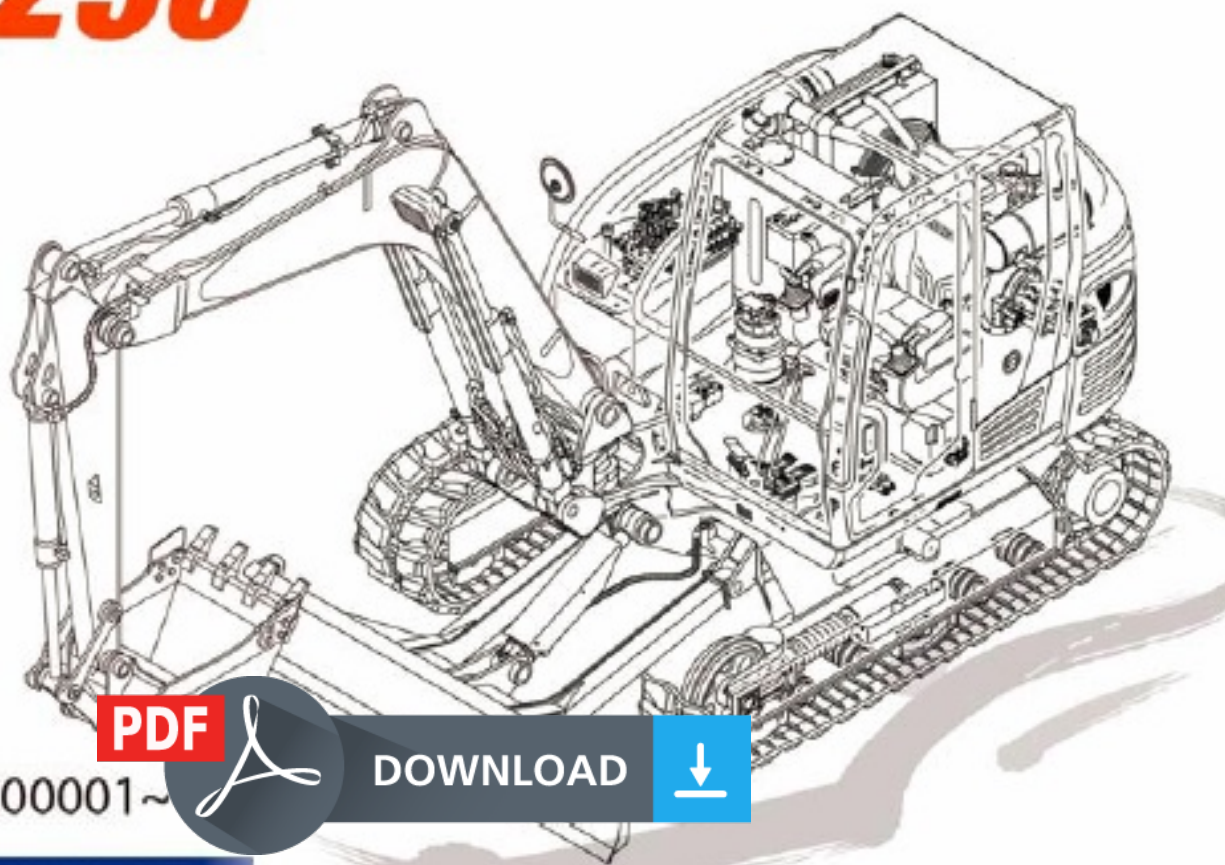


TB290



PDF



DOWNLOAD



Serial No. 190200001~

BM2Z001-1 (P-TB290H-CD)

PREFACE

When it becomes necessary to replace parts on SUZUKI MOTORCYCLES, always use SUZUKI GENUINE PARTS which have passed a strict inspection which guarantees quality and performance.

This parts catalogue covers the list of all service parts for SUZUKI GSF1200K1, GSF1200SK1, GSF1200K2, GSF1200SK2.

INSTRUCTIONS FOR QUOTING THE CATALOGUE

1. DIMENSIONS

Dimensions of the parts in this catalogue are indicated in unit millimeters.

2. ABBREVIATIONS

Abbreviations used in this catalogue are as follows:

AR	: As required	NT	: Number of teeth
ASSY	: Assembly	OPT	: Optional
E. No.	: Engine number	OS	: Over size
F. No.	: Frame number	STD	: Standard
d	: Diameter of material	T	: Thickness
ID	: Inside diameter	US	: Under size
OD	: Outside diameter	W	: Width
L	: Length	P28	: Canada specification
LH	: Left hand side	P3	: Federal specification
RH	: Right hand side		
~100045	: Up to F.No.100045		
100046~	: From F.No.100046		
12 x 34 x 5.6 Figures in the description column		
	show the dimensions of parts.		
ID OD T(or W,L)			

AIR CLEANER.....	C-07	COWLING BODY.....	J-02	FRAME COVER.....	H-03	GASKET SET.....	B-02	OIL COOLER.....	
ALTERNATOR.....	E-03	COWLING INSTALLATIO.....	J-04	FRAME.....	G-02	GEAR SHIFTING.....	D-00	OIL PAN.....	
BATTERY.....	E-06	CRANKCASE COVER.....	B-08	FRONT BRAKE HOSE.....	K-04	HANDLE L'YER.....	H-10	OIL PUMP.....	
CAM CHAIN.....	C-03	CRANKCASE.....	B-06	FRONT CALIPERS.....	K-03	HANDLE SWITCH.....	F-09	OPTIONAL.....	
CAM SHAFT / VALVE.....	C-02	CRANKSHAFT.....	B-11	FRONT DAMPER.....	J-07	HANDLEBAR.....	H-00	REAR CALIP.....	
CANISTER.....	H-02	CYLINDER HEAD COVER.....	B-03	FRONT FENDER.....	H-07	HEADLAMP HOUSING.....	H-06	REAR CUSH.....	
CARBURETOR FITTING.....	C-06	CYLINDER HEAD.....	B-04	FRONT MASTER CYLIND.....	K-05	HEADLAMP.....	F-02	REAR FEND.....	
CARBURETOR.....	C-04	CYLINDER.....	B-05	FRONT WHEEL.....	K-02	LABEL.....	J-06	REAR MAST.....	
CLUTCH MASTER CYLIN.....	K-07	ELECTRICAL.....	E-05	FUEL COCK.....	G-08	MANUAL BOX.....	H-05	REAR SWIN.....	
CLUTCH.....	D-02	FOOTREST.....	G-06	FUEL TANK.....	G-07	MUFFLER.....	C-08	REAR WHEEL.....	

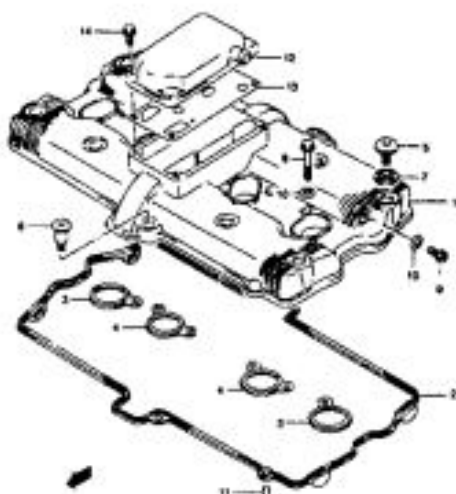
FIG.1



GSF1200BK1 803 E28, 30"
GASKET SET

B 2

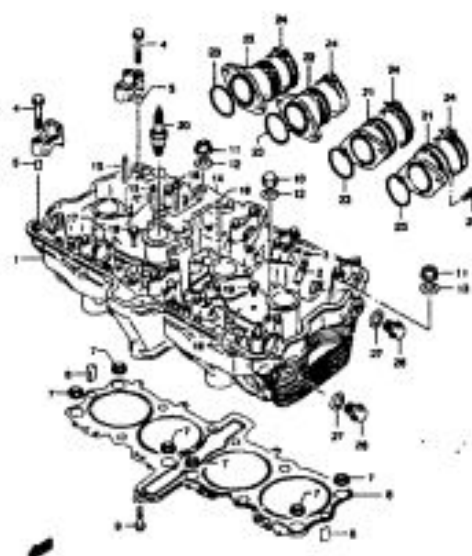
FIG.1A



GSF1200BK1 803 E28, 30"
CYLINDER HEAD COVER

B 3

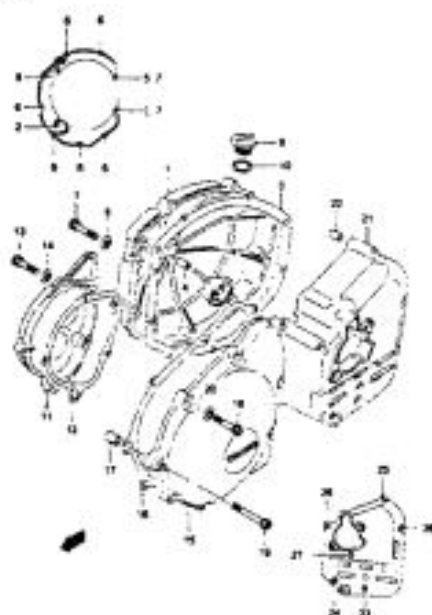
FIG.2



GSF1200BK1 803 E28, 30"
CYLINDER HEAD

B 4

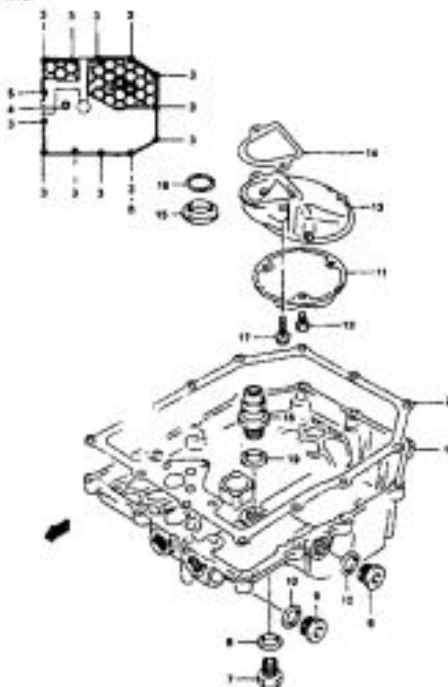
FIG.5



GSF1200BK1 803 E28, 30"
CRANKCASE COVER

B 8

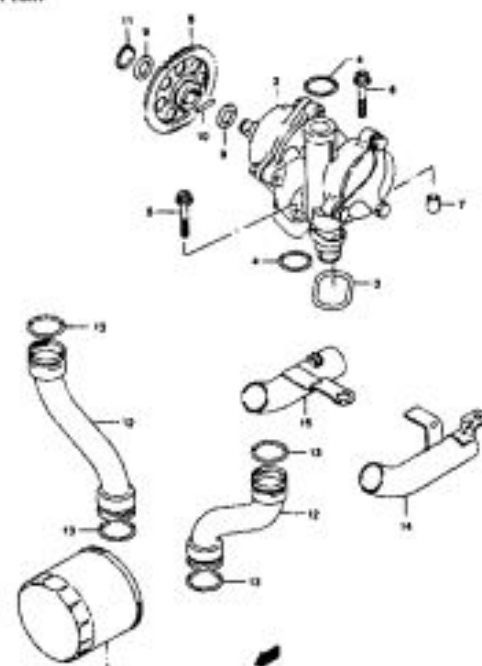
FIG.6



GSF1200BK1 803 E28, 30"
OIL PAN

B 9

FIG.7



GSF1200BK1 803 E28, 30"
OIL PUMP

B 10

AIR CLEANER	C-07
ALTERNATOR	E-03
BATTERY	E-06
CAM CHAIN	C-03
CAM SHAFT / VALVE	C-02
CANISTER	H-02
CARBURETOR FITTING	C-06
CARBURETOR	C-04
CLUTCH MASTER CYL	K-07
CLUTCH	D-02

COWLING BODY	I-02
COWLING INSTALLATION	I-04
CRANKCASE COVER	B-08
CRANKCASE	B-06
CRANKSHAFT	B-11
CYLINDER HEAD COVER	B-03
CYLINDER HEAD	B-04
CYLINDER	B-05
ELECTRICAL	E-05
FOOTREST	G-05

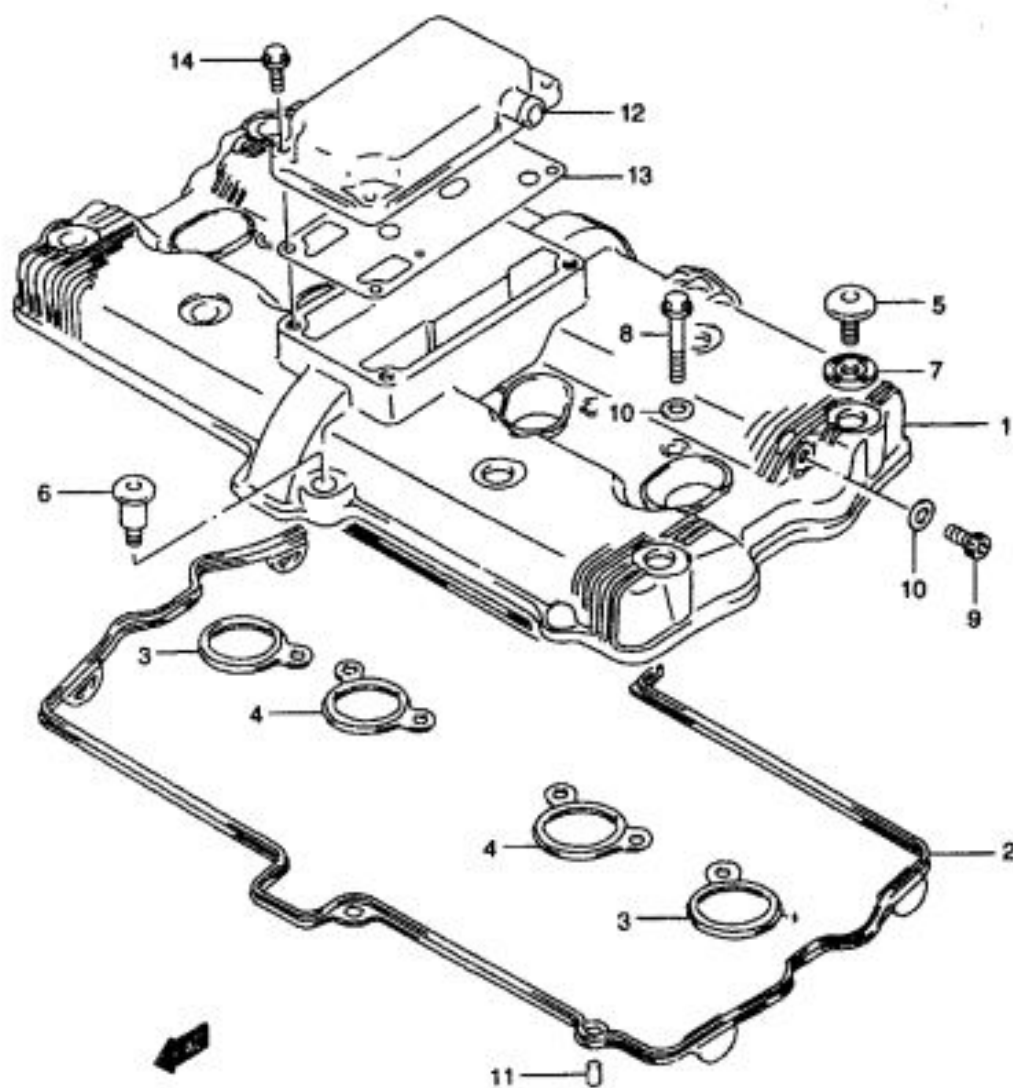
FRAME COVER	H-03
FRAME	G-02
FRONT BRAKE HOSE	K-04
FRONT CALIPERS	K-03
FRONT DAMPER	L-07
FRONT FENDER	H-07
FRONT MASTER CYL	K-05
FRONT WHEEL	K-02
FUEL COCK	G-09
FUEL TANK	G-07

GASKET SET	B-02
GEAR SHIFTING	D-06
HANDLE LEVER	H-10
HANDLE SWITCH	F-09
HANDLEBAR	H-09
HEADLAMP HOUSING	H-06
HEADLAMP	F-02
LABEL	I-05
MANUAL BOX	H-05
MUFFLER	C-08

W/ COOLER	
OIL PAN	
OIL PUMP	
OPTIONAL	
REAR CALIPER	
REAR CUSHION	
REAR FENDER	
REAR MASTER CYL	
REAR SWINGARM	
REAR WHEEL	

FIG.1A

Fig.1A (B=3)



Ref #	Part Number
1	11171-27E00
2	11173-06B02
3	11178-27A01
4	11179-27A02
5	09106-07009
6	09106-07010
7	09161-11008
8	11181-27E00
9	07130-08123
10	09168-08029
11	04221-08129
12	11176-26D00
13	11177-17E00
14	01550-06253

GSF1200SK1 E03 E28_001A
CYLINDER HEAD COVER

GSF1200, S K2 E3, E3

AIR CLEANER.....	C-07	COWLING BODY.....	H-02	FRAME COVER.....	H-03	GASKET SET.....	B-02	OIL COOLER.....	C-08
ALTERNATOR.....	E-03	COWLING INSTALLATIO	H-04	FRAME.....	G-02	GEAR SHIFTING.....	O-00	OIL PAN.....	B-09
BATTERY.....	E-06	CRANKCASE COVER.....	B-06	FRONT BRAKE HOSE.....	K-04	HANDLE LEVER.....	H-10	OIL PUMP.....	B-10
CAM CHAIN.....	C-03	CRANKCASE.....	B-06	FRONT CALIPERS.....	K-03	HANDLE SWITCH.....	F-06	OPTIONAL.....	L-07
CAM SHAFT / VALVE.....	C-02	CRANKSHAFT.....	B-11	FRONT DAMPER.....	J-07	HANDLE BAR.....	H-09	REAR CALIPER.....	L-06
CANISTER.....	H-02	CYLINDER HEAD COVER.....	B-03	FRONT FENDER.....	H-07	HEADLAMP HOUSING.....	H-08	REAR CUSHION LEVER.....	L-03
CARBURETOR FITTING.....	C-06	CYLINDER HEAD.....	B-04	FRONT MASTER CYLIND	K-05	HEADLAMP.....	F-02	REAR FENDER.....	H-11
CARBURETOR.....	C-04	CYLINDER.....	B-05	FRONT WHEEL.....	K-02	LAMP.....	L-05	REAR MASTER CYLIND	L-06
CLUTCH MASTER CYLIN	K-07	ELECTRICAL.....	E-05	FUEL COCK.....	G-09	MANUAL BOX.....	H-05	REAR SWINGING ARM.....	L-02
CLUTCH.....	G-02	FOOTREST.....	G-06	FUEL TANK.....	G-07	MUFFLER.....	C-06	REAR WHEEL.....	L-04

2000-2001 Suzuki GSF1200 Motorcycle Service Repair Parts Manual

Instant download 2000-2001 Suzuki GSF1200 Motorcycle Service Repair Parts Manual.◆◆ This manual content all service, repair, maintenance, troubleshooting procedures for Suzuki Motorcycle Machine.

All major topics are covered step-by-step instruction, diagrams, illustration, wiring schematic, and specifications to repair and troubleshoot. With this factory service repair manual on hand can easily help you with any repairs that you may need for your Suzuki Motorcycle Machine.

Machine model :

GSF1200K1,GSF1200SK1,GSF1200K2,GSF1200SK2

SPECIFICATION:

Pages:117

Format: PDF

Language: English

Compatible: Win/MacAll pages are printable, so run off what you need & take it with you into the garage or workshop.

Save money \$\$ by doing your own repairs! It make it easy for any skill level with these very easy to follow, step-by-step instructions!

Instant download means no shipping cost or waiting for a CD to arrive in the mail◆◆◆you will receive this manual today via instant download on completion of payment via our secure payment processor. We accept all major credit/debit cards/paypal.

Instant download! Thank you for visiting!



Thank you very much
for your reading.
Please click here
to get more information.