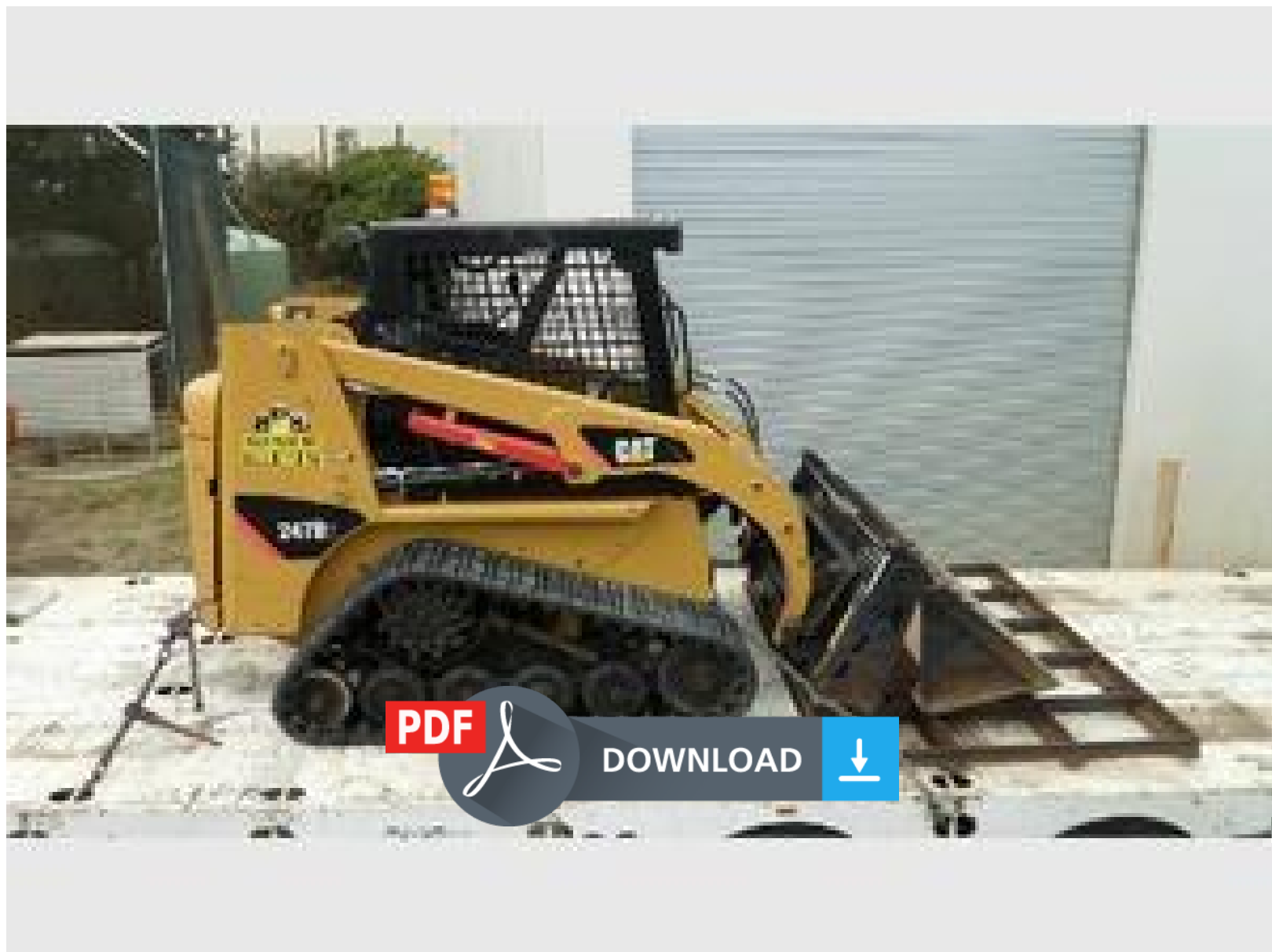


Caterpillar 247B, 257B, 267B, 277B, 287B Multi Terrain Loader Operation and Maintenance Manual



Caterpillar 247B, 257B, 267B, 277B, 287B Multi Terrain Loader Operation and Maintenance Manual

This Downloadable Manual covers every Service & Repair Procedure you will need. DESCRIPTION:

You

can now save yourself BIG money by doing your own repairs! This manual makes any service or repair job easy to do with very easy to follow step-by-step instructions & pictures on all areas of servicing & repairs.

Once

you have downloaded this manual it is yours to keep forever. You can print out one page, chapter or the whole thing. You can also download it to your tablet or smart phone if required.

MODELS

COVERED:

Caterpillar

247B, 257B, 267B, 277B, 287B Multi Terrain Loader General Service Information Caterpillar

247B, 257B, 267B, 277B, 287B Multi Terrain Loader Disassembly and Assembly Caterpillar

247B, 257B, 267B, 277B, 287B Multi Terrain Loader Specifications Caterpillar

247B, 257B, 267B, 277B, 287B Multi Terrain Loader System Operation Caterpillar

247B, 257B, 267B, 277B, 287B Multi Terrain Loader Schematic Caterpillar

247B, 257B, 267B, 277B, 287B Multi Terrain Loader Testing and Adjusting Caterpillar

247B, 257B, 267B, 277B, 287B Multi Terrain Loader Troubleshooting Caterpillar

247B, 257B, 267B, 277B, 287B Multi Terrain Loader Torque Specifications

CONTENTS:

This

high quality Service Repair Workshop Manual covers all repair procedures A-Z. Every repair and service procedure is covered.

COMPUTER

REQUIREMENTS: This

Downloadable Manual will work on All PC & MAC Computers, tablets, mobile phones Etc. The only software needed is adobe reader which in most cases is already loaded onto your computer, if not can be downloaded for free.

IMPORTANT

NOTICE: This

manual will be send within 8-10 hours emailed to the email address you used when checking out after receiving your payment by Bitcoin or PayPal.



Thank you very much
for your reading.
Please click here
to get more information.