

1997-2001 Honda VT600C/CD Motorcycle Service Repair Workshop Manual



PDF



DOWNLOAD



HOW TO USE THIS MANUAL

This service manual describes the service procedures for the VT600C/CD.

Follow the Maintenance Schedule (Section 3) recommendations to ensure that the vehicle is in peak operating condition and the emission levels are within the standards set by the U.S. Environmental Protection Agency and California Air Resources Board.

Performing the first scheduled maintenance is very important. It compensates for the initial wear that occurs during the break-in period.

Sections 1 and 3 apply to the whole motorcycle. Section 2 illustrates procedures for removal/installation of components that may be required to perform service described in the following sections. Sections 4 through 19 describe parts of the motorcycle, grouped according to location.

Find the section you want on this page, then turn to the table of contents on the first page of the section.

Most sections start with an assembly or system illustration, service information and troubleshooting for the section.

The subsequent pages give detailed procedures.

If you don't know the source of the trouble, go to section 21, Troubleshooting.

ALL INFORMATION, ILLUSTRATIONS, DIRECTIONS AND SPECIFICATIONS INCLUDED IN THIS PUBLICATION ARE BASED ON THE LATEST PRODUCT INFORMATION AVAILABLE AT THE TIME OF APPROVAL FOR PRINTING. HONDA MOTOR CO., LTD. RESERVES THE RIGHT TO MAKE CHANGES AT ANY TIME WITHOUT NOTICE AND WITHOUT INCURRING ANY OBLIGATION WHATEVER. NO PART OF THIS PUBLICATION MAY BE REPRODUCED WITHOUT WRITTEN PERMISSION. THIS MANUAL IS WRITTEN FOR PERSONS WHO HAVE ACQUIRED BASIC KNOWLEDGE OF MAINTENANCE ON HONDA MOTORCYCLES, MOTOR SCOOTERS OR ATVS.

HONDA MOTOR CO., LTD.
SERVICE PUBLICATION OFFICE

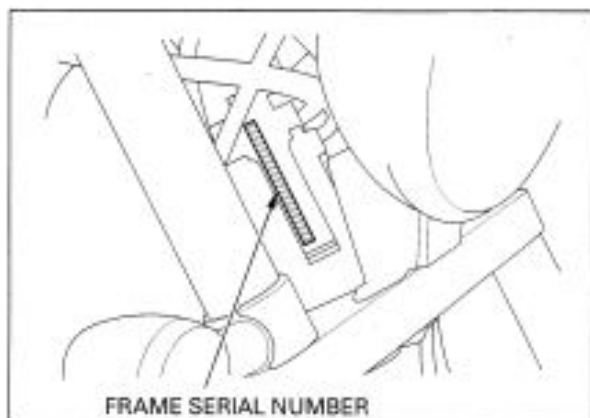
CONTENTS

	GENERAL INFORMATION	1
	FRAME/BODY PANELS/EXHAUST SYSTEM	2
	MAINTENANCE	3
ENGINE AND DRIVE TRAIN	LUBRICATION SYSTEM	4
	FUEL SYSTEM	5
	COOLING SYSTEM	6
	ENGINE REMOVAL/INSTALLATION	7
	CLUTCH/GEARSHIFT LINKAGE	8
	ALTERNATOR/STARTER CLUTCH	9
	CYLINDER HEAD/VALVES	10
	CYLINDER/PISTON	11
	CRANKSHAFT/TRANSMISSION	12
	CHASSIS	FRONT WHEEL/SUSPENSION/STEERING
REAR WHEEL/BRAKE/SUSPENSION		14
HYDRAULIC BRAKE		15
ELECTRICAL	BATTERY/CHARGING SYSTEM	16
	IGNITION SYSTEM	17
	ELECTRIC STARTER	18
	LIGHTS/METERS/SWITCHES	19
	WIRING DIAGRAM	20
	TROUBLESHOOTING	21
	INDEX	22

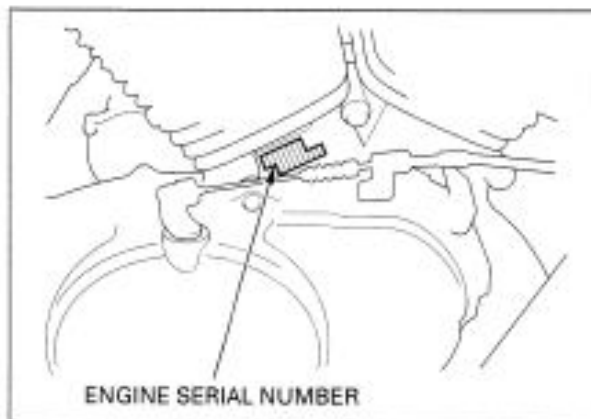
GENERAL INFORMATION

MODEL IDENTIFICATION

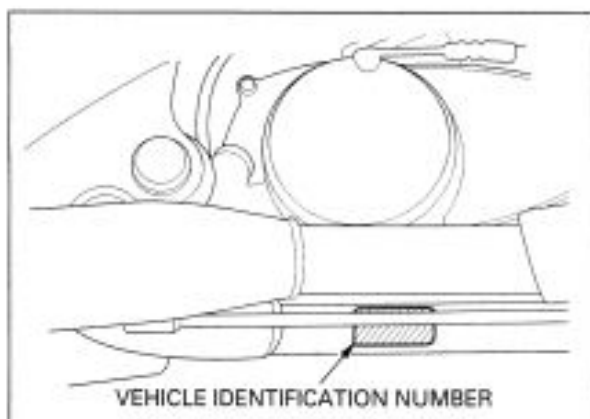
After '98:



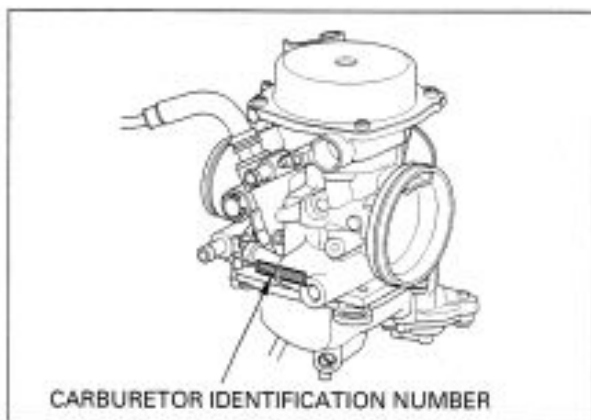
- (1) The frame serial number is stamped on the right side of the steering head.



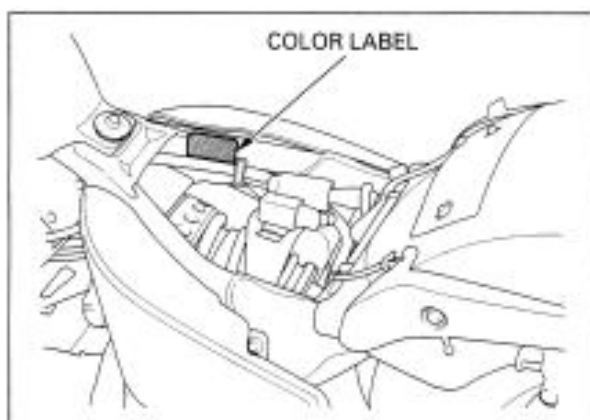
- (2) The engine serial number is stamped on the right side of the crankcase below the rear cylinder.



- (3) The Vehicle Identification Number (VIN) is located on the right side of the frame below the exhaust pipe.



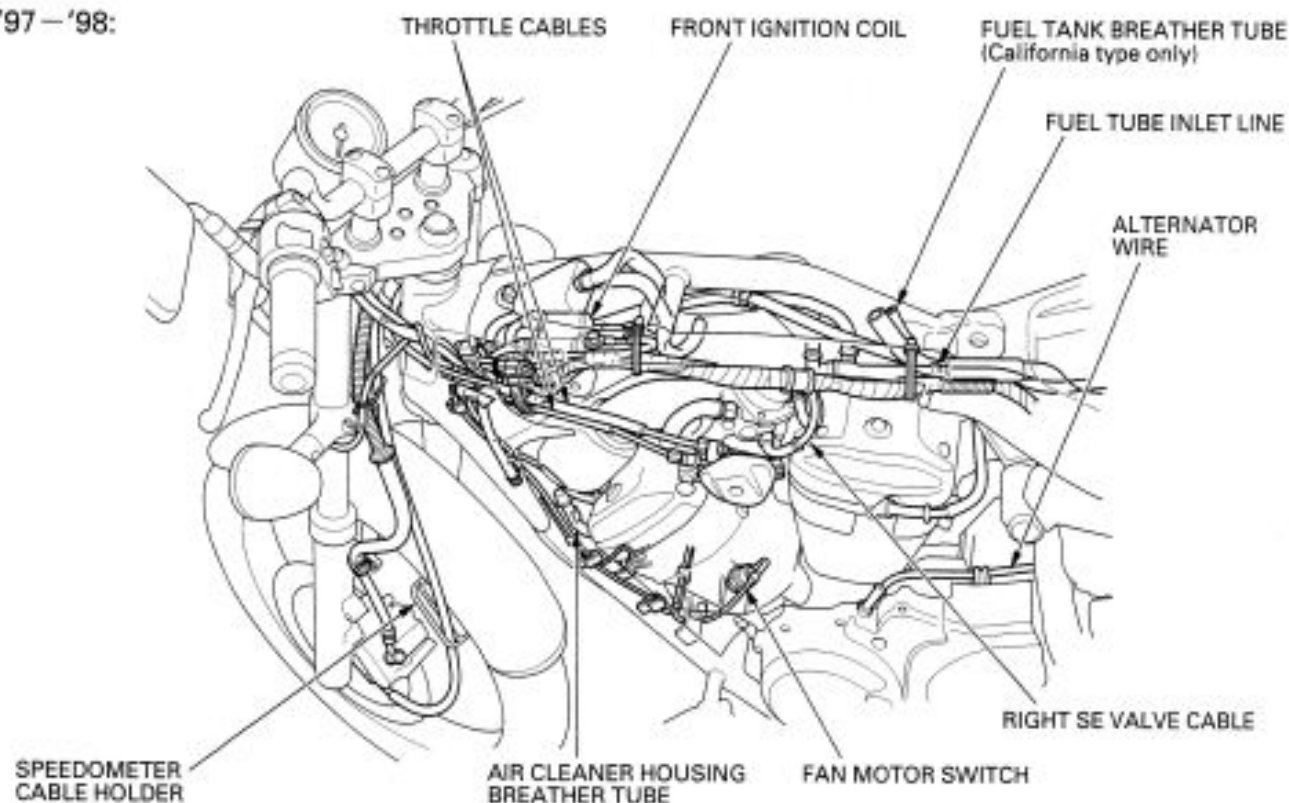
- (4) The carburetor identification numbers are stamped on the fuel tube joint side of the carburetor body as shown.



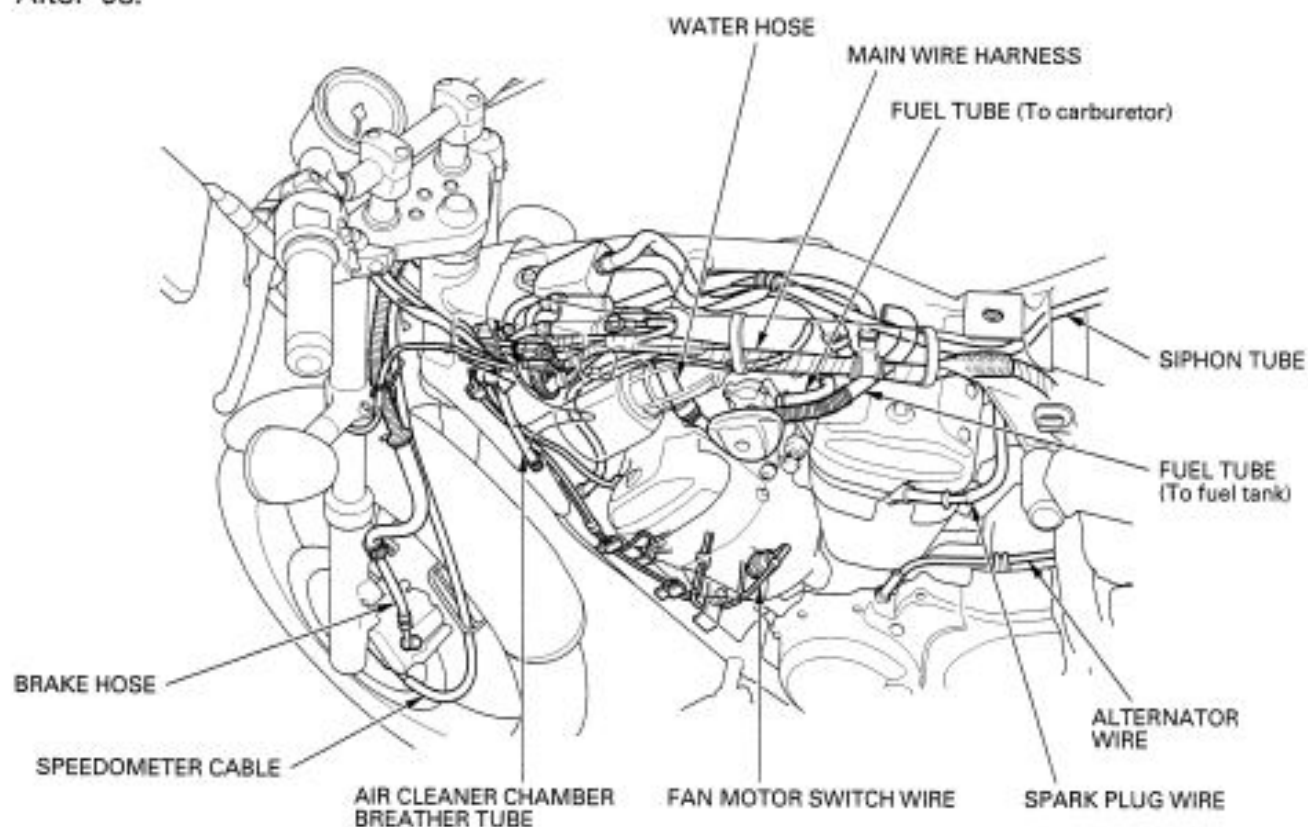
- (5) The color label is attached on the frame under the seat. When ordering color-coded parts, always specify the designated color code.

GENERAL INFORMATION

'97 - '98:



After '98:





Thank you very much
for your reading.
Please click here
to get more information.