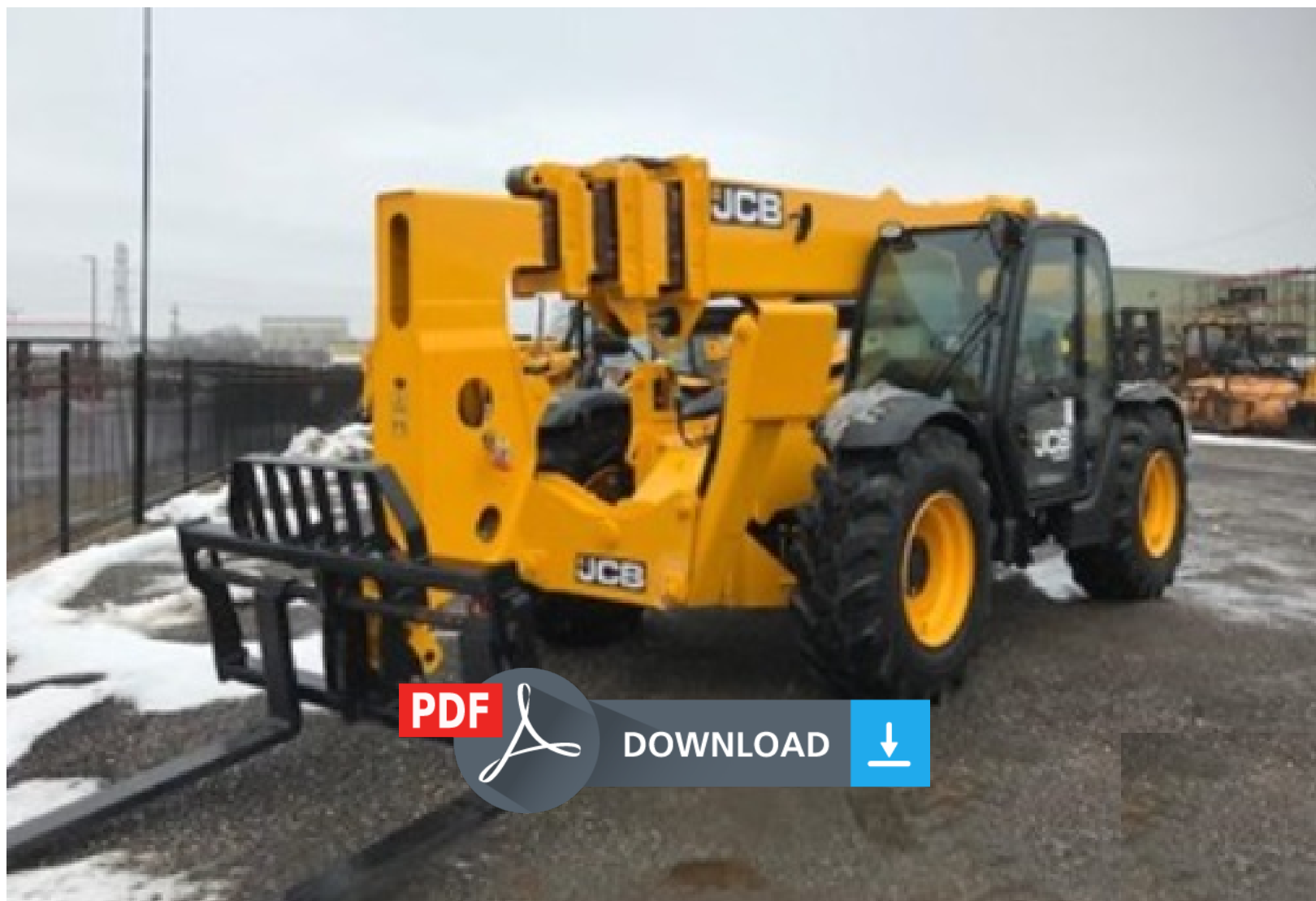


JCB 506-23, 509-23, 512-26 LOADALL (ROUGH TERRAIN VARIABLE REACH TRUCK)
Service Repair Manual (SN: from 2902000 onwards -EN 9813/9400
ISSUE 1 11/2017)



JCB 506-23, 509-23, 512-26 LOADALL (ROUGH TERRAIN VARIABLE REACH TRUCK)
Service Repair Manual (SN: from 2902000 onwards -EN 9813/9400 ISSUE 1 11/2017)

Download Complete Service Repair Manual for JCB 506-23, 509-23, 512-26 LOADALL (ROUGH TERRAIN VARIABLE REACH TRUCK).

EN 9813/9400 ISSUE 1 11/2017

This Factory Service Repair Manual offers all the service and repair information about JCB 506-23, 509-23, 512-26 LOADALL (ROUGH TERRAIN VARIABLE REACH TRUCK). The information on this manual covered everything you need to know when you want to repair or service JCB 506-23, 509-23, 512-26 LOADALL (ROUGH TERRAIN VARIABLE REACH TRUCK).

[Click Here Preview Online](#)

Models Covered:

506-23 SN: from 2902000 onwards

509-23 SN: from 2902000 onwards

512-26 SN: from 2902000 onwards

Manual Contents:

01 Machine

03 Attachments, Couplings and Load Handling

06 Body and Framework

09 Operator Station

12 Heating, Ventilating and Air- Conditioning (HVAC)

15 Engine

18 Fuel and Exhaust System

21 Cooling System

24 Brake System

25 Steering System

27 Driveline

30 Hydraulic System

33 Electrical System

72 Fasteners and Fixings

75 Consumable Products

78 After Sales

..

Total Pages: 3010

This manual can be used by anyone from a first time owner/amateur to a professional technician. Even the most novice mechanic can also easily follow the step-by-step guides which are made simple by the illustrations and drawings. Keep this manual handy and use it often. Performing routine, preventive maintenance will save you time & money by helping to prevent premature failure and unnecessary repairs.

Your email inbox will receive a download link immediately after your payment is completed. So please make sure your email address is correct.



Thank you very much
for your reading.
Please click here
to get more information.