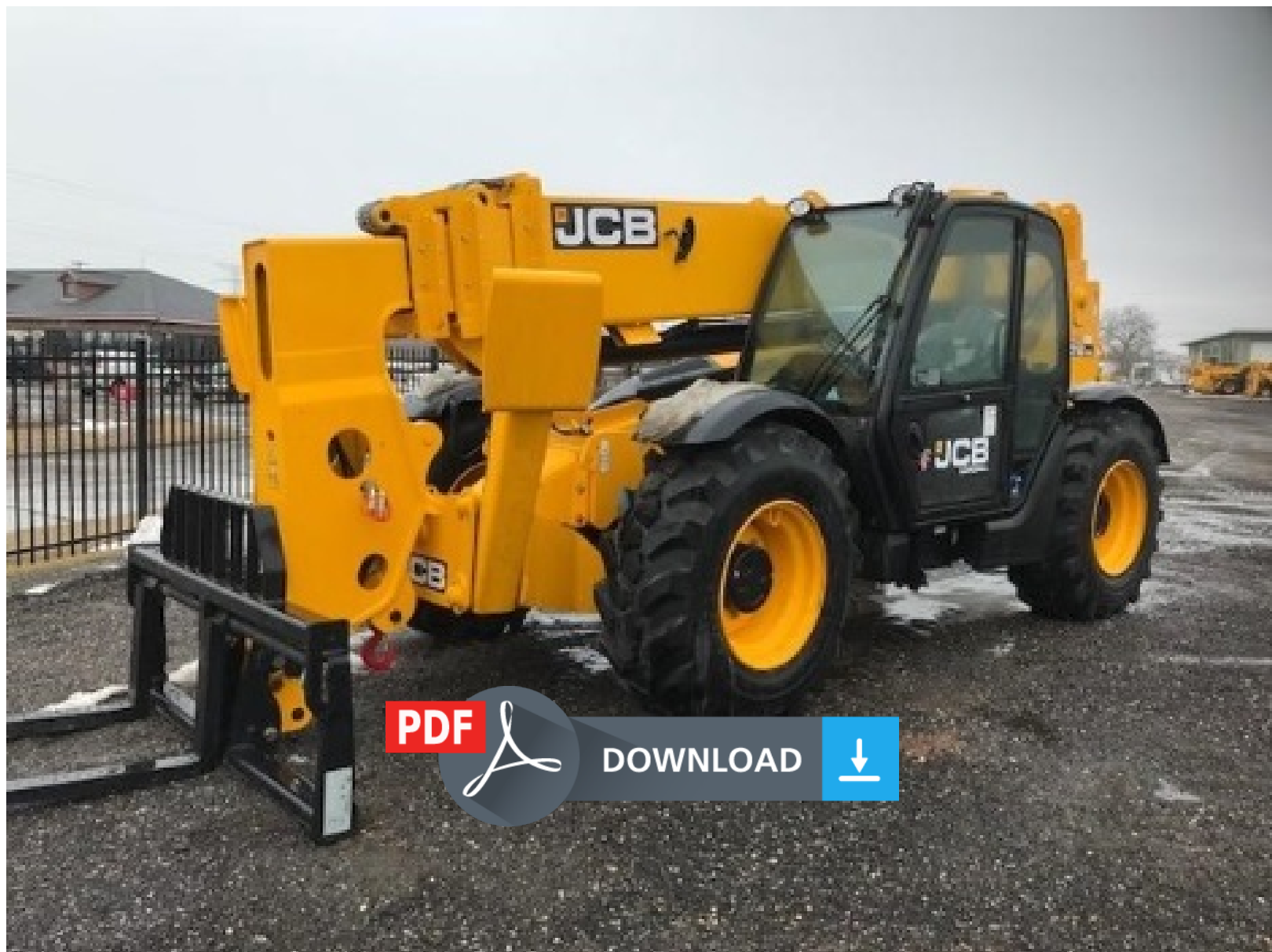


JCB 506-36, 507-42, 509-42, 510-56, 512-56 Loader (Rough Terrain Variable Reach Truck) Service Repair Manual (S/N From: 1402020 and up)



JCB 506-36, 507-42, 509-42, 510-56, 512-56 Loader (Rough Terrain Variable Reach Truck) Service Repair Manual (S/N From: 1402020 and up)

Download Complete Service Repair Manual for JCB 506-36, 507-42, 509-42, 510-56, 512-56 Loader (Rough Terrain Variable Reach Truck).

This Factory Service Repair Manual offers all the service and repair information about JCB 506-36, 507-42, 509-42, 510-56, 512-56 Loader (Rough Terrain Variable Reach Truck). The information on this manual covered everything you need to know when you want to repair or service JCB 506-36, 507-42, 509-42, 510-56, 512-56 Loader (Rough Terrain Variable Reach Truck).

Models Covered:

506-36 S/N From: 1402020 and up

507-42 S/N From: 1402020 and up

509-42 S/N From: 1402020 and up

510-56 S/N From: 1402020 and up

512-56 S/N From: 1402020 and up



This manual is INSTANT DOWNLOAD. It means no shipping cost or waiting for getting a CD package for several days. you will receive this manual today via instant download on completion of payment via our secure payment processor.

Manual Contents:

- 01 Machine
- 03 Attachments, Couplings and Load Handling
- 06 Body and Framework
- 09 Operator Station
- 12 Heating, Ventilating and Air-Conditioning (HVAC)
- 15 Engine
- 18 Fuel and Exhaust System
- 21 Cooling System
- 24 Brake System
- 25 Steering System
- 27 Driveline
- 30 Hydraulic System
- 33 Electrical System
- 72 Fasteners and Fixings
- 75 Consumable Products
- 78 After Sales



Thank you very much
for your reading.
Please click here
to get more information.