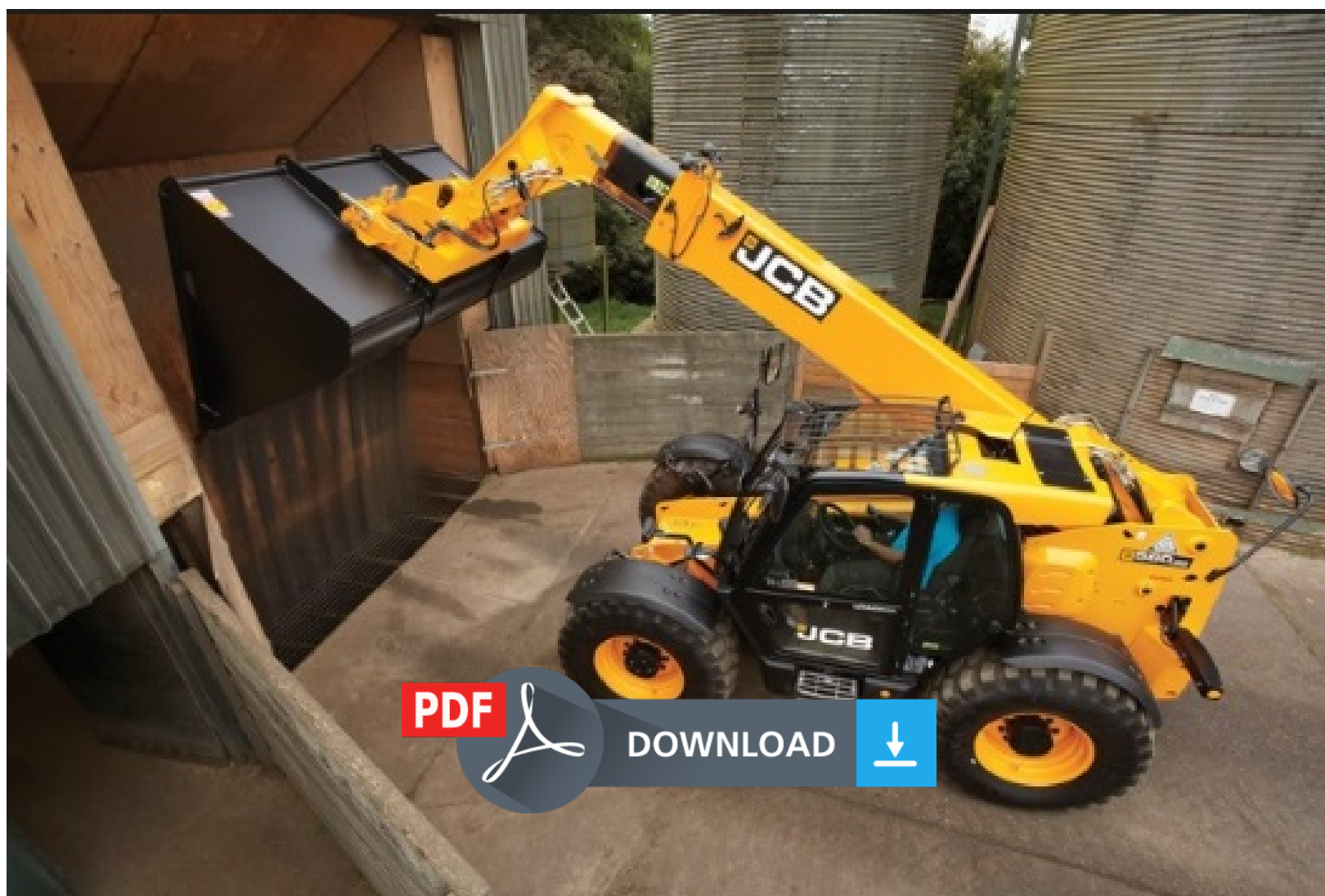


JCB 531-70, 535-95, 536-60, 536-70, 536-70LP, 541-70, 550-80, 560-80 Service Repair Manual (S/N from 2569936 and up , 2724382 and up)



JCB 531-70, 535-95, 536-60, 536-70, 536-70LP, 541-70, 550-80, 560-80 Service Repair Manual (S/N from 2569936 and up , 2724382 and up)

Download Complete Service Repair Manual for JCB 531-70, 535-95, 536-60, 536-70, 536-70LP, 541-70, 550-80, 560-80 Loader (Rough Terrain Variable Reach Truck).

This Factory Service Repair Manual offers all the service and repair information about JCB 531-70, 535-95, 536-60, 536-70, 536-70LP, 541-70, 550-80, 560-80 Loader (Rough Terrain Variable Reach Truck). The information on this manual covered everything you need to know when you want to repair or service JCB 531-70, 535-95, 536-60, 536-70, 536-70LP, 541-70, 550-80, 560-80 Loader (Rough Terrain Variable Reach Truck).

Models Covered:

531-70 ..S/N from 2569936 and up

535-95 ..S/N from 2569936 and up

536-60 ..S/N from 2569936 and up

536-60 ..S/N from 2724382 and up

536-70 ..S/N from 2569936 and up

536-70LP ..S/N from 2569936 and up

541-70 ..S/N from 2569936 and up

550-80 ..S/N from 2569936 and up

560-80 ..S/N from 2569936 and up

◆◆◆ *****

This manual is INSTANT DOWNLOAD. It means no shipping cost or waiting for getting a CD package for several days. you will receive this manual today via instant download on completion of payment via our secure payment processor.

Manual Contents:

01 ◆◆◆ Machine

03 ◆◆◆ Attachments, Couplings and Load Handling

06 ◆◆◆ Body and Framework

09 ◆◆◆ Operator Station

12 ◆◆◆ Heating, Ventilating and Air-Conditioning (HVAC)

15 ◆◆◆ Engine

18 ◆◆◆ Fuel and Exhaust System

21 ◆◆◆ Cooling System

24 ◆◆◆ Brake System

25 ◆◆◆ Steering System

27 ◆◆◆ Driveline

30 ◆◆◆ Hydraulic System

33 ◆◆◆ Electrical System



Thank you very much
for your reading.
Please click here
to get more information.