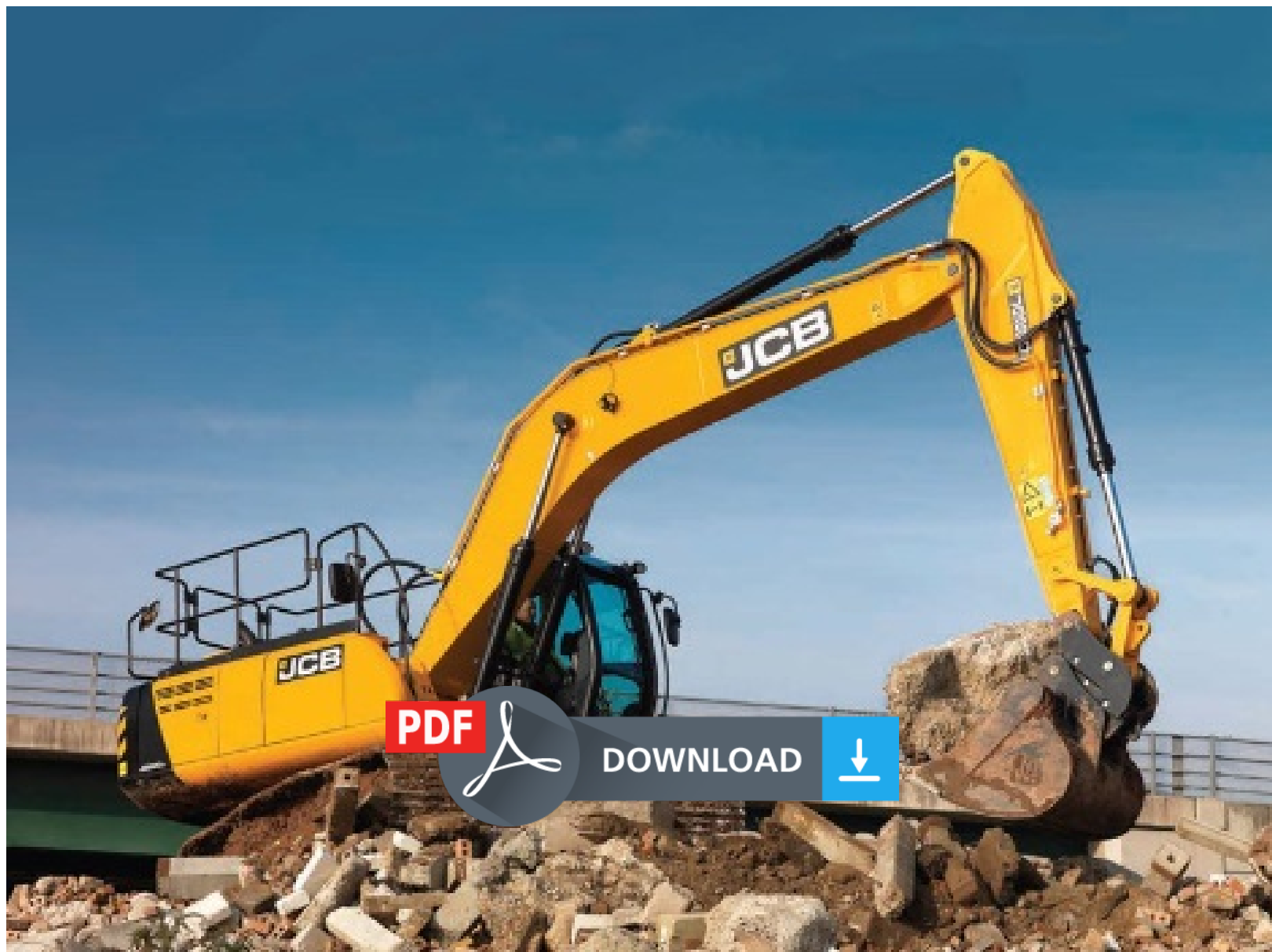


JCB VMT860 Tier 3 Vibratory Rollers Service Repair Manual (VMT860 from SN 2802400 onwards. EN    9813/7300    ISSUE 2    11/2017)



JCB VMT860 Tier 3 Vibratory Rollers Service Repair Manual (VMT860 from SN 2802400 onwards. EN 9813/7300 ISSUE 2 11/2017)

Download Complete Service Repair Manual for JCB JS200, JS210, JS220, JS235 Tracked Excavator. EN 9813/7300 ISSUE 2 11/2017

This Factory Service Repair Manual offers all the service and repair information about JCB JS200, JS210, JS220, JS235 Tracked Excavator. The information on this manual covered everything you need to know when you want to repair or service JCB JS200, JS210, JS220, JS235 Tracked Excavator. Models Covered:

This manual provides information for the following model(s) in the JCB machine range:

JS200.. S/N: from 2135355 onwards

JS210.. S/N: from 2135355 onwards

JS210.. S/N: from 2451101 onwards

JS210.. S/N: from 2460501 onwards

JS220.. S/N: from 2135355 onwards

JS220.. S/N: from 2451101 onwards

JS220.. S/N: from 2460501 onwards

JS235.. S/N: from 2135355 onwards

JS235.. S/N: from 2451101 onwards

JS235.. S/N: from 2460501 onwards

This manual is INSTANT DOWNLOAD. It means no shipping cost or waiting for getting a CD package for several days. you will receive this manual today via instant download on completion of payment via our secure payment processor.

Manual Contents:

- 01 Machine
- 03 Attachments, Couplings and Load Handling
- 06 Body and Framework
- 09 Operator Station
- 12 Heating, Ventilating and Air-Conditioning (HVAC)
- 15 Engine
- 18 Fuel and Exhaust System
- 21 Cooling System
- 27 Driveline
- 30 Hydraulic System
- 33 Electrical System
- 72 Fasteners and Fixings



Thank you very much
for your reading.
Please click here
to get more information.