

# 1998 Yamaha YZF-R1 Motorcycle Service Repair Workshop Manual



**YAMAHA**









**YZF-R1**

**'98**

4XV1-AE1

**SERVICE MANUAL**

# CHAPTER TITLES

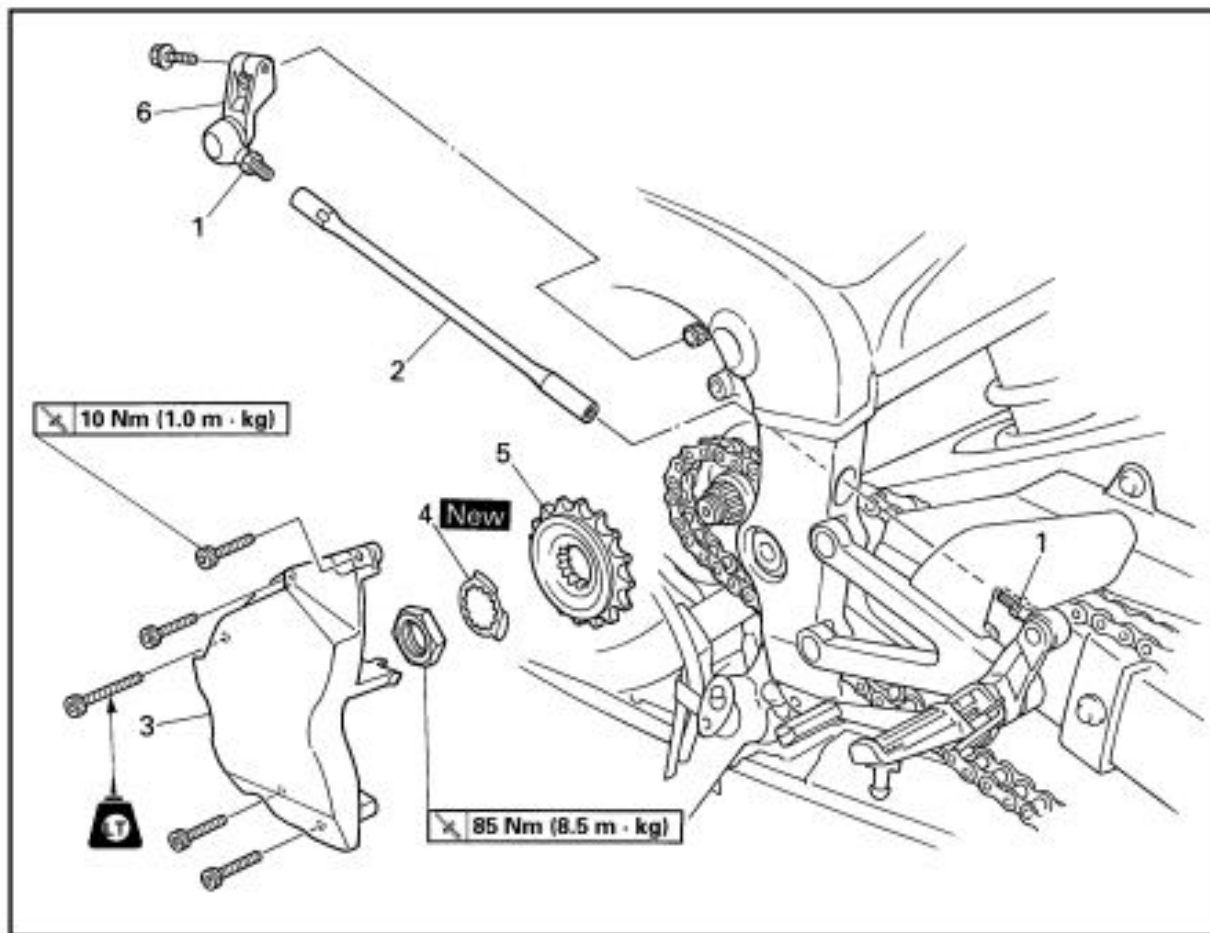
GENERAL INFORMATION		
	GEN INFO	<b>1</b>
SPECIFICATIONS		
	SPEC	<b>2</b>
PERIODIC CHECKS AND ADJUSTMENTS		
	CHK ADJ	<b>3</b>
ENGINE		
	ENG	<b>4</b>
COOLING		
	COOL	<b>5</b>
CARBURETION		
	CARB	<b>6</b>
CHASSIS		
	CHAS	<b>7</b>
ELECTRICAL		
	ELEC	<b>8</b>
TROUBLESHOOTING	<b>?</b>	
	TRBL SHTG	<b>9</b>



ED400011

## OVERHAULING THE ENGINE

## ENGINE



Order	Job/Part	Q'ty	Remarks
	<b>Removing the drive sprocket</b>		Remove the parts in the order listed.
1	Locknut	2	
2	Shift rod	1	
3	Drive sprocket cover	1	
4	Lock washer	1	
5	Drive sprocket	1	
6	Shift arm	1	
			For installation, reverse the removal procedure.



Thank you very much  
for your reading.  
Please click here  
to get more information.