

2004 Yamaha YZF-R1S(C) Motorcycle Service Repair Workshop Manual






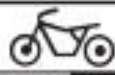




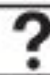


YAMAHA

**YZF-R1S
YZF-R1SC**

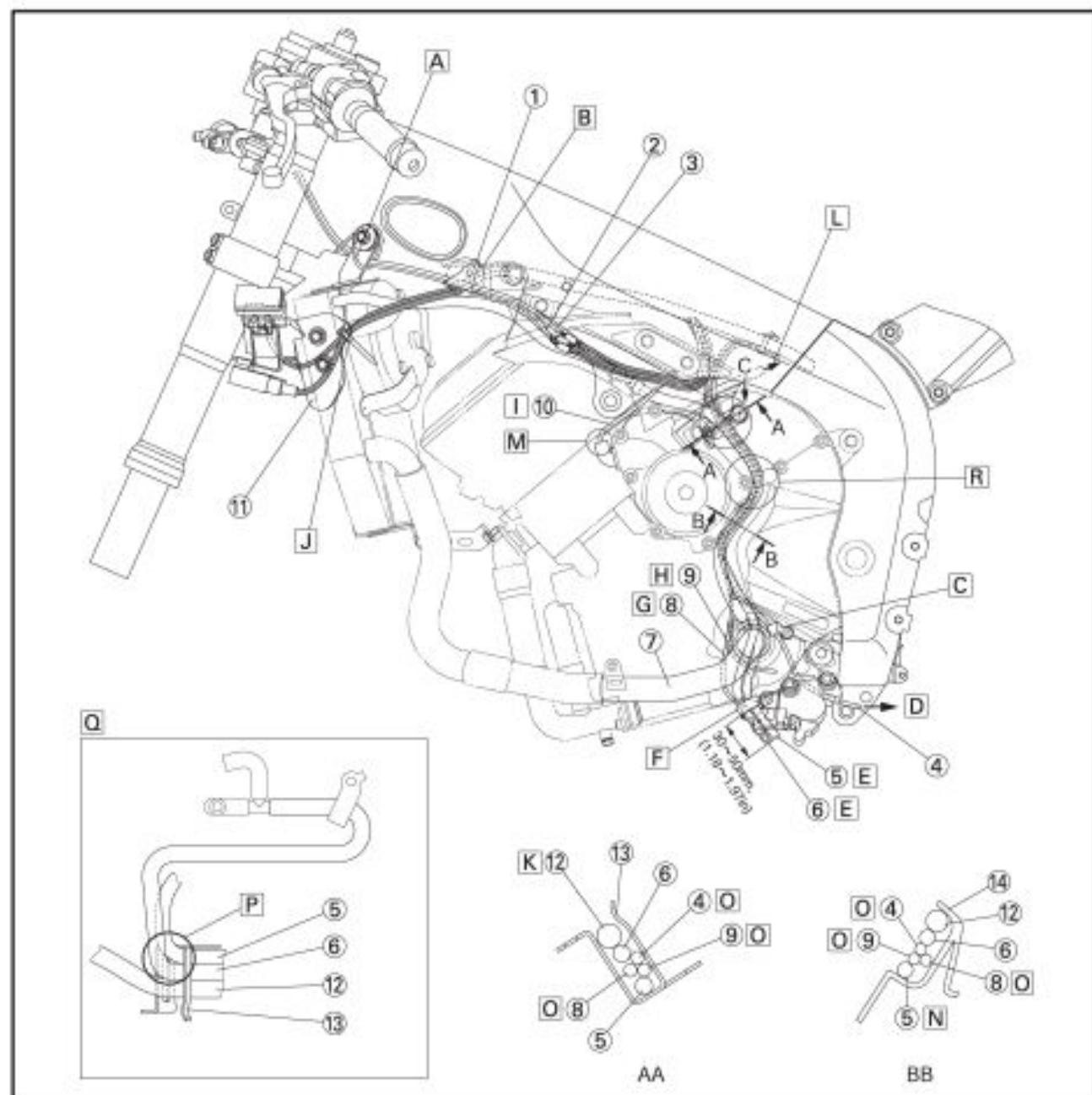
SERVICE MANUAL

TABLE OF CONTENTS

GENERAL INFORMATION	
	GEN INFO 1
SPECIFICATIONS	
	SPEC 2
PERIODIC CHECKS AND ADJUSTMENTS	
	CHK ADJ 3
CHASSIS	
	CHAS 4
ENGINE	
	ENG 5
COOLING SYSTEM	
	COOL 6
FUEL INJECTION SYSTEM	
	FI 7
ELECTRICAL SYSTEM	
	ELEC 8
TROUBLESHOOTING	
	TRBL SHTG 9



- G** Route the lead by the inside of the water hose and water pipe.
- H** Route the lead by the inside of the water hose and water pipe.
- I** Route by the outside of vehicle away from the water hose.
- J** Point the tip of the clamp (excessive part) to the down rear side of the vehicle. Fasten the wire harness with a clamp.
- K** Route the water hose so that it is placed at the outermost position finally after routing other leads and hoses in the guide.
- L** To the coolant reservoir tank
- M** There should be no exposure of bared conductors due to the displacement of the tube.
- N** Route the coolant reservoir tank drain hose so that it is routed at the innermost position to each hose and lead.
- O** Can be routed in any order.
- P** Align the molded part of the fuel tank drain hose with the stay 1.
- Q** Routing of the fuel tank drain hose.
- EXUP servo motor, oil level switch and sidestand switch leads are omitted in this drawing.
- R** Arrange so as not for each hose to cross in the part between "BB" from the section "AA" which is in the illustration.





Thank you very much
for your reading.
Please click here
to get more information.