

2005 Yamaha YFM700RV ATV Service Repair Workshop Manual














YFM700RV

SERVICE MANUAL

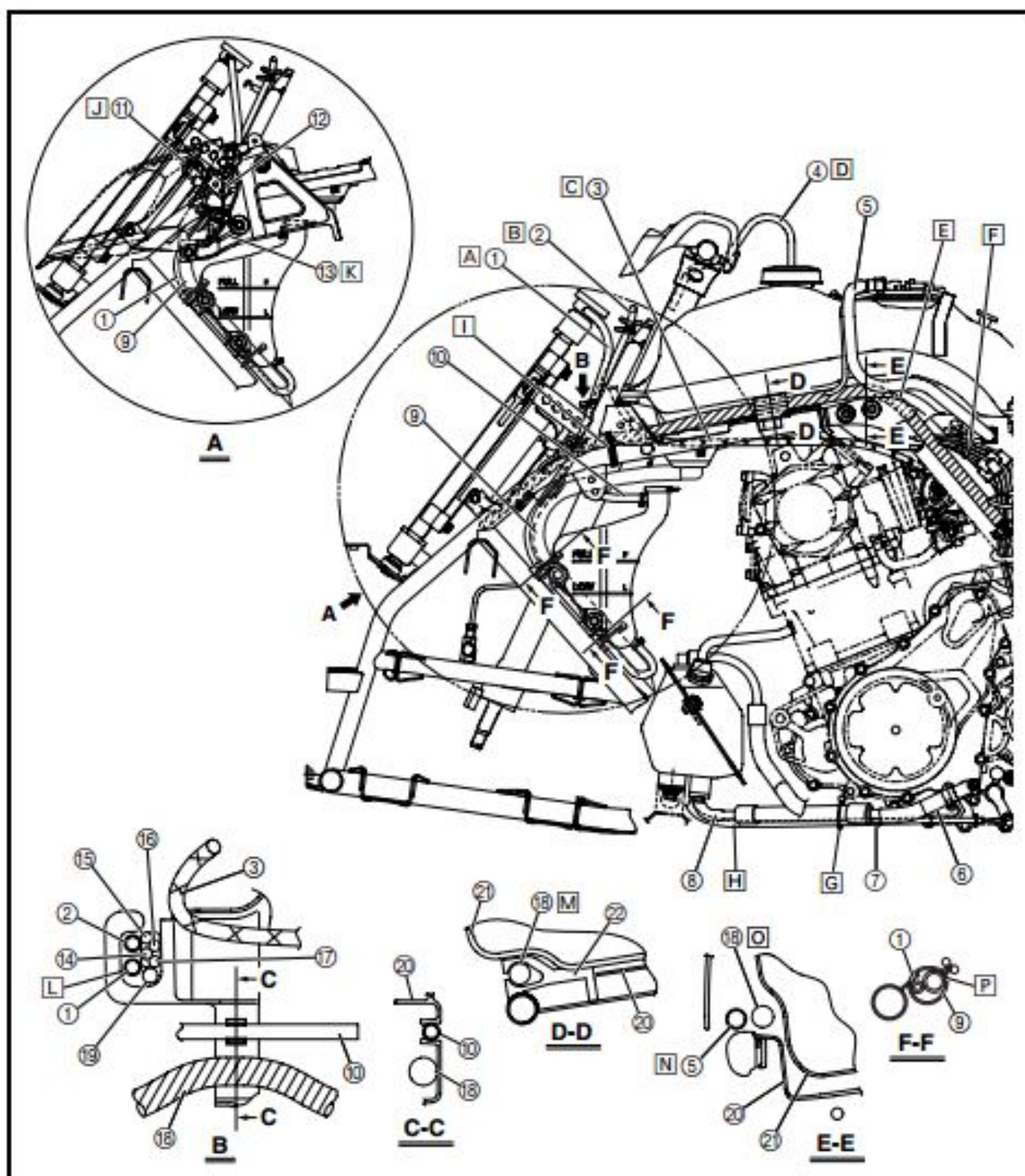
TABLE OF CONTENTS

GENERAL INFORMATION	 GEN INFO 1
SPECIFICATIONS	 SPEC 2
PERIODIC CHECKS AND ADJUSTMENTS	 CHK ADJ 3
ENGINE	 ENG 4
COOLING SYSTEM	 COOL 5
FUEL INJECTION SYSTEM	 FI 6
CHASSIS	 CHAS 7
ELECTRICAL	 ELEC 8
TROUBLESHOOTING	 TRBL SHTG 9



- A** Route the coolant reservoir hose in front of the radiator fan breather hose, and then connect it to the radiator.
- B** Pass the radiator fan breather hose through the wire guide.
- C** Route the throttle cable on top of the fuel tank shield.
- D** Pass the fuel tank breather hose through the hole in the handlebar cover, and then insert the end of the hose into the steering stem.

- E** Route the wire harness to the inside of the frame.
- F** Connect the A.C. magneto lead, wire sub lead, rear brake switch lead, and speed sensor lead, and then fasten the leads with the plastic band. Face the end of the plastic band inward.
- G** Fasten the oil tank outlet hose and reverse control cable with the clamp, making sure that the reverse control cable does not contact the edge of the engine stay.





Thank you very much
for your reading.
Please click here
to get more information.