

# 50G Excavator (SN. from H280001) Operate and Maintenance



JOHN HARE



COLLECTION

## OPERATOR'S MANUAL

**FT4 models 50G (PIN: 1FF050GX\*\*H280001—)**

OMT333114 08 APR 15 (ENGLISH)



John Deere Construction and Forestry  
Printed by Belgreen



## Table of contents

### **FOREWORD**

### **MANUAL IDENTIFICATION—READ THIS FIRST!**

### **IMPORTANT**

### **FCC NOTIFICATIONS TO USER**

### **TECHNICAL INFORMATION FEEDBACK FORM**

#### **Section 1 - SAFETY**

- Group 1.1 - Safety and Operator Conveniences
- Group 1.2 - General Precautions
- Group 1.3 - Operating Precautions
- Group 1.4 - Maintenance Precautions
- Group 1.5 - Safety Signs

#### **Section 2 - OPERATION**

- Group 2.1 - Operator's Station
- Group 2.2 - Monitor Operation
- Group 2.3 - Operating the Machine

#### **Section 3 - MAINTENANCE**

- Group 3.1 - Machine
- Group 3.2 - Periodic Maintenance
- Group 3.3 - As Required
- Group 3.4 - Every 10 Hours or Daily
- Group 3.5 - Initial Service - 50 Hours
- Group 3.6 - Every 100 Hours
- Group 3.7 - Initial Service - 250 Hours
- Group 3.8 - Every 250 Hours
- Group 3.9 - Every 500 Hours
- Group 3.10 - Every 1000 Hours
- Group 3.11 - Every 2000 Hours
- Group 3.12 - Every 3000 Hours

#### **Section 4 - MISCELLANEOUS**

- Group 4.1 - Machine
- Group 4.2 - Operational Checkout
- Group 4.3 - Troubleshooting
- Group 4.4 - Storage
- Group 4.5 - Serial Numbers
- Group 4.6 - Specifications



## Foreword

READ THIS MANUAL carefully to learn how to operate and service your machine correctly. Failure to do so could result in personal injury or equipment damage. This manual and safety signs on your machine may also be available in other languages; see your John Deere dealer to order.

THIS MANUAL SHOULD BE CONSIDERED a permanent part of your machine and should remain with the machine when you sell it.

MEASUREMENTS in this manual are given in both metric and customary U.S. unit equivalents. Use only correct replacement parts and fasteners. Metric and inch fasteners may require a specific metric or inch wrench.

RIGHT-HAND AND LEFT-HAND sides are determined by facing in the direction of forward travel.

WRITE PRODUCT IDENTIFICATION NUMBERS (P.I.N.) in the Machine Numbers section. Accurately record all the numbers to help in tracing the machine if machine is ever stolen. Your dealer also needs these numbers when you order parts. File the identification numbers in a secure place off the machine.

WARRANTY is provided as part of John Deere's support program for customers who operate and maintain their equipment as described in this manual. The warranty is explained on the warranty certificate or statement which you should have received from your dealer.

This warranty provides you the assurance that John Deere will back its products where defects appear within the warranty period. In some circumstances, John Deere also provides field improvements, often without charge to the customer, even if the product is out of warranty. Should the equipment be abused, or modified to change its performance beyond the original factory specifications, the warranty will become void and field improvements may be denied. Setting fuel delivery above specifications or otherwise overpowering machines will result in such action.

If you are not the original owner of this machine, it is in your interest to contact your local John Deere dealer to inform them of this unit's serial number. This will help John Deere notify you of any issues or product improvements.

## Manual Identification—READ THIS FIRST!

### IMPORTANT:

*Use only supporting manuals designated for your specific machine. If incorrect manual is chosen, improper service may occur. Verify product identification number (PIN) when choosing the correct manual.*

### Choosing the Correct Supporting Manuals

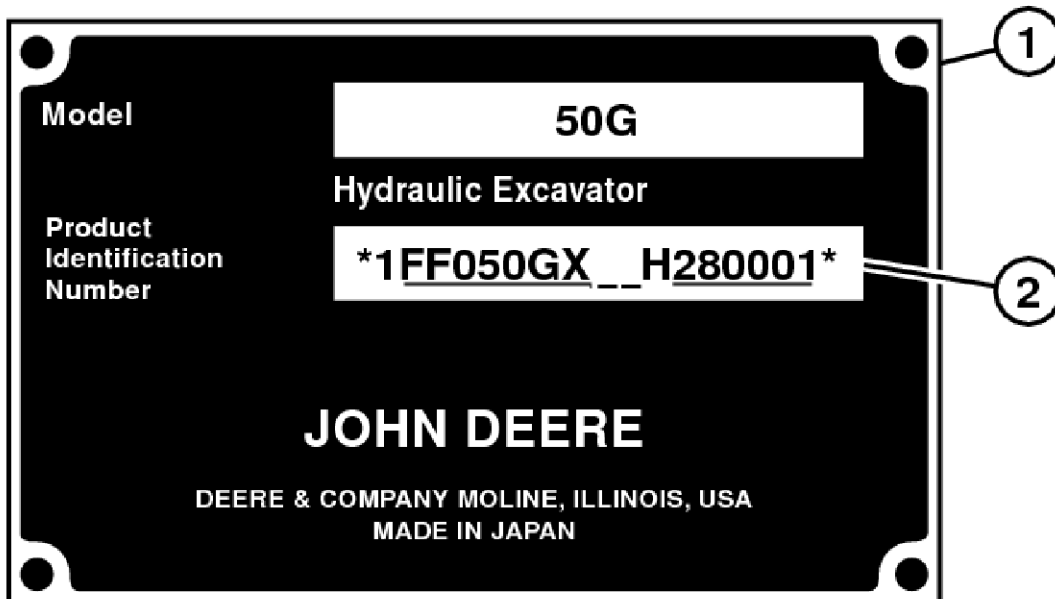
John Deere excavators are available in different machine configurations based on the various markets into which they are sold. Different supporting manuals exist for different machine configurations.

When necessary, product identification numbers are listed on the front covers of excavator manuals. These numbers are used to identify the correct supporting manual for your machine.

### Product Identification Number



**PIN Plate Location**



**Example of PIN Plate**

#### LEGEND:

- 1 PIN Plate
- 2 17-Character PIN

The product identification number (PIN) plate (1) is located on the right-side of machine on the frame. Each machine has a 17-character PIN (2) shown on PIN plate.



Thank you very much  
for your reading.  
Please click here  
to get more information.