

Operator's Manual

EX1200-5D

Excavator

EX1200-5D HYDRAULIC EXCAVATOR OPERATOR'S MANUAL



 **Hitachi Construction Machinery**

Head Office : 5-1, Koraku 2-chome, Bunkyo-ku, Tokyo 112-0004, Jap



This manual is printed on recycled paper.

PRINTED IN JAPAN (E) 2006,01

EM18F – EN1 – 1

Serial No. 003001 and up

HITACHI

INTRODUCTION

Read this manual carefully to learn how to operate and service your machine correctly. Failure to do so could result in personal injury or machine damage.

This standard specification machine can be operated under the following conditions without being modified.

Atmospheric Temperature: -20°C to 50°C (-4°F to 122°F)

Altitude: 0 m to 2000 m (0 ft to 6600 ft)

In case the machine is used under conditions other than described above, consult your nearest Hitachi dealer.

This manual should be considered a permanent part of your machine and should remain with the machine when you sell it.

This machine is of metric design. Measurements in this manual are metric. Use only metric hardware and tools as specified.

Right-hand and left-hand sides are determined by facing in the direction of forward travel.

Write product identification numbers in the Machine Numbers section. Accurately record all the numbers to help in tracing the machine should it be stolen. Your dealer also needs these numbers when you order parts. If this manual is kept on the machine, also file the identification numbers in a secure place off the machine.

Warranty is provided as a part of Hitachi's support program for customers who operate and maintain their equipment as described in this manual. The warranty is explained on the warranty certificate which you should have received from your dealer.

This warranty provides you the assurance that Hitachi will back its products where defects appear within the warranty period. In some circumstances, Hitachi also provides field improvements, often without charge to the customer, even if the product is out of warranty.

Should the equipment be abused, or modified to change its performance beyond the original factory specifications, the warranty will become void and field improvements may be denied.

Setting fuel delivery above specifications or otherwise overpowering machines will result in such action.

Only qualified, experienced operators officially licensed (according to local law) should be allowed to operate the machine. Moreover, only officially licensed personnel should be allowed to inspect and service the machine.

Prior to operating this machine in a country other than a country of its intended use, it may be necessary to make modifications to it so that it complies with the local standards (including safety standards) and requirements of that particular country. Please do not operate this machine outside of the country of its intended use until such compliance has been confirmed. Please contact Hitachi Construction Machinery Co., Ltd. or any of our authorized distributor or dealer if you have any questions concerning compliance.

All information, illustrations and specifications in this manual are based on the latest product information available at the time of publication. The right is reserved to make changes at any time without notice.

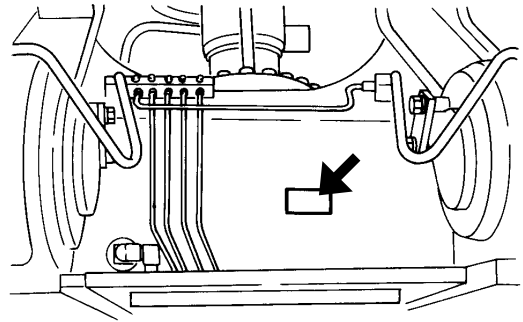
MACHINE NUMBERS

The manufacturing Nos. explained in this group is the individual number (serial No.) given to each machine and hydraulic components. These numbers are requested when inquiring any information on the machine and/or components. Fill these serial Nos. in the blank spaces in this group to immediately make them available upon request.

MACHINE

MODEL/TYPE: _____

PRODUCT
IDENTIFICATION
NUMBER: _____



M142-12-001

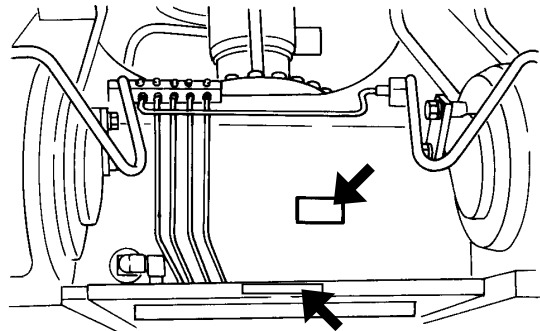
PRODUCT IDENTIFICATION NUMBER

PRODUCT
IDENTIFICATION
NUMBER: _____

 NOTE:

HCM18F00000003001 Marks to indicate the start and end of the PIN

PRODUCT IDENTIFICATION NUMBER (PIN)

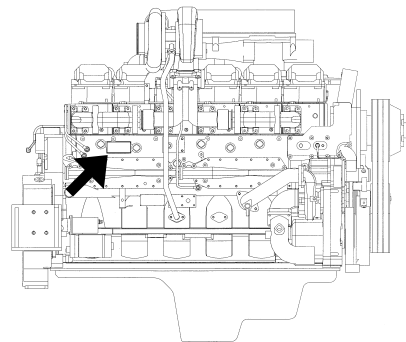


M142-12-001

ENGINE

TYPE: _____

MFG. NO.: _____

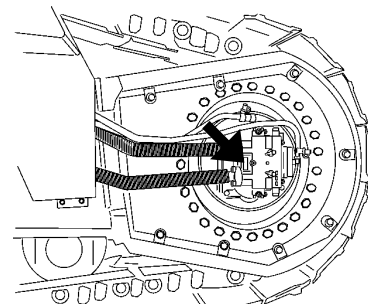


M18E-01-008

TRAVEL MOTOR

TYPE: _____

MFG. NO.: _____



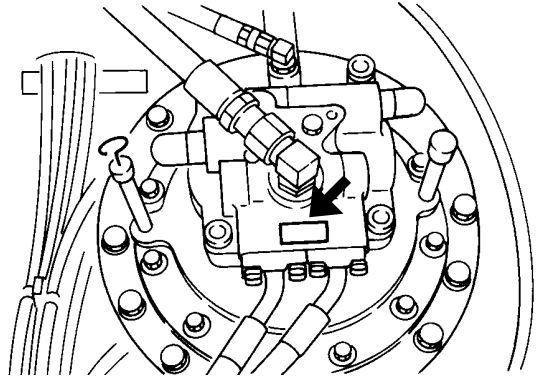
M183-01-001

MACHINE NUMBERS

SWING MOTOR

TYPE: _____

MFG. NO.: _____

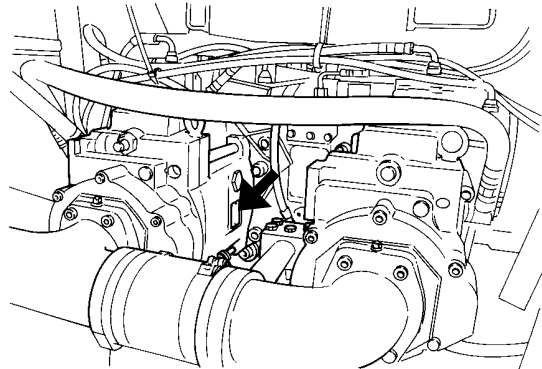


M142-12-003

HYDRAULIC PUMP

TYPE: _____

MFG. NO.: _____

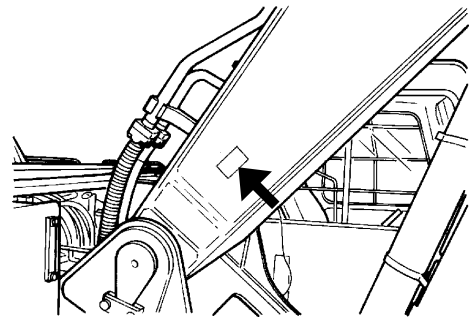


M142-12-004

BOOM

TYPE: _____

MFG. NO.: _____

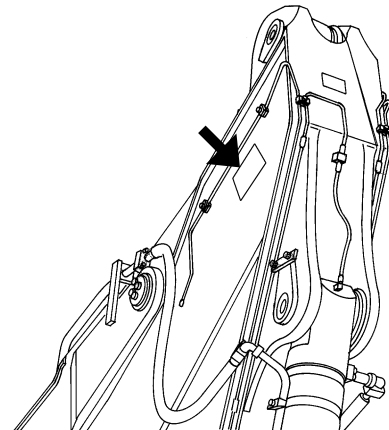


M111-12-005

ARM

TYPE: _____

MFG. NO.: _____



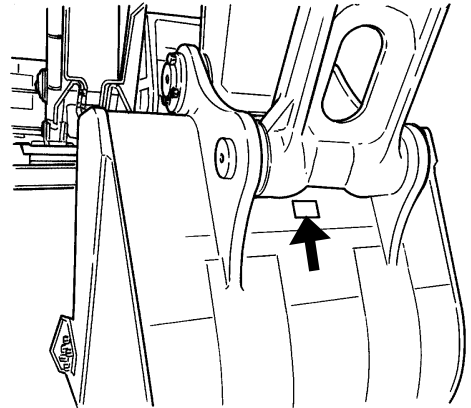
M17V-00-005

MACHINE NUMBERS

BUCKET

TYPE: _____

MFG. NO.: _____



M116-12-004



Thank you very much
for your reading.
Please click here
to get more information.