

Case 21D,121D,221D,321D Small Wheel Loaders Service Repair Workshop Manual



TECHNICAL HANDBOOK

21D/121D/221D/321D

01 General

02 Service data

03 Engine

04 Travel drive

05 Axles

06 Steering

07 Brakes

08 Working hydraulic

09 Electrical system

10 Frame

11 Fittings, pipes and hoses

12 Sealing, protective, testing and cleaning agents

Axial-piston pump for 321D

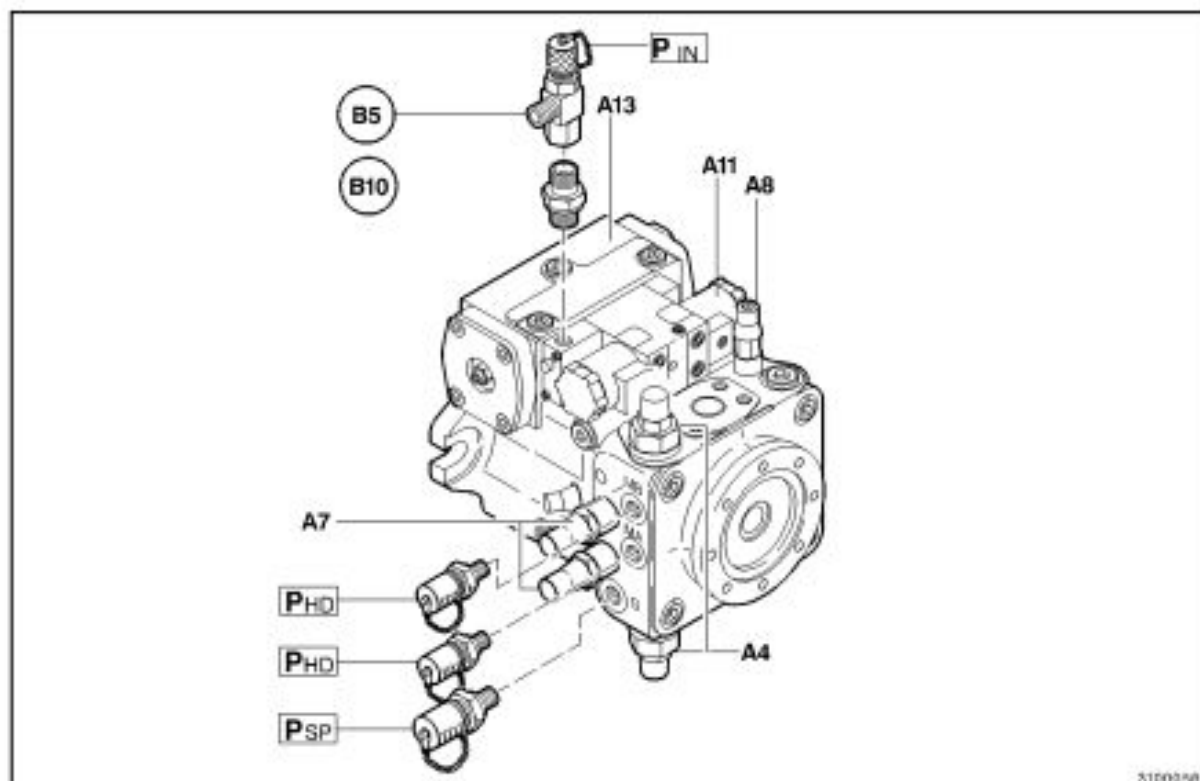


Fig. 8

Items Fig. 8

- A4** - Hydraulic pressure relief valves, unlockable
- A7** - Regulating valve
- A8** - Pressure cut-off
- A9** - Supply pressure relief valve
- A11** - Electromagnetically activated switching valve for forward and reverse travel
- A13** - Adjusting cylinder forward/reverse/neutral

- B5** - Pedal-operated brake valve
- B10** - Inching valve

Pressure measuring ports

- P_{SP}** - Supply pressure
- P_{HD}** - Travelling high pressure
- P_{IN}** - Inching pressure

Hydraulic connections

- MA** - Measuring port, reverse travel
- MB** - Measuring port, forward travel

□



Thank you very much
for your reading.
Please click here
to get more information.