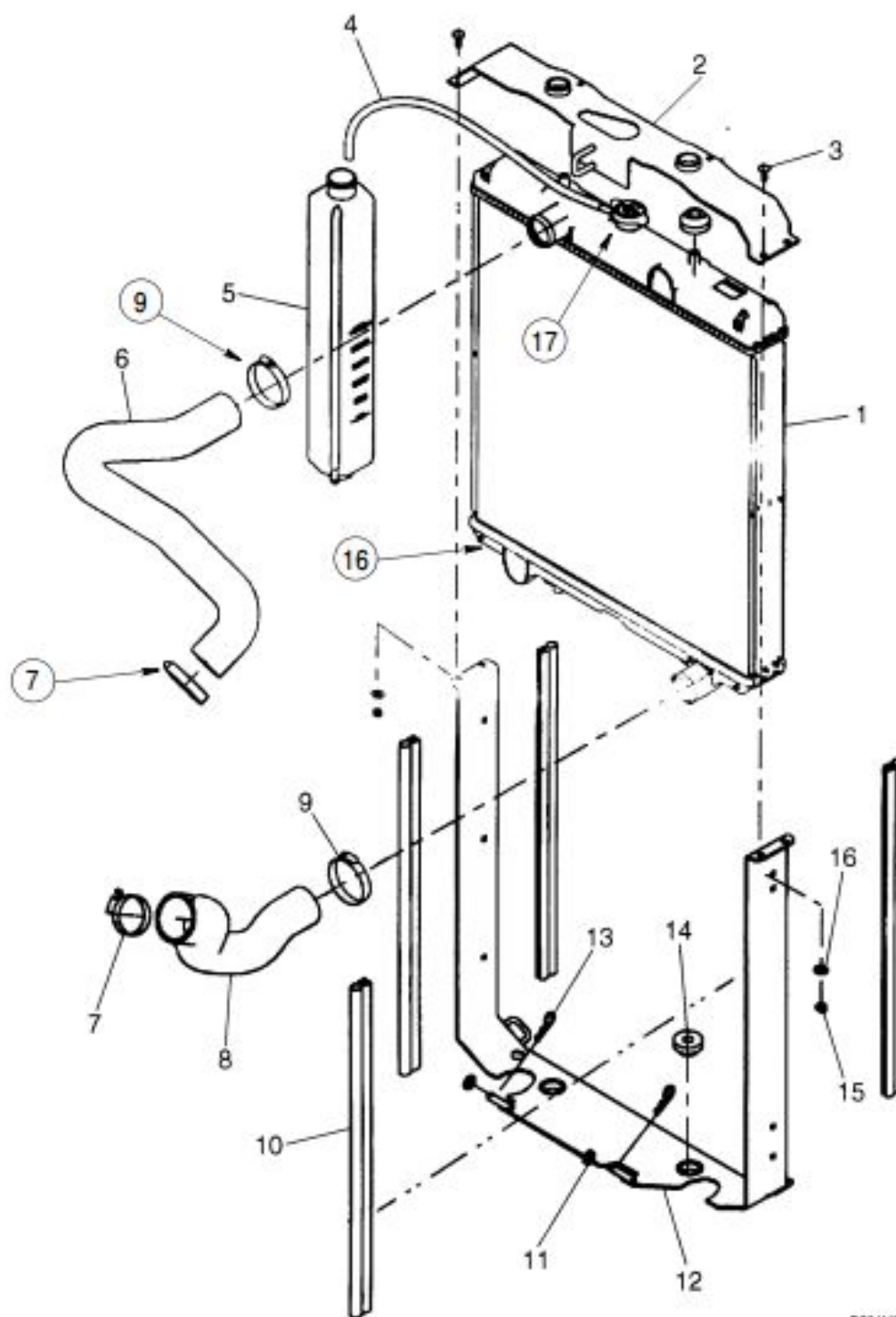


Case 430 And 440 Skid Steers Service Repair Workshop Manual



**430/440 SKID STEER
Service Manual
Bur 6-78960
Table of Contents**

Description	Section Number	Publication Form Number
General		Tab 1
Section Index - General		6-79150
Fluids and Lubricants	1001	6-79030
Standard Torque Specifications	1002	7-52931
Metric Conversion Chart	1003	7-52950
Engines		Tab 2
Section Index - Engines		6-79160
Engine and Radiator Removal and Installation	2000	6-79290
For Engine Repair - See Engine Service Manual		6-74500
Fuel Systems		Tab 3
Section Index - Fuel Systems		6-79170
For Fuel System Repair - See the Engine Service Manual		6-74500
Electrical		Tab 4
Section Index - Electrical		6-79180
Electrical System Specifications, Troubleshooting, and Schematics	4001	6-79370
Battery	4005	7-51310
Starter and Starter Solenoid	4006	7-53090
Power Train		Tab 6
Section Index - Power Train		6-79190
Hydrostatic System Troubleshooting	6001	6-79330
Removal and Installation of Hydrostatic Components	6002	6-79320
Drive Coupling	6003	6-79230
Piston Pump	6004	6-49580
Drive Motors Single Speed	6005	6-79000
Drive Motors Two Speed	6005	6-79010
Sprocket, Chains, and Axle Assemblies	6007	6-79300
Wheels and Tires	6011	6-79310



1. RADIATOR
2. UPPER FRAME ASSEMBLY
3. BOLT
4. COOLANT RECOVERY HOSE
5. COOLANT EXPANSION RESERVOIR
6. UPPER RADIATOR HOSE
7. CLAMP
8. LOWER RADIATOR HOSE
9. CLAMP

10. SEAL
11. WASHER
12. LOWER FRAME ASSEMBLY
13. SPLIT PIN
14. CUSHION
15. NUT
16. DRAIN VALVE
17. RADIATOR CAP

430 AND 440 RADIATOR MOUNTING

STEP 28



BD05A040

Loosen and remove the bolts that fasten all of the wire harnesses to the engine. Cut all tie straps that fasten wire harnesses to the engine.

STEP 29

Move all of the wiring harnesses out of the way.

STEP 30



BD01C219

Close the fuel valves.

STEP 31



BD05A052

Disconnect the fuel line from the fuel pump.

STEP 32



BD05A040

Start the vacuum pump. Disconnect the hoses from the high flow pump (if equipped). Install caps on the fittings and plugs in the hoses.

STEP 33



BD05A067

Tag and disconnect the all of the hydraulic lines, control linkage, and electrical connections from the tandem pump. Install caps on all of the fittings and plugs in all of the hoses. Stop the vacuum pump.

STEP 34

Connect equipment to the tandem pump that will hold the tandem pump in position when the engine is removed.



Thank you very much
for your reading.
Please click here
to get more information.