

Case CX130 Crawler Excavators Service Repair Workshop Manual

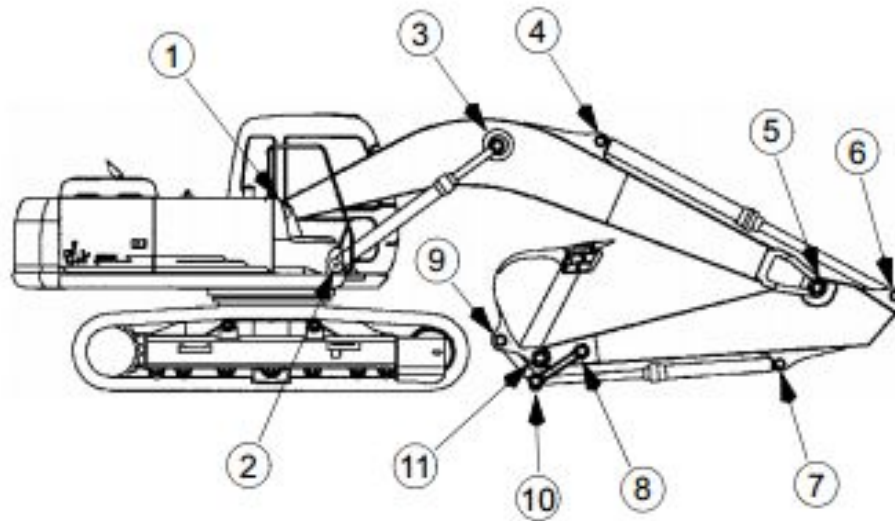


CX130 Crawler Excavators

Table of Contents

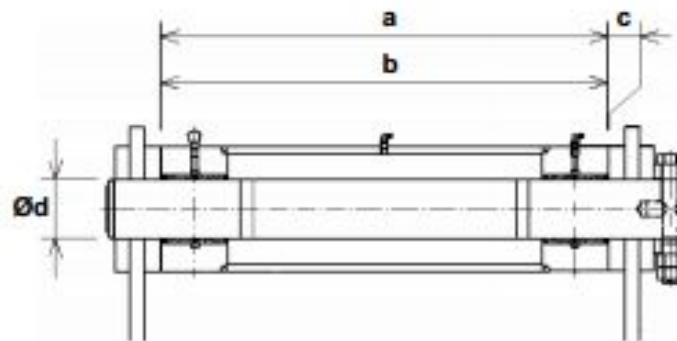
DIVISION/SECTION	SECTION N°	REFERENCE N°
1 GENERAL INFORMATION		
Safety, general information and standard torque data	1001	7-27690GB
General specifications and special torque setting	1002	7-27715GB
2 ENGINE		
Removal and installation of the engine	2000	7-28220GB
Radiator and oil-cooler	2001	7-28040GB
Engine specifications	*	
Disassembly and assembly of the engine	*	
3 FUEL SYSTEM		
Fuel tank	3001	7-27970GB
Fuel engine system	*	
4 ELECTRICAL SYSTEM		
Electrical system, electrical and electronic troubleshooting	4001	7-27724GB
Inspection and maintenance of batteries and connecting a booster battery	4002	7-27921GB
Main and engine electronic control boxes	4003	7-27933GB
5 UNDERCARRIAGE		
Removal and installation of tracks	5001	7-27750GB
Removal and installation of a set of rubber tracks	5002	7-27760GB
Rollers	5003	7-27772GB
Sprocket	5004	7-27781GB
Idler wheel and tension shock absorber	5005	7-27803GB
6 DRIVE TRAIN		
Drive motor and final drive transmission removal and installation	6001	7-27841GB
Drive motor and final drive transmission disassembly and assembly	6002	7-28750GB
Swing reduction gear, removal and installation	6003	7-27830GB
Swing reduction gear, disassembly and assembly	6004	7-28000GB
7 UNDERCARRIAGE HYDRAULICS		
8 UPPERSTRUCTURE HYDRAULICS		
Depressurising and decontaminating the hydraulic system, use of the vacuum pump and bleeding the components	8000	7-27952GB
Specifications, troubleshooting, checks and hydraulic pressure settings	8001	7-27704GB
Hydraulic reservoir removal and installation	8002	7-27990GB
Main and pilot pumps, removal and installation	8003	7-27871GB
Main hydraulic control valve, removal and installation	8004	7-27880GB
Attachment cylinders, removal and installation	8005	7-27791GB
Hydraulic swivel, removal and installation	8006	7-27811GB
Pilot blocs, removal and installation	8007	7-28100GB
Swing motor, removal and installation	8008	7-28060GB
Main hydraulic pump, disassembly and assembly	8010	7-29770GB
Main hydraulic control valve, disassembly and assembly	8011	7-28200GB
Attachment cylinders, disassembly and assembly	8012	7-27902GB
Hand control levers, disassembly and assembly	8013	7-28110GB
Foot control levers, disassembly and assembly	8014	7-28300GB
Six-solenoid valves, disassembly and assembly	8015	7-27911GB
Caution valve, disassembly and assembly	8016	7-27942GB
Safety valve	8017	7-29631GB
Hydraulic swivel, disassembly and assembly	8018	7-28080GB
Swing motor, disassembly and assembly	8019	7-28011GB
Hydraulic functions	8020	7-28481GB

DIMENSIONS AND LIMIT OF WEAR AND TEAR OF THE MOBILE JOINTS OF THE ATTACHMENT



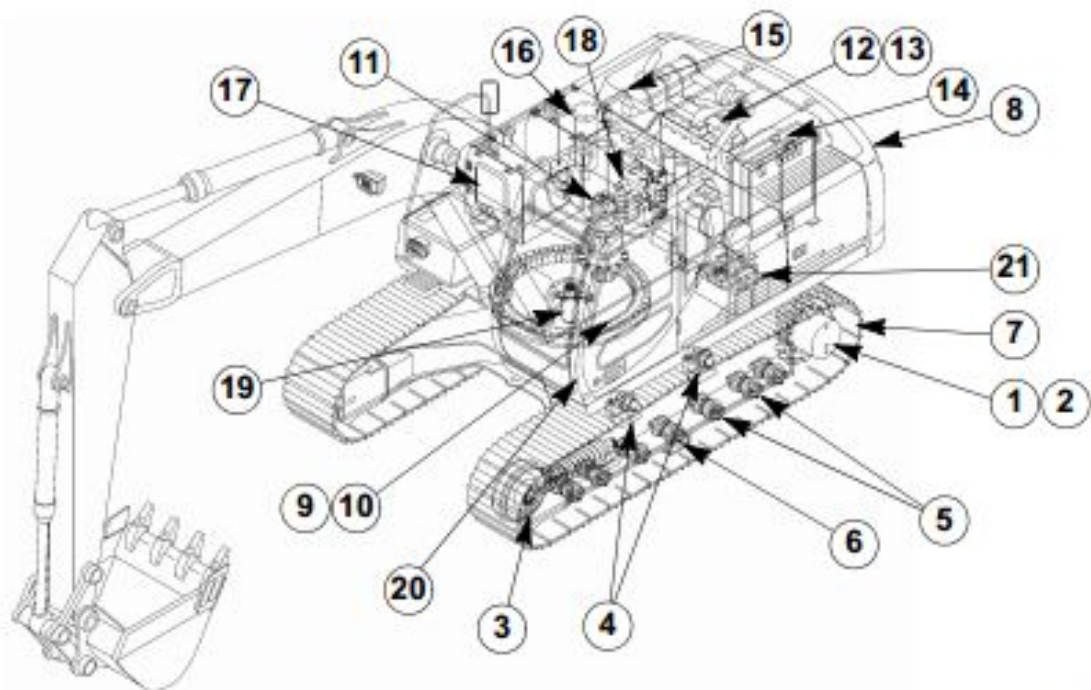
C5018501

1. Boom foot/Undercarriage

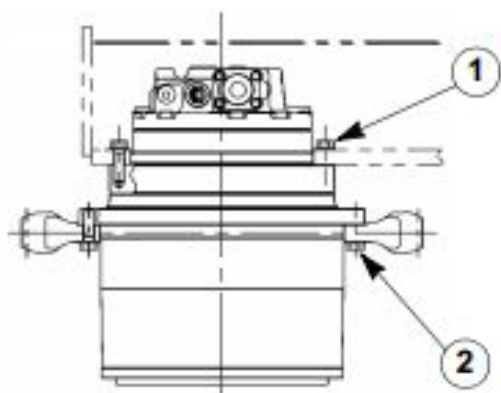


C5018502

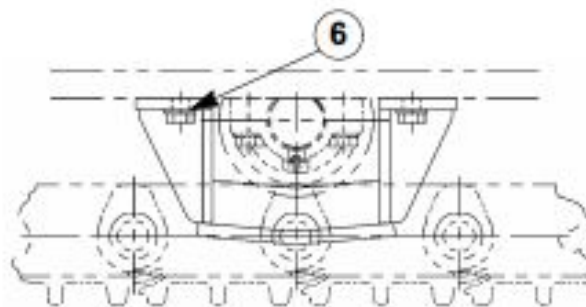
Marking		Dimension (mm)	
		CX130LC CX130LR	CX160 CX180
a	Standard	569	632
	Limit	579	642
b	Standard	568.5	631
	Limit	566.5	629
c (a - b)	Standard	0.5 to 3	0.5 à 3
	Limit	Shims	Shims
Ø d (pin)	Standard	75	80
	Limit	76.5	79
Ø d (ring)	Standard	75	80
	Limit	74	81.5



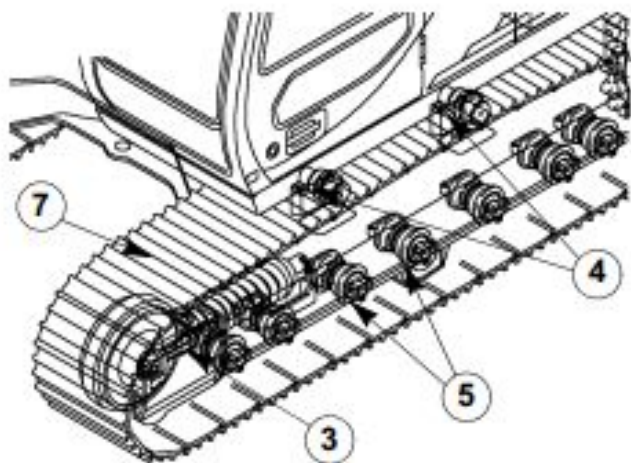
C500E507



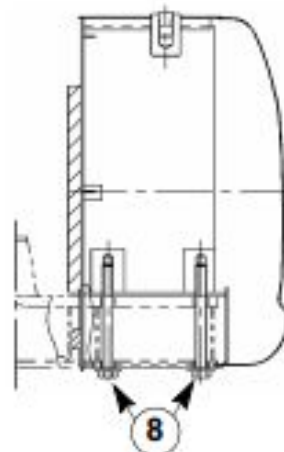
C500E508



C500E509



C500E510



C500E511



Thank you very much
for your reading.
Please click here
to get more information.