



PDF



DOWNLOAD

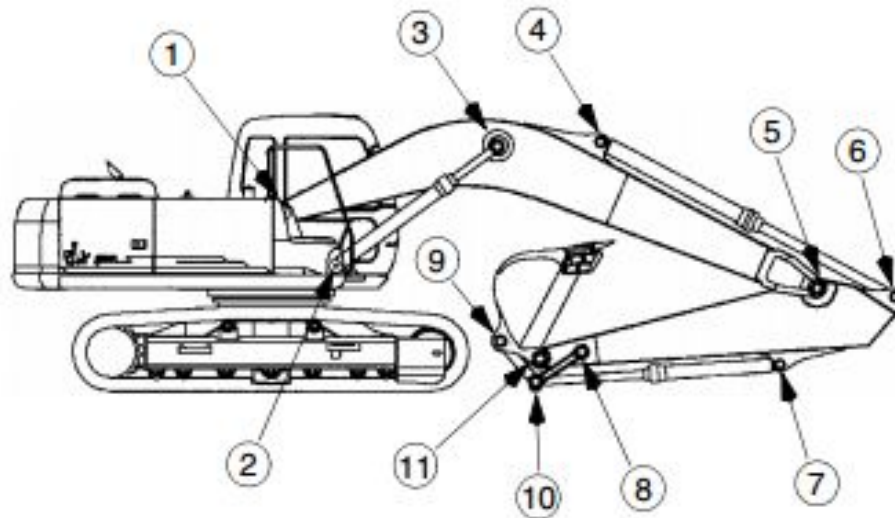


CX330 and CX350 Crawler Excavators

Table of Contents

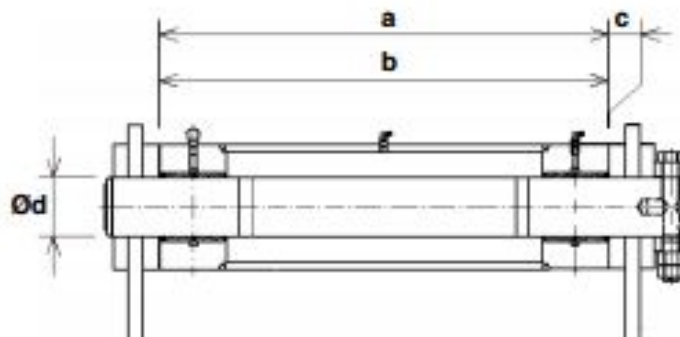
DIVISION/SECTION	SECTION N°	REFERENCE N°
1 GENERAL INFORMATION		
Safety, general information and standard torque data	1001	7-27690GB
General specifications and special torque setting	1002	9-36450GB
2 ENGINE		
Removal and installation of the engine	2000	9-43540GB
Radiator and oil-cooler	2001	9-43480GB
Engine specifications	*	
Disassembly and assembly of the engine	*	
3 FUEL SYSTEM		
Fuel tank	3001	9-43470GB
Fuel engine system	*	
4 ELECTRICAL SYSTEM		
Electrical system, electrical and electronic troubleshooting	4001	9-40950GB
Inspection and maintenance of batteries and connecting a booster battery	4002	9-43460GB
Main and engine electronic control boxes	4003	9-43450GB
5 UNDERCARRIAGE		
Removal and installation of tracks	5001	9-42910GB
Rollers	5003	9-42920GB
Sprocket	5004	9-36890GB
Idler wheel and tension shock absorber	5005	9-43000GB
6 DRIVE TRAIN		
Drive motor and final drive transmission removal and installation	6001	9-43140GB
Swing reduction gear, removal and installation	6003	9-43210GB
Swing reduction gear, disassembly and assembly	6004	9-43220GB
Travel reduction gear assembly and disassembly	6005	9-43150GB
7 UNDERCARRIAGE HYDRAULICS		
8 UPPERSTRUCTURE HYDRAULICS		
Depressurising and decontaminating the hydraulic system, use of the vacuum pump and bleeding the components	8000	9-43500GB
Specifications, troubleshooting, checks and hydraulic pressure settings	8001	9-36260GB
Hydraulic reservoir removal and installation	8002	9-43230GB
Main and pilot pumps, removal and installation	8003	9-43530GB
Main hydraulic control valve, removal and installation	8004	9-43260GB
Attachment cylinders, removal and installation	8005	9-43250GB
Hydraulic swivel, removal and installation	8006	9-43390GB
Pilot blocs, removal and installation	8007	9-43400GB
Swing motor, removal and installation	8008	9-43200GB
Main hydraulic pump, disassembly and assembly	8010	9-43240GB
.....	8010	9-43330GB
Main hydraulic control valve, disassembly and assembly	8011	9-43550GB
Attachment cylinders, disassembly and assembly	8012	9-43320GB
Hand control levers, disassembly and assembly	8013	9-43340GB
Foot control levers, disassembly and assembly	8014	7-28300GB
Six-solenoid valves, disassembly and assembly	8015	9-43360GB
Caution valve, disassembly and assembly	8016	7-27942GB
Safety valve	8017	9-43380GB
Hydraulic swivel, disassembly and assembly	8018	9-43190GB
Swing motor, disassembly and assembly	8019	9-43440GB
Hydraulic functions	8020	9-42740GB
Travel hydraulic motor, disassembly and assembly	8021	9-43160GB

DIMENSIONS AND WEAR LIMITS OF ATTACHMENT LINKAGES



C5018521

1. Boom foot/Frame



C5018522

Mark		Dimension (mm)
a	Standard	860
	Limit	868
b	Standard	859
	Limit	857
c (a - b)	Standard	1.5 to 4
	Limit	Shims
Ø d (shaft)	Standard	110
	Limit	109
Ø d (bushing)	Standard	110
	Limit	111.5

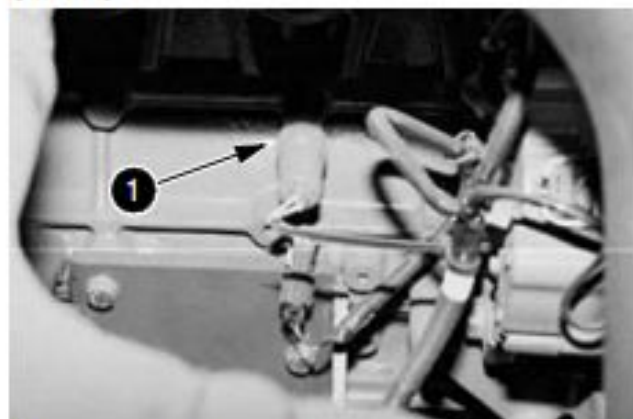
STEP 8



CD02C152

Label and disconnect the electrical connections from the water temperature sensor (1).

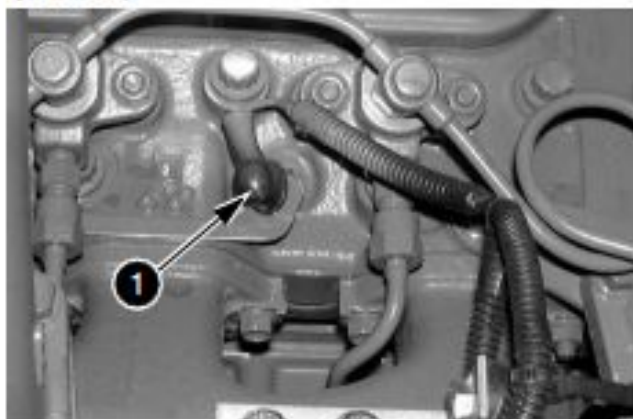
STEP 9



CD02C153

Label and disconnect the electrical connections from the oil pressure sensor (1).

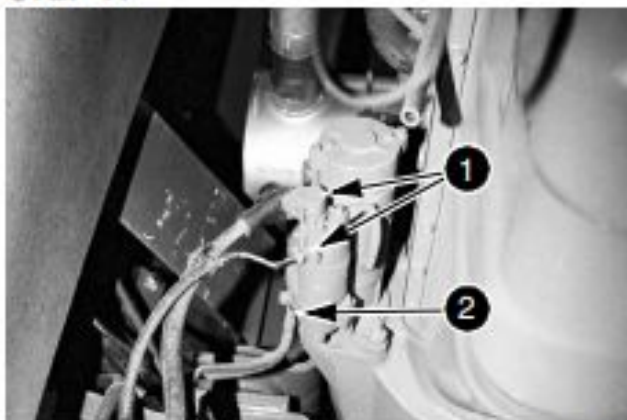
STEP 10



CD00J000

Label and disconnect the electrical supply (1) to the pre-heating plugs.

STEP 11



CD02C154

Label and disconnect the electrical connections to the starter motor (1). Remove the earth cable (2) at the engine end.

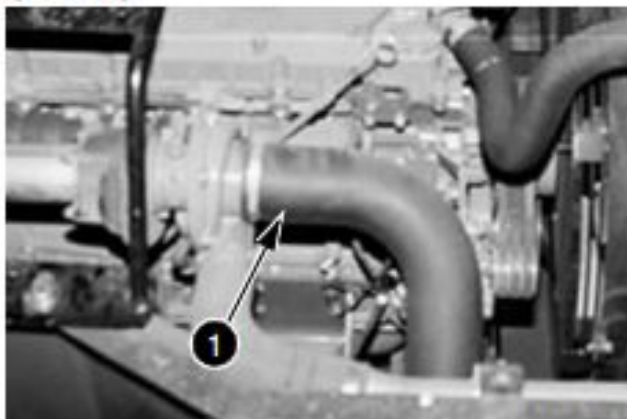
STEP 12



CD02C152

Label and disconnect the electrical connections of the electronic regulation (1) from the engine.

STEP 13



CD02C155

Remove the hose connecting the turbo-charger to the air filter (1).



Thank you very much
for your reading.
Please click here
to get more information.