

**310G,310SG and 315SG  
BACKHOE LOADERS**



**JOHN DEERE**

**PARTS CATALOG**

**310G,310SG and 315SG  
BACKHOE LOADERS**

**PC2755 (Jan-07) English**



**Worldwide Construction and Forestry Division**

Worldwide Edition  
Litho In U.S.A. (Revised)  
DEERE & COMPANY  
Moline, Illinois

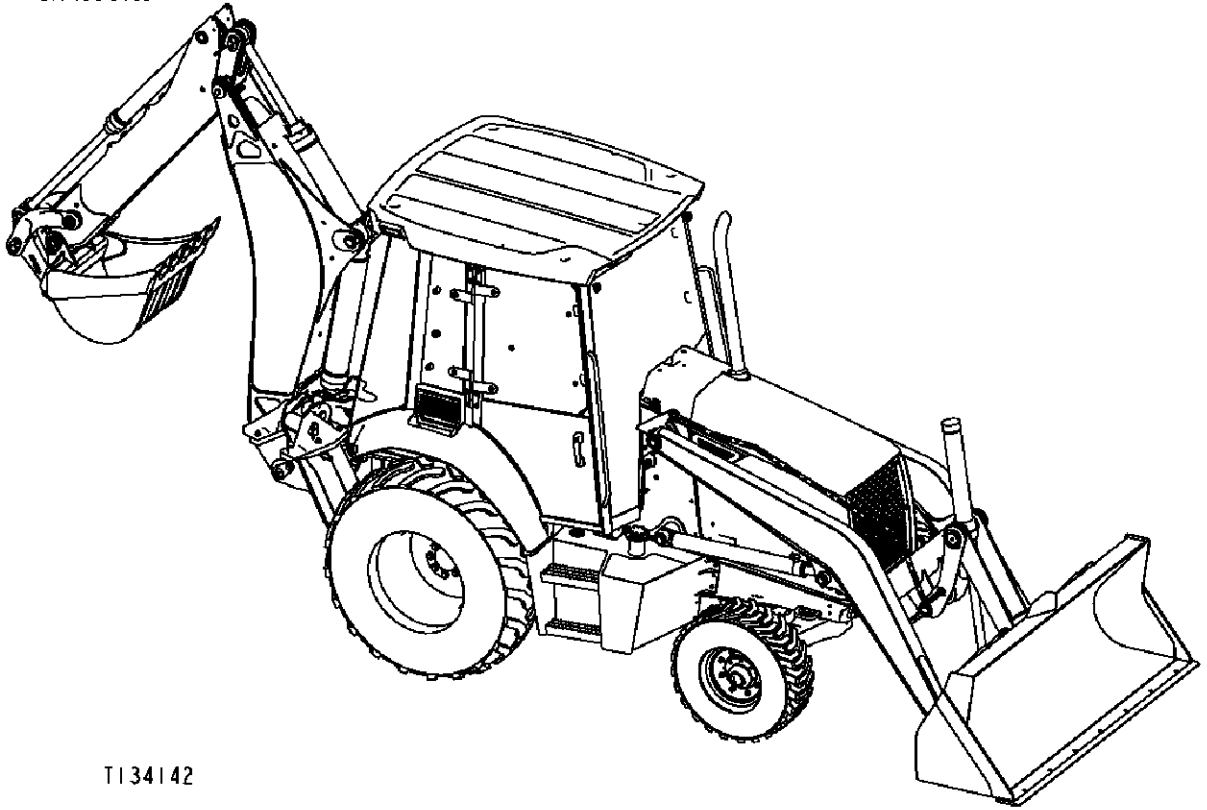


# 000I-1

310G, 310SG AND 315SG BACKHOE LOADERS

## INTRODUCTION AND CUSTOMER INFORMATION

T134142 -UN-10OCT00



T134142

## SERIAL NUMBER LOCATIONS

EACH 310G, 310SG AND 315SG BACKHOE LOADER HAS SIX SERIAL NUMBERS, A PRODUCT IDENTIFICATION NUMBER PLATE, AN ENGINE SERIAL NUMBER PLATE, A HYDRAULIC PUMP SERIAL NUMBER PLATE, A MFWD AXLE SERIAL NUMBER PLATE, A TRANSMISSION SERIAL NUMBER PLATE, AND A REAR AXLE SERIAL NUMBER PLATE.

THE PRODUCT IDENTIFICATION NUMBER IS ON THE LEFT-HAND SIDE OF THE LOADER FRAME JUST ABOVE THE LIFT CYLINDER PIVOT BOSS.

THE ENGINE SERIAL NUMBER PLATE IS LOCATED ON THE RIGHT-HAND SIDE OF THE CYLINDER BLOCK NEAR THE FUEL PUMP.

THE MFWD AXLE SERIAL NUMBER PLATE IS LOCATED ON THE RIGHT-HAND (REAR) SIDE OF THE MFWD AXLE HOUSING.

THE REAR AXLE SERIAL NUMBER PLATE IS LOCATED ON THE RIGHT-HAND (FRONT) SIDE OF THE AXLE HOUSING.

THE TRANSMISSION SERIAL NUMBER PLATE IS LOCATED ON THE BOTTOM-REAR FACE OF THE HOUSING.

THE HYDRAULIC PUMP SERIAL NUMBER IS LOCATED ON THE BOTTOM FACE OF THE PUMP.

LEFT-HAND SIDE, RIGHT-HAND SIDE, FRONT AND REAR OF THE BACKHOE LOADER ARE VIEWED BY FACING IN THE DIRECTION OF THE BACKHOE LOADER FORWARD TRAVEL.

LEFT-HAND SIDE, RIGHT-HAND SIDE, FRONT AND REAR OF THE BACKHOE COMPONENTS ARE DETERMINED WHEN SEATED IN THE BACKHOE OPERATING POSITION.

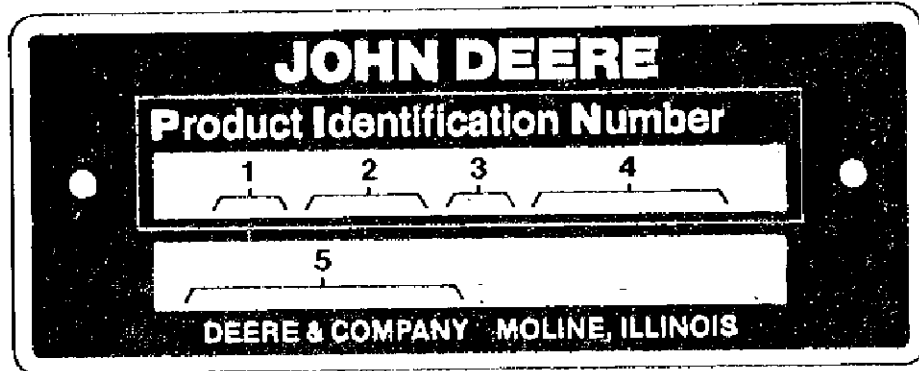
IF PRODUCT IDENTIFICATION NUMBERS OR SERIAL NUMBERS ARE REQUIRED FOR WARRANTY CLAIMS OR CORRESPONDENCE PERTAINING TO THIS PRODUCT, IT IS EXTREMELY IMPORTANT THAT ALL CHARACTERS BE FURNISHED. THIS POINT CANNOT BE OVEREMPHASIZED.

# 0001-3

310G, 310SG AND 315SG BACKHOE LOADERS

## PRODUCT IDENTIFICATION NUMBER

TP16004 -UN-01JAN94



TP16004

- |  |                                  |
|--|----------------------------------|
| 1. DESIGNATES BACKHOE MANUFACTURER         | T0 - JOHN DEERE DUBUQUE WORKS    |
| 2. DESIGNATES BACKHOE MODEL                | BE - BELL EQUIPMENT SOUTH AFRICA |
| 3. DESIGNATES BACKHOE CONFIGURATION        | 315                              |
| 4. DESIGNATES DUBUQUE WORKS SERIAL NUMBERS | SG                               |
| DESIGNATES BELL EQUIPMENT SERIAL NUMBERS   | 893079 THRU 948698               |
| 5. DESIGNATES UNIT TYPE                    | 200001 THRU XXXXXX               |
|  | BACKHOE LOADER                   |



Thank you very much  
for your reading.  
Please click here  
to get more information.