

John Deere 450K, 550K, 650K (SN.F305399-) Crawler Dozer Repair Technical Service Manual (TM14163X19)

450K, 550K, 650K Crawler Dozer Repair

(PIN: 1T0450KX__F304771—;
PIN: 1T0550KK__F305398—;
PIN: 1T0650KK__F305399—)



JOHN HARE



COLLECTION

REPAIR TECHNICAL MANUAL

450K, 550K, 650K Crawler Dozer
(PIN: 1T0450KX__F304771—; PIN: 1T0550KK__F305398—;
PIN: 1T0650KK__F305399—)

TM14163X19 01DEC18 (ENGLISH)

For complete service information also see:

450K, 550K, 650K Crawler Dozer Operation and Test..... TM14162X19
4045 PowerTech 4-Valve Diesel Engine (P55—PMS—)..... 120119
PWL)(Final Tier 4/Stage IV platform) Level 3..... 120119
Hydraulic Cylinders..... 120119



Worldwide Construction and
Forestry Division

Covers: 450K,1T0450KX__,_F304771 (◆◆◆◆◆◆◆◆),550K,1T0550KK__,_F305398

Type: Service Manual

Language: English

Pages: 389

Format: PDF

Features: Bookmarked, searchable, printable

Compatibility: Windows/Mac/Tablet/Mobile

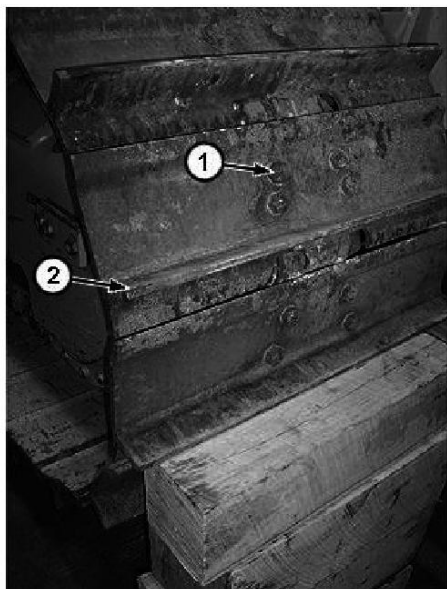
This service manual contains important information for the maintenance, troubleshooting and servicing of the **John Deere 450K, 550K, 650K (SN.F305399-) Crawler Dozer Repair Technical Service Manual (TM14163X19)**

In this manual you will find detailed specifications, illustrations, schematics, diagrams and step-by-step procedures to properly service and diagnose the machine to the manufacturer's standards.

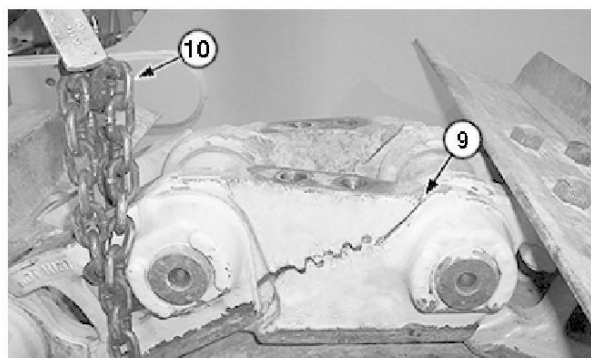
Contents:

- General Information
- Specifications
- Serial Number Location
- Engine Specifications
- Engine Diagnostics
- Engine Tests and Adjustments
- Engine Repair
- Power Train
- Transmission
- Axles
- Differential
- PTO
- Hydraulic System
- Electrical System
- Electrical Tests and Diagnostics
- Wiring Diagram / Schematic
- Ignition and Charging
- Steering
- Brakes
- Wheels
- Operator's Platform
- Body Panels
- Disassembly and Assembly
- Diagnostics, Tests and Adjustments
- Troubleshooting
- and much more...

Please note this manual is in **downloadable PDF format only**. If you have any questions about this product or would like to request sample pages, please contact us and reference the product name or SKU.



3. T211292A-UN: Track Shoe



TX1098970A-UN: Split Chain Link

LEGEND:

- 1-Cap Screw (4 used)
- 2-Track Shoe
- 9-Split Link
- 10-Chain

Rotate track until split link (9) is positioned in front of idler.

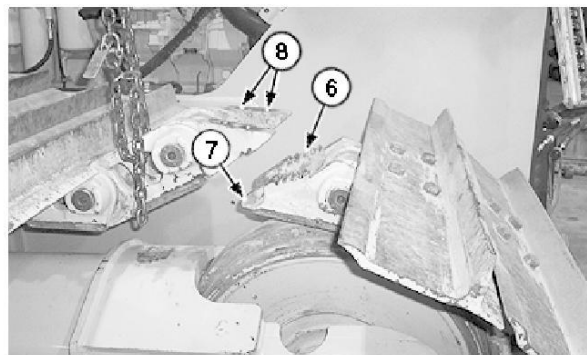
4. To prevent track from falling, block track as shown.
5. Remove four cap screws (1) to remove track shoe (2) and disassemble split link.
6. Attach chain (10) to track and support track chain with hoist to avoid damage to split link.
7. Start machine and slowly rotate drive sprocket in reverse direction to move track off drive sprocket.

IMPORTANT:

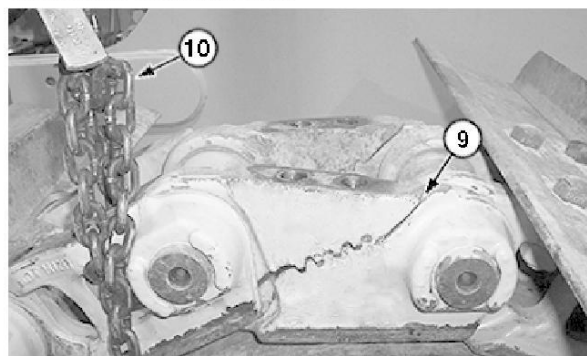
8. **Track chain must be installed under track frame with wide end of links toward rear of machine or accelerated wear to track chain will occur.**

Install track chain by putting chain under track frame with the wide end of links toward rear of machine.

9. Block track shoes so split link is positioned directly over idler.



10. TX1098969A-UN: Track Chain Installation



TX1098970A-UN: Align Split Link

LEGEND:

- 6-Ramp Surface (4 used)
- 7-Tip of Split Link Ramp
- 8-Cap Screw Hole (4 used)
- 9-Split Link
- 10-Chain

Attach chain (10) and hoist near end of track chain for support.

11. Guide track over sprocket while operator drives machine slowly forward guiding track chain over carrier rollers and front idler.
12. Stop machine when ends of split links meet.
13. Remove any foreign material from split link tooth racks and ramp surfaces (6). Clean surface with wire brush if necessary.
14. Check for burrs, especially at tip of split link ramp (7). Remove all burrs so ramp surfaces are flat.
15. Check cap screw holes (8) in each split link. Cap screw holes must be clean and free of foreign material.

IMPORTANT:

16. **To prevent damage to threads, do not use a pry bar in holes to align split link.**

Carefully align split links together and align cap screw holes.



Thank you very much
for your reading.
Please click here
to get more information.