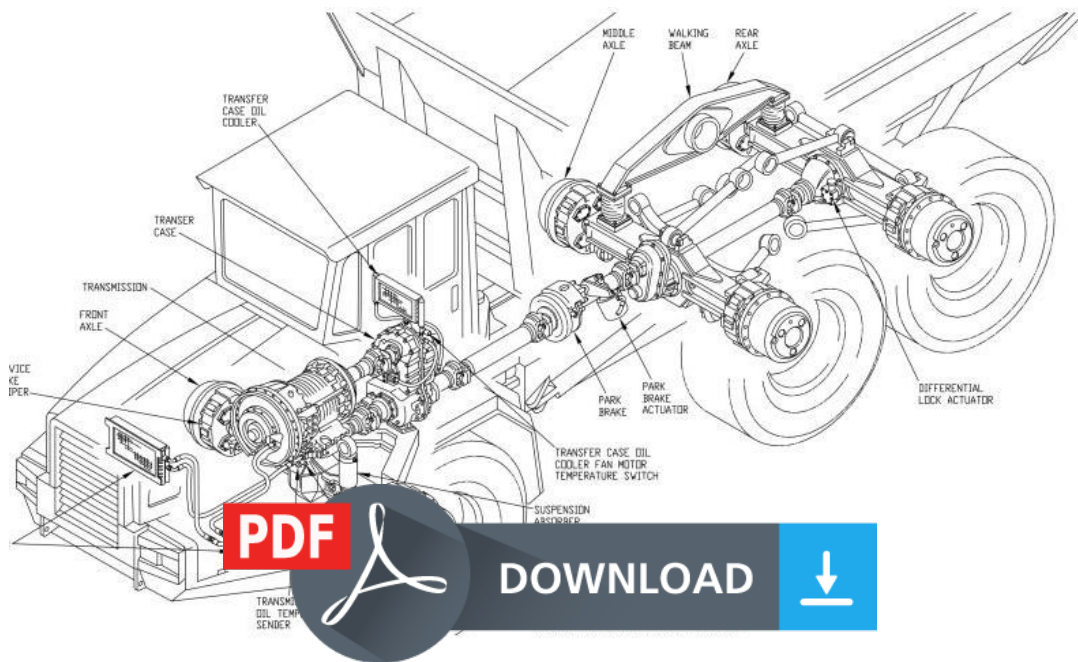


John Deere BELL B35C and B40C Articulated Dump Truck Diagnostic, Operation and Test Service Manual - TM1815



Covers: B35C,B40C

Type: Service Manual

Language: English

Pages: 699

Format: PDF

Features: Bookmarked, searchable, printable

Compatibility: Windows/Mac/Tablet/Mobile

This service manual contains important information for the maintenance, troubleshooting and servicing of the **John Deere BELL B35C and B40C Articulated Dump Truck Diagnostic, Operation and Test Service Manual - TM1815**

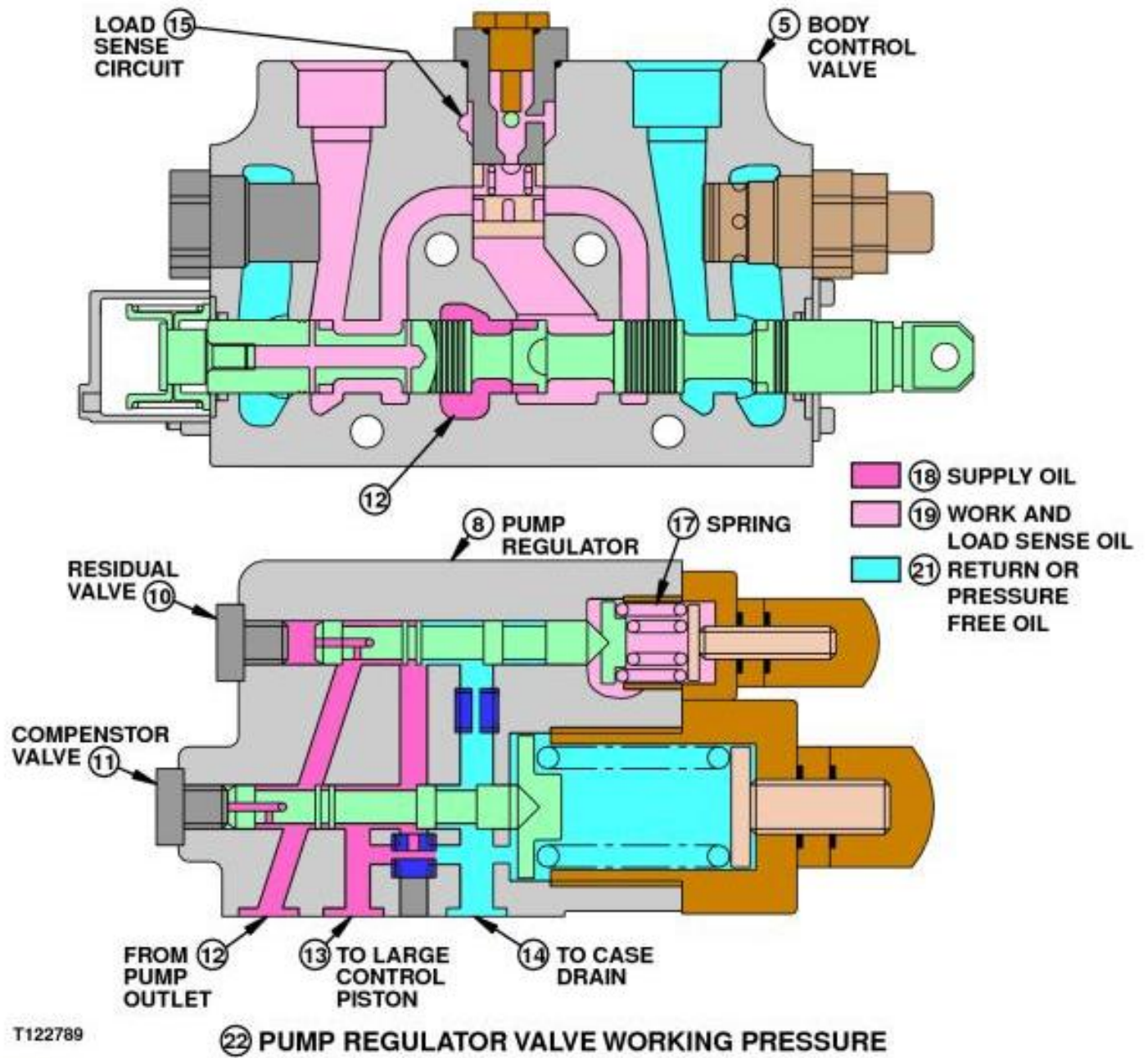
In this manual you will find detailed specifications, illustrations, schematics, diagrams and step-by-step procedures to properly service and diagnose the machine to the manufacturer's standards.

Contents:

- General Information
- Specifications
- Serial Number Location
- Engine Specifications
- Engine Diagnostics
- Engine Tests and Adjustments
- Engine Repair
- Power Train
- Transmission
- Axles
- Differential
- PTO
- Hydraulic System
- Electrical System
- Electrical Tests and Diagnostics
- Wiring Diagram / Schematic
- Ignition and Charging
- Steering
- Brakes
- Wheels
- Operator's Platform
- Body Panels
- Disassembly and Assembly
- Diagnostics, Tests and Adjustments
- Troubleshooting
- and much more...

Please note this manual is in **downloadable PDF format only**. If you have any questions about this product or would like to request sample pages, please contact us and reference the product name or SKU.

Working Pressure



T122789

22 PUMP REGULATOR VALVE WORKING PRESSURE

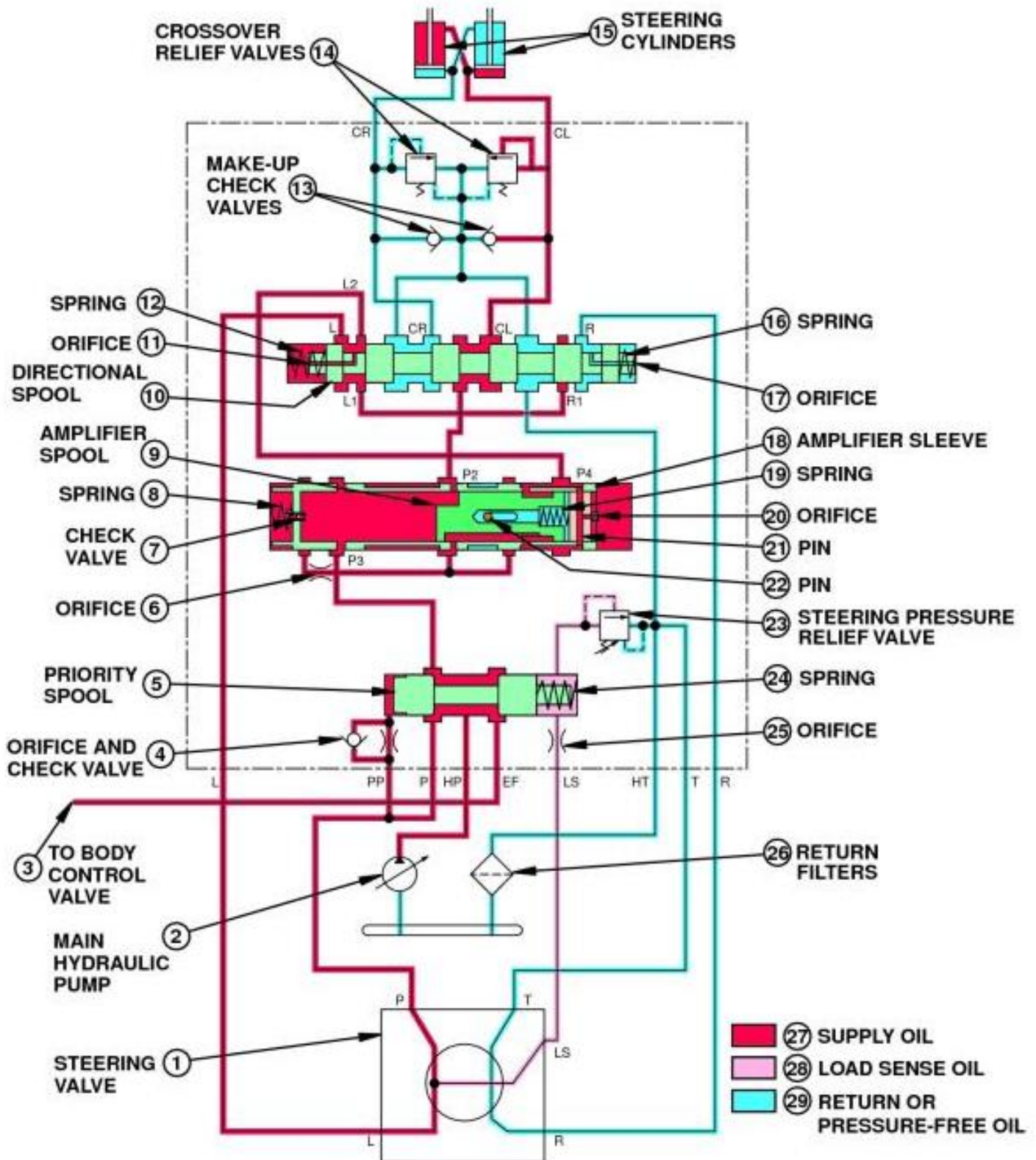
Pump Regulator Valve Working Pressure

LEGEND:

- 1 Steering Valve
- 2 Steering Cylinders
- 3 Flow Amplifier Valve
- 4 Body Cylinder
- 5 Body Control Valve
- 6 System Relief Valve
- 7 Shuttle Valve
- 8 Pump Regulator
- 9 Main Hydraulic Pump
- 10 Residual Valve
- 11 Compensator Valve
- 12 From Pump Outlet
- 13 To Large Control Piston
- 14 To Case Drain
- 15 Load Sense Valve
- 16 Steering Load Sense Circuit
- 17 Spring
- 18 Supply Oil

The steering pressure relief valve (23) is used to release high pressure oil when the steering is stalled against a frame stop or is overloaded. The increased pressure opens the relief valve allowing oil to flow to the hydraulic reservoir via the port HT.

Flow Amplifier Valve Left Turn



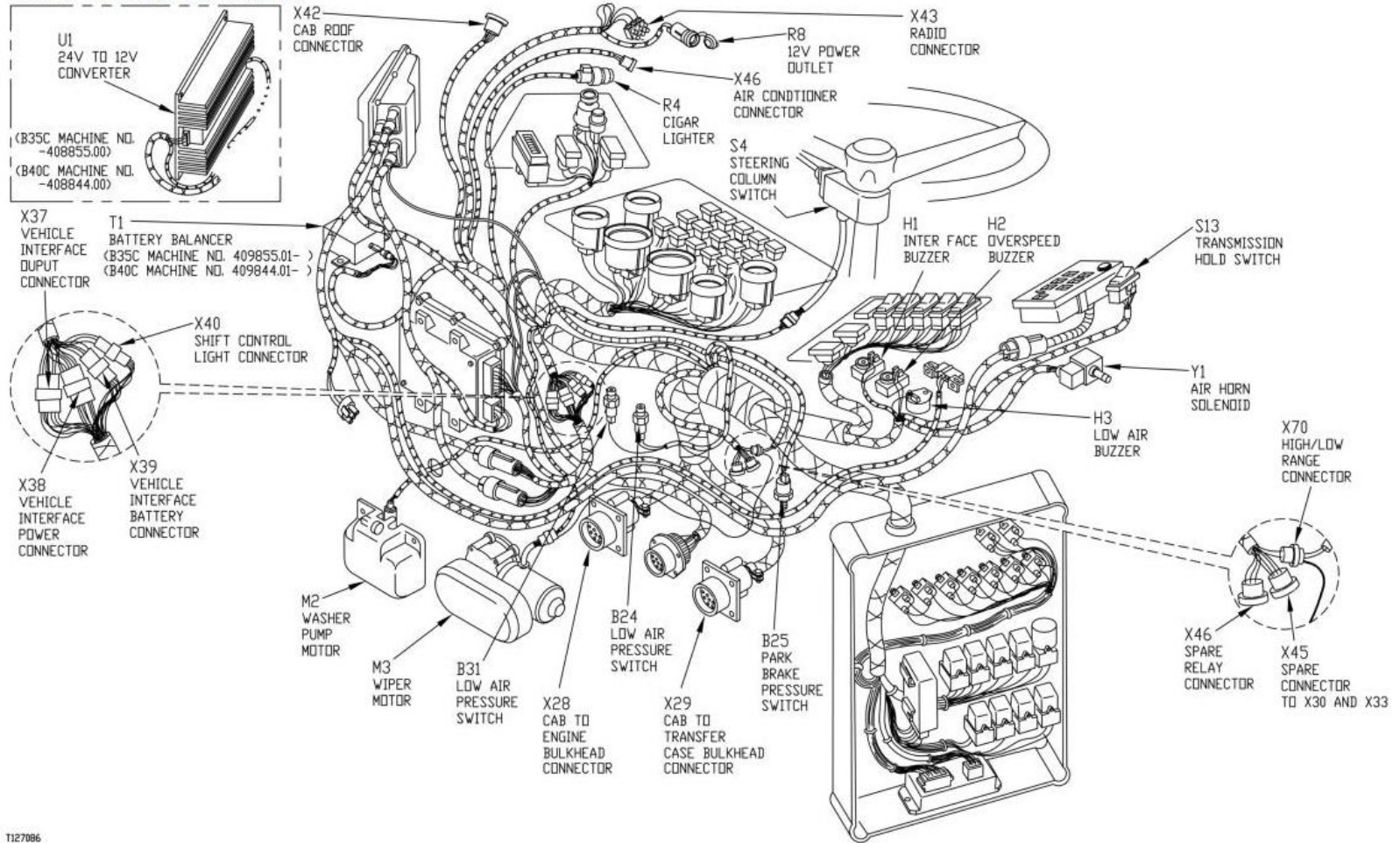
30 FLOW AMPLIFIER VALVE LEFT TURN

Flow Amplifier Valve Left Turn

LEGEND:

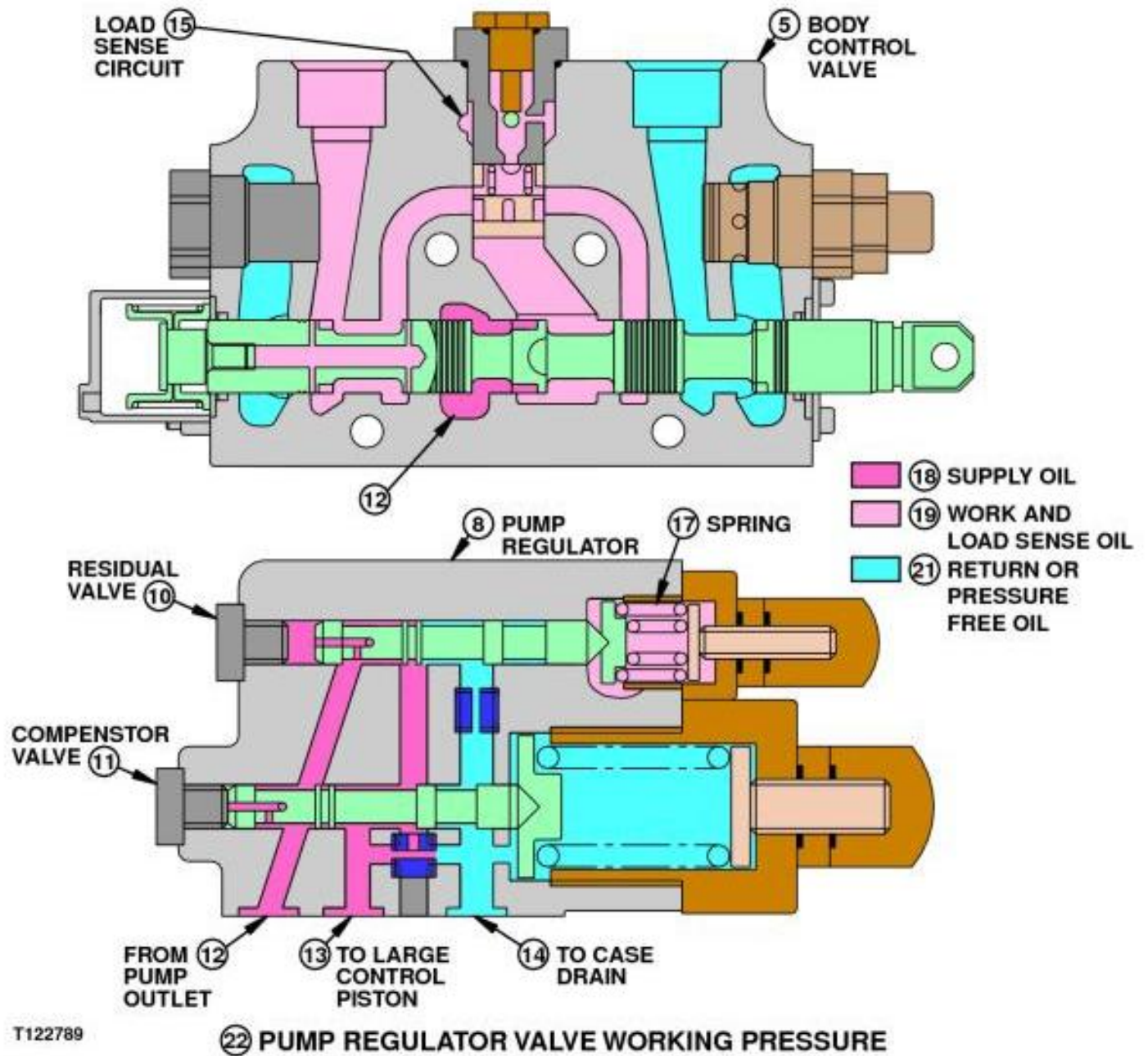
1 Steering Valve

Cab Harness (W5) Component Location (1 of 4)



T127086
Cab Harness (W5) Component Location (1 of 4)

Working Pressure



T122789

22 PUMP REGULATOR VALVE WORKING PRESSURE

Pump Regulator Valve Working Pressure

LEGEND:

- 1 Steering Valve
- 2 Steering Cylinders
- 3 Flow Amplifier Valve
- 4 Body Cylinder
- 5 Body Control Valve
- 6 System Relief Valve
- 7 Shuttle Valve
- 8 Pump Regulator
- 9 Main Hydraulic Pump
- 10 Residual Valve
- 11 Compensator Valve
- 12 From Pump Outlet
- 13 To Large Control Piston
- 14 To Case Drain
- 15 Load Sense Valve
- 16 Steering Load Sense Circuit
- 17 Spring
- 18 Supply Oil



Thank you very much
for your reading.
Please click here
to get more information.