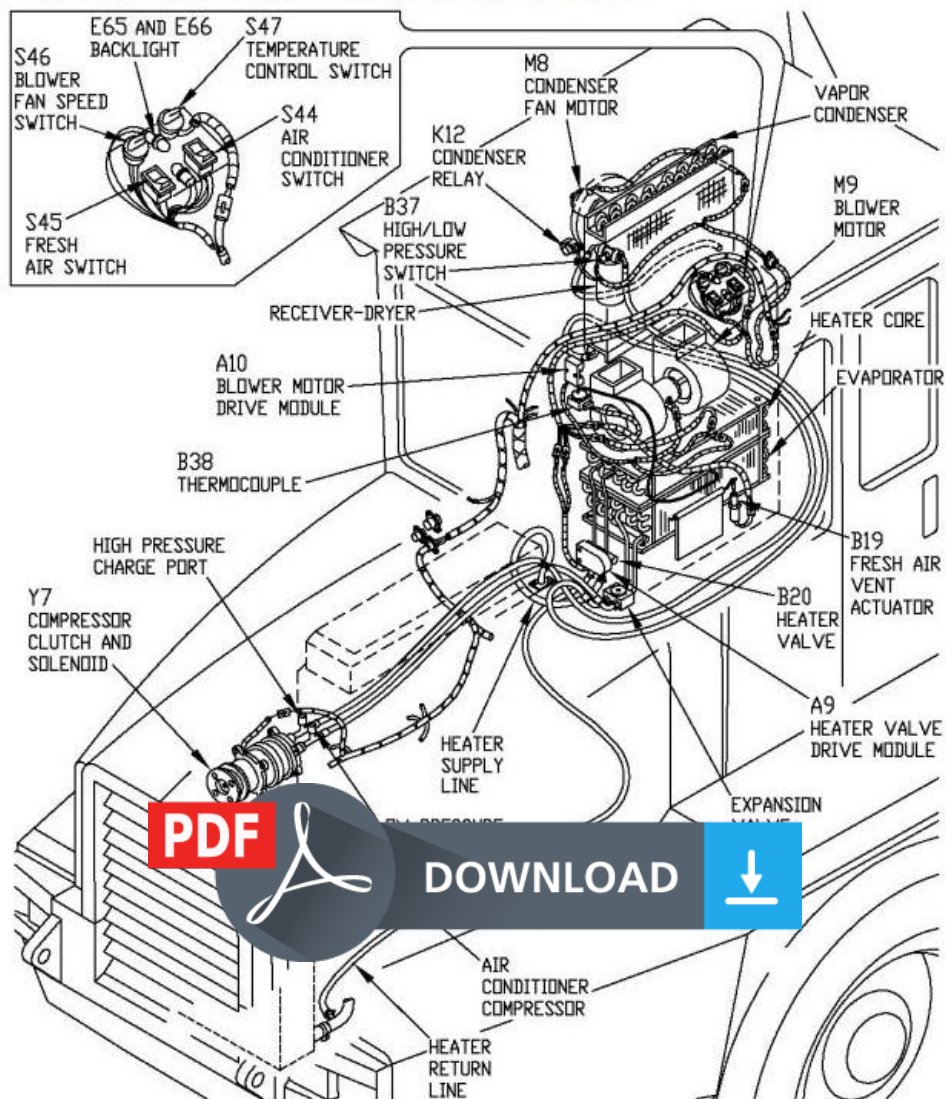


John Deere Bell B25C Articulated Dump Truck Service Repair Technical Manual (tm1812)

Section 18 - OPERATOR'S STATION Group 1830: Heating and Air Conditioning

Heater and Air Conditioner Component Location



T123893

HEATER AND AIR CONDITIONER COMPONENT LOCATION

Heater and A/C Component Location

Remove and Install Air Conditioning and Heater Controls

[1] -

Type: Service Manual

Language: English

Pages: 847

Format: PDF

Features: Bookmarked, searchable, printable

Compatibility: Windows/Mac/Tablet/Mobile

This service manual contains important information for the maintenance, troubleshooting and servicing of the **John Deere Bell B25C Articulated Dump Truck Service Repair Technical Manual (tm1812)**

In this manual you will find detailed specifications, illustrations, schematics, diagrams and step-by-step procedures to properly service and diagnose the machine to the manufacturer's standards.

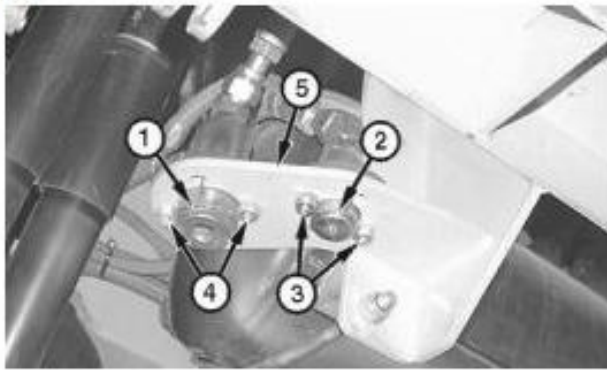
Contents:

- General Information
- Specifications
- Serial Number Location
- Engine Specifications
- Engine Diagnostics
- Engine Tests and Adjustments
- Engine Repair
- Power Train
- Transmission
- Axles
- Differential
- PTO
- Hydraulic System
- Electrical System
- Electrical Tests and Diagnostics
- Wiring Diagram / Schematic
- Ignition and Charging
- Steering
- Brakes
- Wheels
- Operator's Platform
- Body Panels
- Disassembly and Assembly
- Diagnostics, Tests and Adjustments
- Troubleshooting
- and much more...

Please note this manual is in **downloadable PDF format only**. If you have any questions about this product or would like to request sample pages, please contact us and reference the product name or SKU.

Remove and Install Engine

[1] -



LEGEND:

- 1 Engine Oil Drain Hose Assembly
- 2 Transmission Oil Drain Hose Assembly
- 3 Cap Screw and Nut (2 used)
- 4 Cap Screw and Nut (2 used)
- 5 Bracket

Drain Hose Removal

Remove cab. (See Remove and Install Cab in Group 1800.)

[2] - Drain coolant and remove radiator. (See Remove and Install Radiator in Group 0510.)

[3] - Drain transmission oil. (See Remove and Install Transmission Oil Filters in Group 0350.)

[4] - Remove cap screws and nuts (3 and 4) and remove engine oil drain hose assembly (1) and transmission oil drain hose assembly (2) from bracket (5).

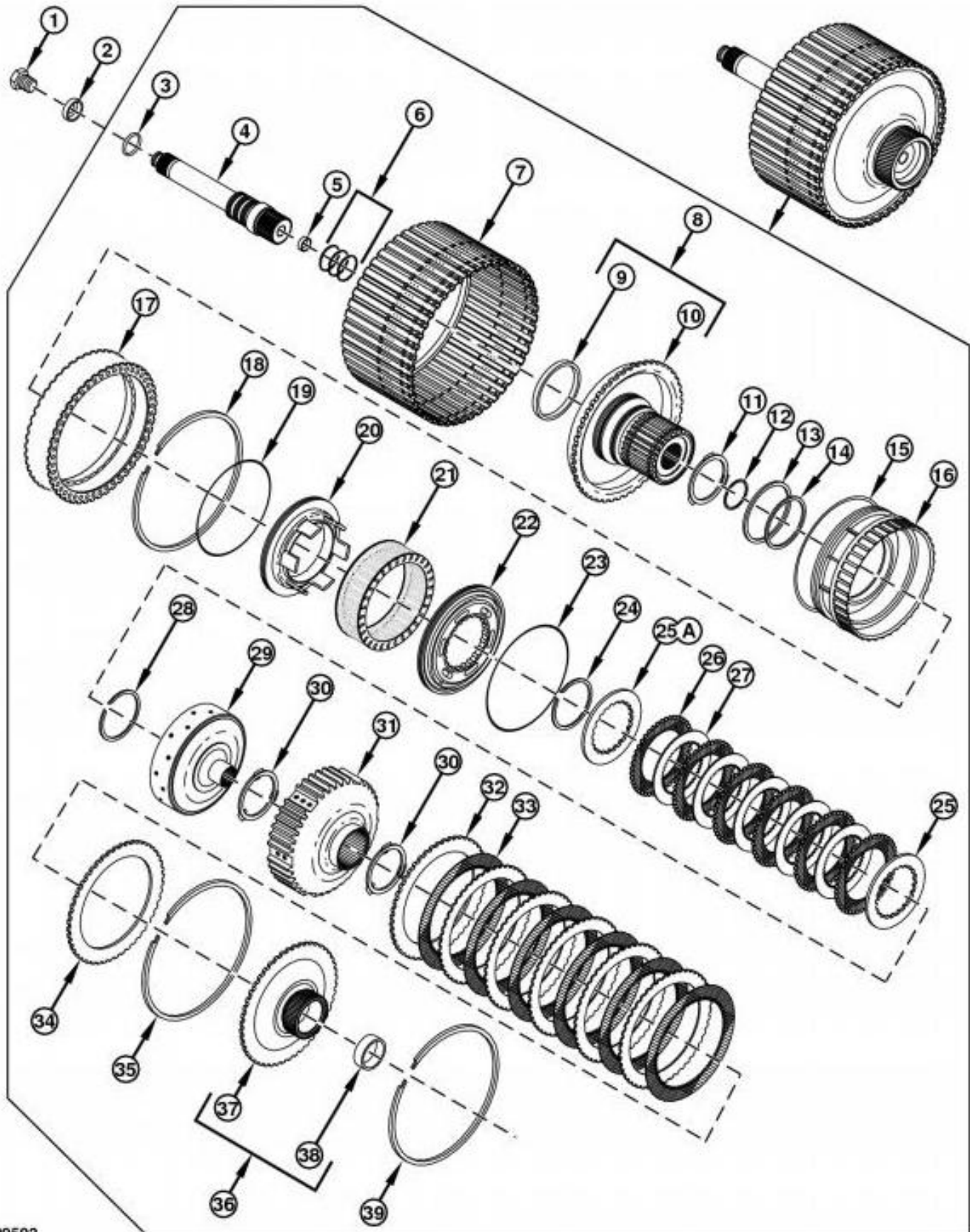
[5] - Fasten transmission oil drain hose to transmission and engine oil drain hose to engine with tie straps.

[6] -



Disassemble and Assemble C1/C2 Clutch

Disassemble C1/C2 Clutch

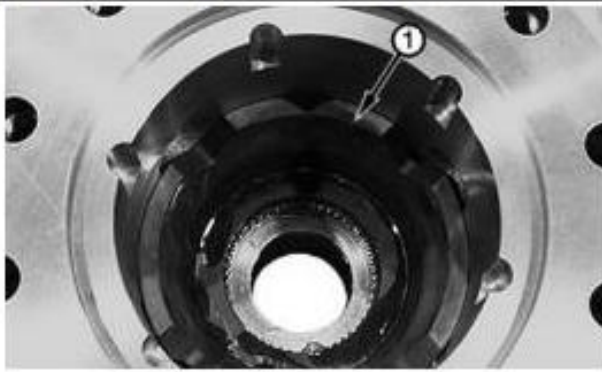


T129502

C1/C2 Clutch

LEGEND:

1 Cap Screw

**LEGEND:**

1 Bevel Gear Housing

Bevel Gear Housing

Install bevel gear housing (1) onto dowel pins.

[45] -

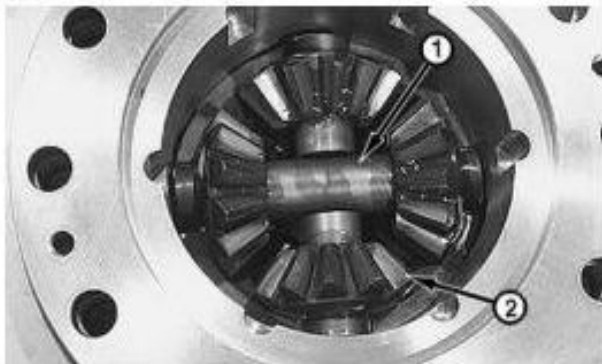
**LEGEND:**

1 Axle Bevel Gear

Bevel Gear

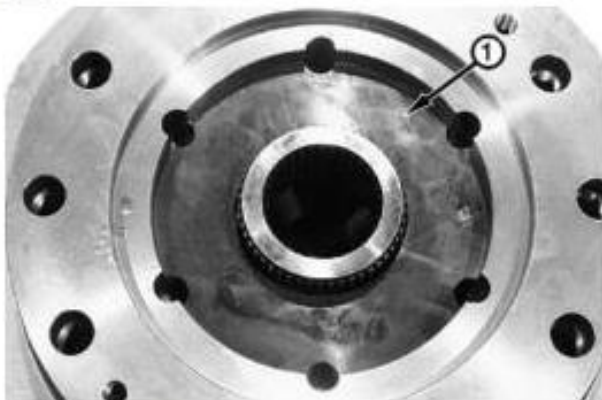
Install axle bevel gear (1). Ensure axle bevel gear engages both splined disks and contacts thrust washer.

[46] -

**LEGEND:**1 Pinion Cross Shaft (2 used)
2 Bevel Gear (4 used)**Bevel Gears and Pinion Cross Shaft**

Lubricate and install bevel gears (2) and pinion cross shafts (1) as an assembly.

[47] -

**LEGEND:**

1 Bevel Gear Housing



Thank you very much
for your reading.
Please click here
to get more information.