

John Deere 310SL Backhoe Loader Operator's Manual (OMT357554X19)

310SL Backhoe Loader
Operator's Manual



OPERATOR'S MANUAL

Backhoe Loaders models 310SL (PIN: 1T0310SL**C273920-;
1T0310SL**D273920-)

OMT357554X19 21 APR 15 (ENGLISH)



John Deere Construction and Forestry
Printed by Belgreen



OMT357554X19

Covers: 310SL,1T0310SL**C273920-;,1T0310SL**D273920-)

Type: Service Manual

Language: English

Pages: 329

Format: PDF

Features: Bookmarked, searchable, printable

Compatibility: Windows/Mac/Tablet/Mobile

This service manual contains important information for the maintenance, troubleshooting and servicing of the **John Deere 310SL Backhoe Loader Operator's Manual (OMT357554X19)**

In this manual you will find detailed specifications, illustrations, schematics, diagrams and step-by-step procedures to properly service and diagnose the machine to the manufacturer's standards.

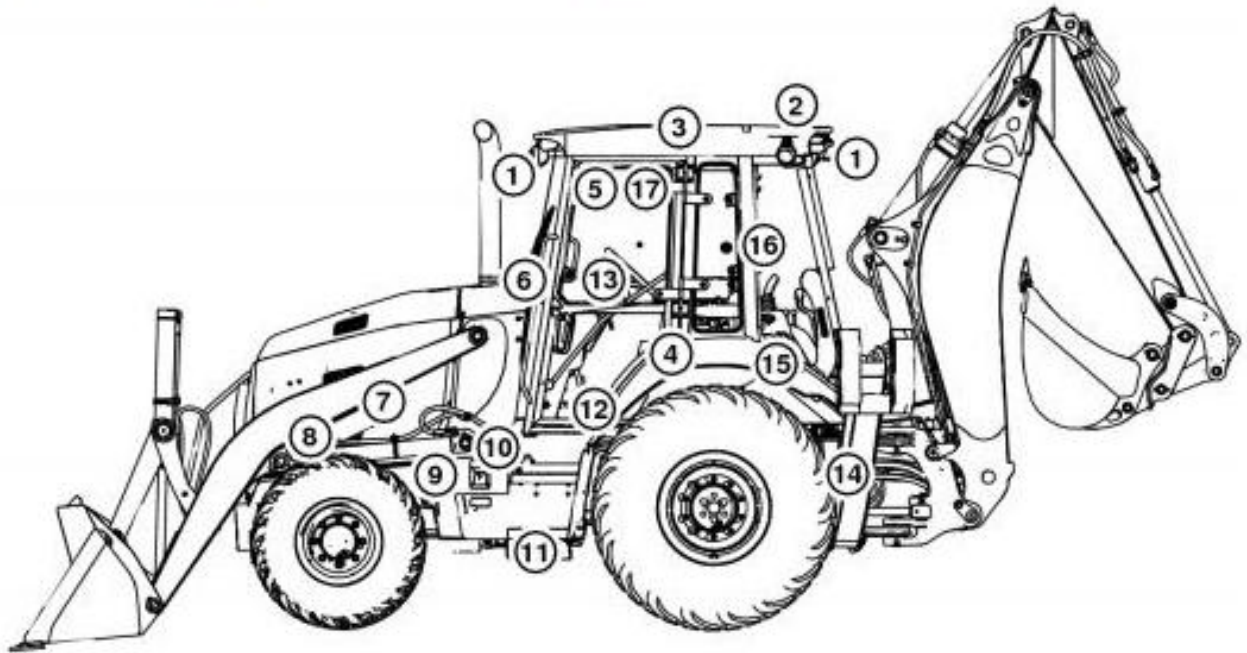
Contents:

- General Information
- Specifications
- Serial Number Location
- Engine Specifications
- Engine Diagnostics
- Engine Tests and Adjustments
- Engine Repair
- Power Train
- Transmission
- Axles
- Differential
- PTO
- Hydraulic System
- Electrical System
- Electrical Tests and Diagnostics
- Wiring Diagram / Schematic
- Ignition and Charging
- Steering
- Brakes
- Wheels
- Operator's Platform
- Body Panels
- Disassembly and Assembly
- Diagnostics, Tests and Adjustments
- Troubleshooting
- and much more...

Please note this manual is in **downloadable PDF format only**. If you have any questions about this product or would like to request sample pages, please contact us and reference the product name or SKU.

Group 1.1 - Safety and Operator Conveniences

Safety and Operator Convenience Features



TX1171172

Safety and Operator Conveniences

Please remember, the **operator** is the key to preventing accidents.

1. **Headlights/Taillights**— Two front drive/work lights and two rear work lights.
2. **Signal/Warning Lights**— Roof-mounted turning signal lights and warning lights for on-road use.
3. **Roll-Over Protection Structure (ROPS)**— Certified ROPS surrounds the operator. Integral roof provides overhead protection.
4. **Seat Position Sensor**— An audio/visual warning alerts operator when transmission control lever (TCL) is in forward/reverse and seat is turned toward backhoe position.
5. **Interior Rearview Mirror**— Mirror offers the operator a view of activity behind them.
6. **Handholds**— Large, conveniently placed handholds help operator to enter or exit the operator's station.
7. **Loader Boom Service Lock**— Loader boom service lock is provided for working on or around this machine with the boom raised.
8. **Engine Fan Guard**— A secondary engine fan guard inside engine compartment encloses rotating fan blades.
9. **Bypass Start Protection**— Shielding over the starter solenoid helps prevent dangerous bypass starting.
10. **Ground-Level Fueling**— Ground-level fueling feature eliminates the need to climb on the machine when fueling.
11. **Steps**— Wide, skid-resistant steps provide excellent footing for getting in/out of operator's station.
12. **Independent Parking/Secondary Brake**— Independent, electrically controlled parking brake electrically engages when the engine is stopped.
13. **Neutral Start**— The machine will not move until the transmission control lever (TCL) is cycled back to neutral and the park brake is released, regardless of TCL position at start-up.
14. **Backup Alarm**— Alarm alerts bystanders when the machine is shifted into reverse.
15. **Seat Belt Retractors**— Seat belt retractors help keep belts clean and convenient to use.
16. **Exceptional Visibility**— Views to either side, front, and rear working tools are unrestricted.
17. **Operator's Manual Holder**— A sealed manual holder keeps manual clean and dry.

[4] - After machine shutdown, move boom lock lever to release hydraulic pressure and put tension on boom lock.

Swing Lock Operation



LEGEND:

- 1 Swing Lock Pin
- 2 Swing Lock Mounting Hole

Storage Position



Swing Lock Mounting Hole

IMPORTANT:

To prevent possible machine damage, remove swing lock pin before operating backhoe.

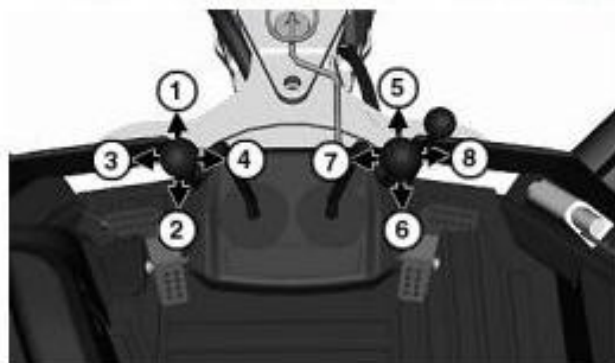
Disengaging the Swing Lock

Remove swing lock pin (1) from swing lock mounting hole (2) and install pin in storage position in operator's station.

Engaging the Swing Lock

Remove swing lock pin from storage position in operator's station and install pin in swing lock mounting hole.

Backhoe Operation—Two-Lever Controls—Backhoe Pattern



LEGEND:

- 1 Boom Lower
- 2 Boom Raise
- 3 Boom Swing Left
- 4 Boom Swing Right
- 5 Dipperstick Raise
- 6 Dipperstick Lower
- 7 Bucket Load
- 8 Bucket Dump

Two-Lever Controls—Backhoe Pattern



Thank you very much
for your reading.
Please click here
to get more information.