

# John Deere 310SL Backhoe Loader (PIN: 1T0310SL\_F273920-) Operators Manual (OMT357555X19)

310SL Backhoe Loader  
Operator's Manual



## OPERATOR'S MANUAL

Backhoe Loaders models 310SL (PIN:1T0310SL\*\*F273920-)

OMT357555X19 21 APR 15 (ENGLISH)



John Deere Construction and Forestry  
Printed by Belgreen



**Covers:** 310SL,1T0310SL\_F273920)

**Type:** Service Manual

**Language:** English

**Pages:** 340

**Format:** PDF

**Features:** Bookmarked, searchable, printable

**Compatibility:** Windows/Mac/Tablet/Mobile

This service manual contains important information for the maintenance, troubleshooting and servicing of the **John Deere 310SL Backhoe Loader (PIN: 1T0310SL\_F273920-) Operators Manual (OMT357555X19)**

In this manual you will find detailed specifications, illustrations, schematics, diagrams and step-by-step procedures to properly service and diagnose the machine to the manufacturer's standards.

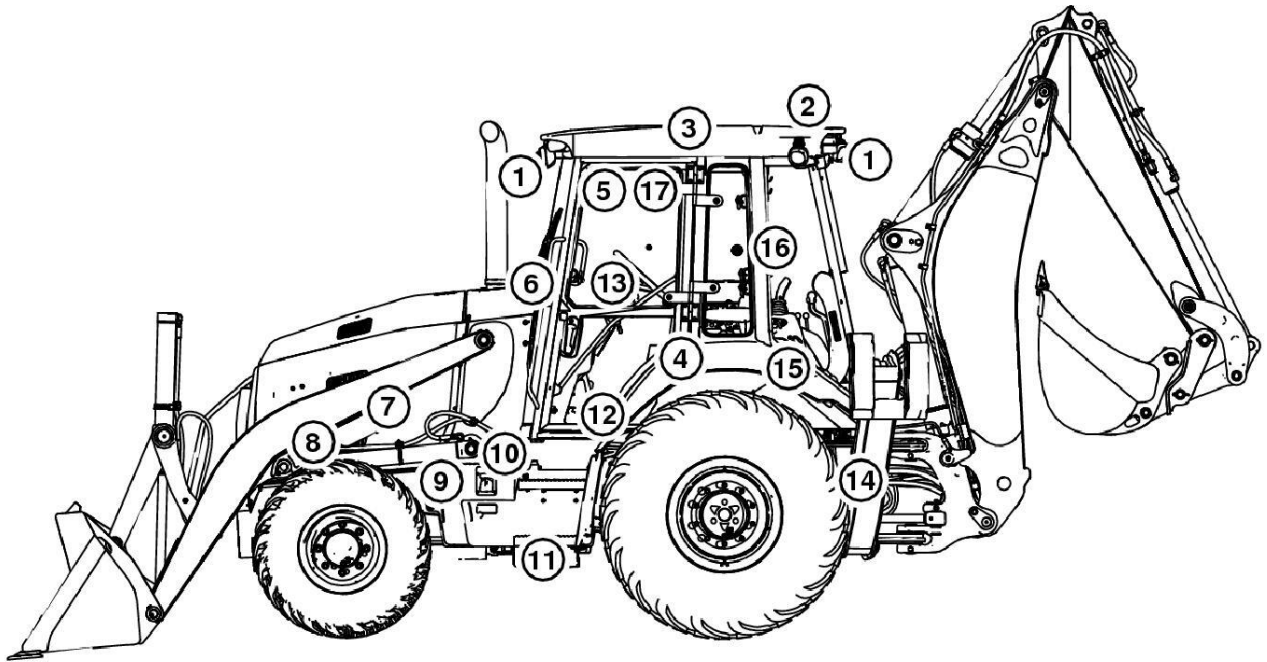
**Contents:**

- General Information
- Specifications
- Serial Number Location
- Engine Specifications
- Engine Diagnostics
- Engine Tests and Adjustments
- Engine Repair
- Power Train
- Transmission
- Axles
- Differential
- PTO
- Hydraulic System
- Electrical System
- Electrical Tests and Diagnostics
- Wiring Diagram / Schematic
- Ignition and Charging
- Steering
- Brakes
- Wheels
- Operator's Platform
- Body Panels
- Disassembly and Assembly
- Diagnostics, Tests and Adjustments
- Troubleshooting
- and much more...

Please note this manual is in **downloadable PDF format only**. If you have any questions about this product or would like to request sample pages, please contact us and reference the product name or SKU.

## Group 1.1 - Safety and Operator Conveniences

### Safety and Operator Convenience Features



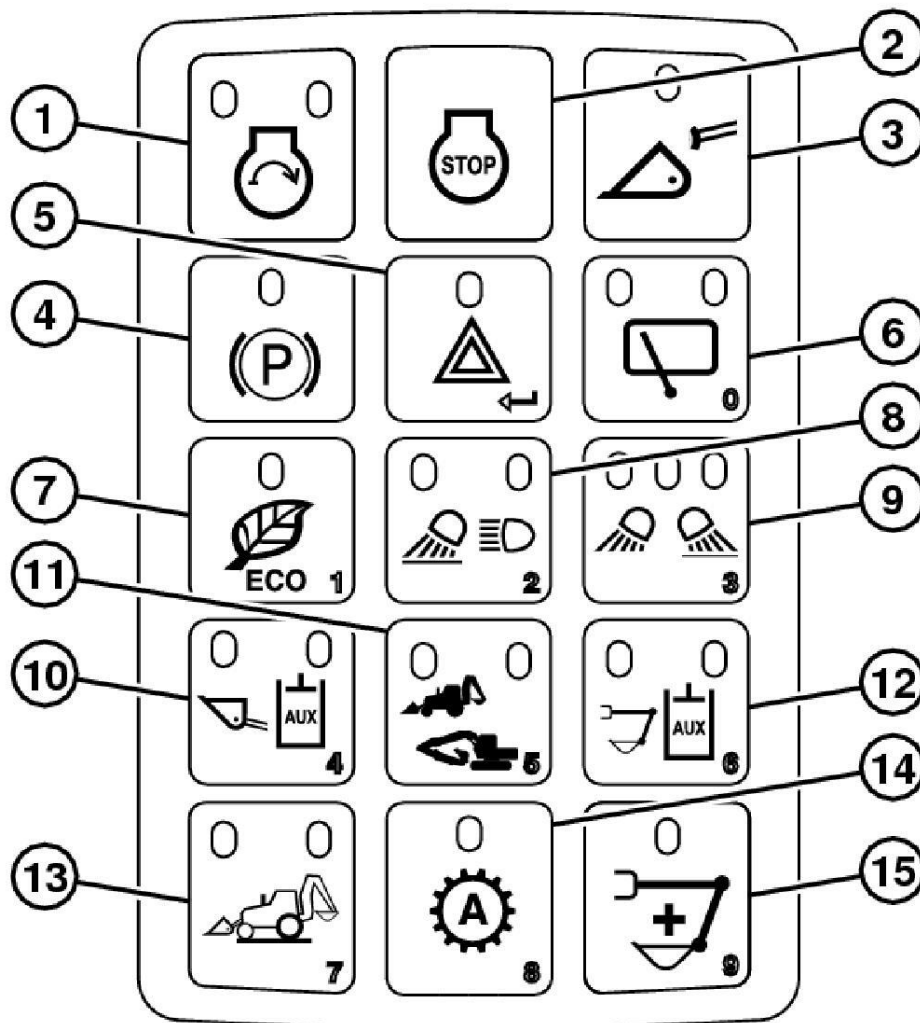
TX1171172

#### Safety and Operator Conveniences

Please remember, the **operator** is the key to preventing accidents.

1. **Headlights/Taillights**— Two front drive/work lights and two rear work lights.
2. **Signal/Warning Lights**— Roof-mounted turning signal lights and warning lights for on-road use.
3. **Roll-Over Protection Structure (ROPS)**— Certified ROPS surrounds the operator. Integral roof provides overhead protection.
4. **Seat Position Sensor**— An audio/visual warning alerts operator when transmission control lever (TCL) is in forward/reverse and seat is turned toward backhoe position.
5. **Interior Rearview Mirror**— Mirror offers the operator a view of activity behind them.
6. **Handholds**— Large, conveniently placed handholds help operator to enter or exit the operator's station.
7. **Loader Boom Service Lock**— Loader boom service lock is provided for working on or around this machine with the boom raised.
8. **Engine Fan Guard**— A secondary engine fan guard inside engine compartment encloses rotating fan blades.
9. **Bypass Start Protection**— Shielding over the starter solenoid helps prevent dangerous bypass starting.
10. **Ground-Level Fueling**— Ground-level fueling feature eliminates the need to climb on the machine when fueling.
11. **Steps**— Wide, skid-resistant steps provide excellent footing for getting in/out of operator's station.
12. **Independent Parking/Secondary Brake**— Independent, electrically controlled parking brake electrically engages when the engine is stopped.
13. **Neutral Start**— The machine will not move until the transmission control lever (TCL) is cycled back to neutral and the park brake is released, regardless of TCL position at start-up.
14. **Backup Alarm**— Alarm alerts bystanders when the machine is shifted into reverse.
15. **Seat Belt Retractors**— Seat belt retractors help keep belts clean and convenient to use.
16. **Exceptional Visibility**— Views to either side, front, and rear working tools are unrestricted.
17. **Operator's Manual Holder**— A sealed manual holder keeps manual clean and dry.

## Sealed Switch Module (SSM) Functions



### Sealed Switch Module (SSM)

#### LEGEND:

- |    |   |
|----|---|
| 1  | Engine Start Switch                         |
| 2  | Engine Stop Switch                          |
| 3  | Loader Coupler Switch (if equipped)         |
| 4  | Park Brake Switch                           |
| 5  | Hazard Warning Signal Switch                |
| 6  | Rear Wiper Switch                           |
| 7  | ECO Mode Switch                             |
| 8  | Front Work Lights Switch                    |
| 9  | Rear Work Lights Switch                     |
| 10 | Loader Auxiliary Switch (if equipped)       |
| 11 | Control Pattern Select Switch (if equipped) |
| 12 | Selective Auxiliary Flow Switch             |
| 13 | Ride Control Switch (if equipped)           |
| 14 | Automatic Transmission Switch               |
| 15 | Lift Mode Switch                            |

Most switches on the sealed switch module (SSM) are equipped with light emitting diodes (LEDs) to indicate current switch setting. Press switch momentarily to advance to next setting. For switches with more than one LED, press and hold switch for 2–3 seconds to return to OFF from any setting.

**1—Engine Start Switch:** This switch has three settings:

- Press and release switch (left LED illuminated) to energize ignition and apply power to control units and display unit.

**→NOTE: If kept in this state for more than 10 minutes, machine will shutdown automatically.**

- After display unit has initialized, press and hold switch to start engine. Both LEDs are illuminated when engine is cranking. Only left LED is illuminated when engine is running.



Thank you very much  
for your reading.  
Please click here  
to get more information.