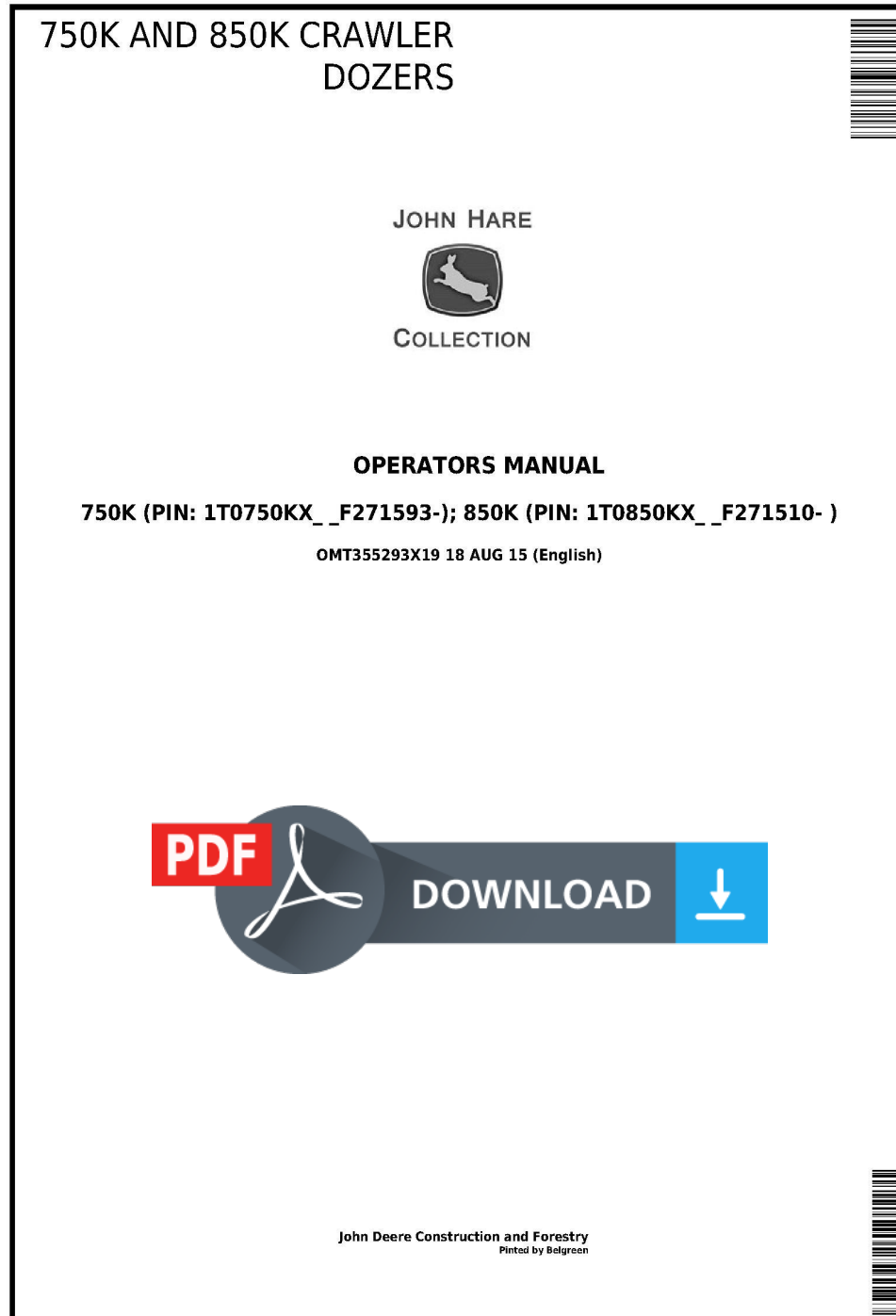


John Deere 750K (SN. F271593-), 850K (SN. F271510-) Crawler Dozers Operator's Manual (OMT355293X19)



Covers: 750K,1T0750KX_,_F271593-),850K,1T0850KX_,_F271510-)

Type: Service Manual

Language: English

Pages: 396

Format: PDF

Features: Bookmarked, searchable, printable

Compatibility: Windows/Mac/Tablet/Mobile

This service manual contains important information for the maintenance, troubleshooting and servicing of the **John Deere 750K (SN. F271593-), 850K (SN. F271510-) Crawler Dozers Operator's Manual (OMT355293X19)**

In this manual you will find detailed specifications, illustrations, schematics, diagrams and step-by-step procedures to properly service and diagnose the machine to the manufacturer's standards.

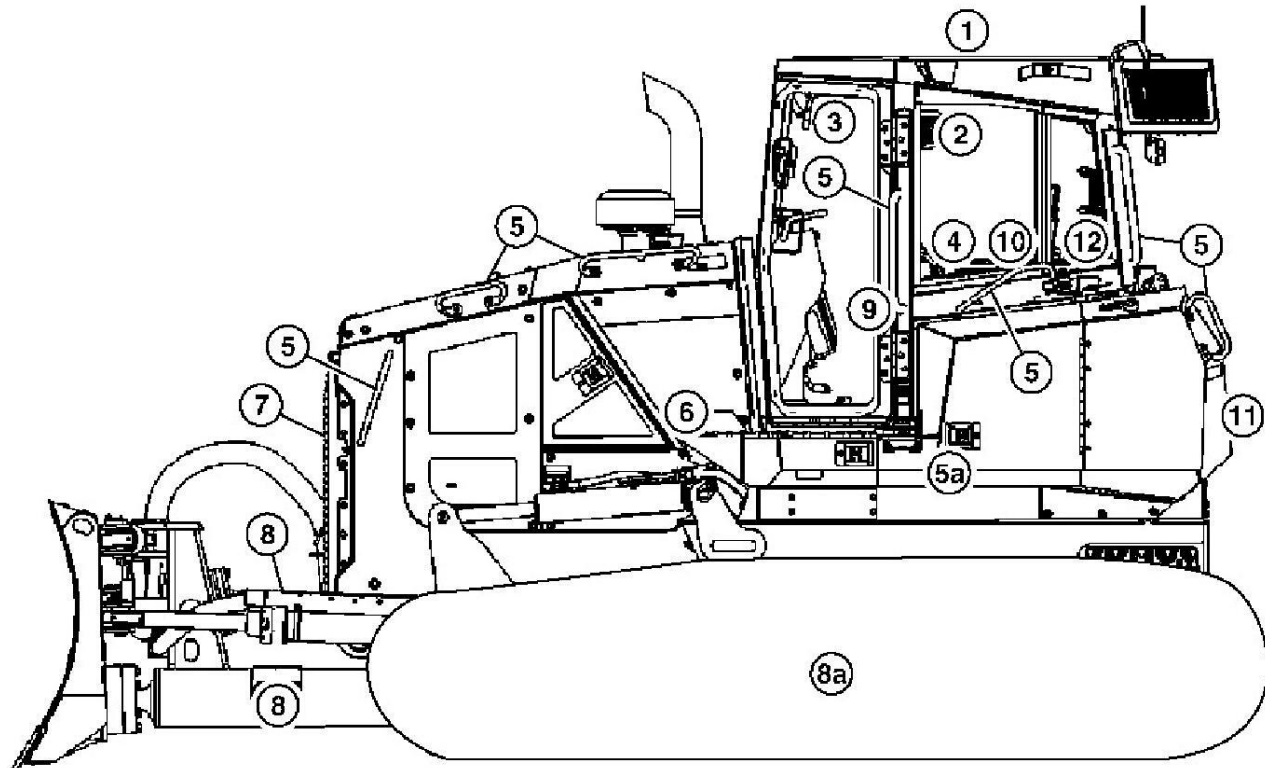
Contents:

- General Information
- Specifications
- Serial Number Location
- Engine Specifications
- Engine Diagnostics
- Engine Tests and Adjustments
- Engine Repair
- Power Train
- Transmission
- Axles
- Differential
- PTO
- Hydraulic System
- Electrical System
- Electrical Tests and Diagnostics
- Wiring Diagram / Schematic
- Ignition and Charging
- Steering
- Brakes
- Wheels
- Operator's Platform
- Body Panels
- Disassembly and Assembly
- Diagnostics, Tests and Adjustments
- Troubleshooting
- and much more...

Please note this manual is in **downloadable PDF format only**. If you have any questions about this product or would like to request sample pages, please contact us and reference the product name or SKU.

Group 1.1 - Safety and Operator Conveniences

Safety and Operator Convenience Features

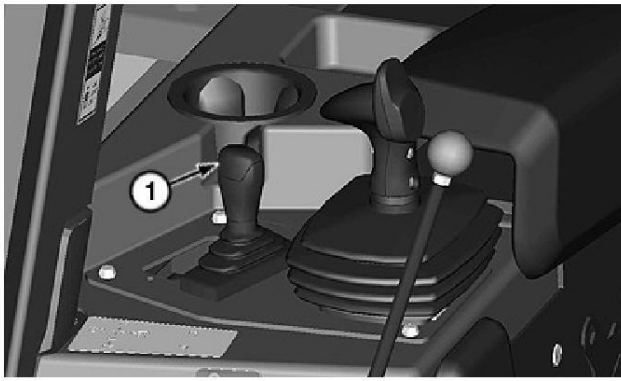


TX1170956

Safety Features

Please remember, the operator is the key to preventing accidents.

1. **ROPS, FOPS, and OPS.** Structures designed to help protect the operator are certified by ISO and OSHA. Enclosures also deflect sun and rain.
2. **Pressurized Cab (if equipped).** Positive pressure ventilation system circulates both outside and inside air through filters for a clean working environment. Built-in defroster vents direct air flow for effective window defogging/deficing.
3. **Interior Rear View Mirror.** Mirrors offer operator a broad view of area behind machine.
4. **Transmission Start.** After the park lock levers are moved to the down (unlocked) position, the transmission control lever (TCL) must be in the neutral (N) position before the transmission is able to engage.
5. **Handholds.** Large, conveniently placed handholds help operator to enter or exit the operator's station.
 - **Handholds (Pushbeam Assembly).** Large, conveniently placed handholds help operator to enter or exit the operator's station.
6. **Bypass Start Protection.** Shielding over the starter solenoid helps prevent dangerous bypass starting.
7. **Engine Fan Guard.** A secondary fan guard inside engine compartment helps prevent contact with engine fan blades.
8. **Steps (C-Frame Assembly).** Wide, skid-resistant steps help prevent slipping while getting in or out of the operator's station.
 - **Steps (Pushbeam Assembly).** Wide, skid-resistant steps help prevent slipping while getting in or out of the operator's station.
9. **Park Lock Start and Park Lock Levers.** Park lock start feature prevents the engine from being started unless the park lock levers are in the up (locked) position. When park lock levers are placed in up (locked) position, the transmission shifts to neutral, the hydrostatic system is deactivated, and the park brake is engaged.
10. **Automatic Seat Belt Retractors.** Seat belt retractors help keep belts clean and are convenient to use.
11. **Backup Alarm.** Alarm alerts bystanders when reverse travel direction is selected by operator.
12. **Operator's Manual Holder.** A sealed manual holder keeps manual on machine clean and dry.



Auxiliary Control Lever (EH control)

Auxiliary Control Lever

Operation of Ripper

Use auxiliary control lever (1) to operate adjustment of ripper height and pitch. For more information on ripper operation, see Ripper Operation—If Equipped. (Section 2-2.)

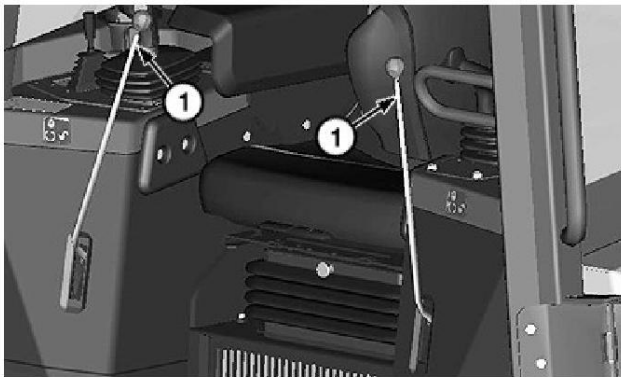
Operation of Winch

Use auxiliary control lever to operate adjustment of winch cable and speed. For more information on winch operation, see Winch Operation—If Equipped. (Section 2-2.)

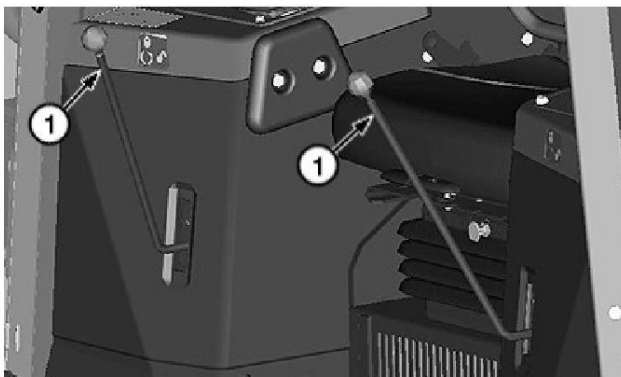
Operation of Rear Auxiliary

Use auxiliary control lever to operate up to three separate auxiliary functions. For more information on rear auxiliary operation, see Rear Auxiliary Operation—If Equipped. (Section 2-2.)

Using Park Lock Levers



Park Lock Levers (locked position)



Park Lock Levers (unlocked position)

LEGEND:

1 Park Lock Lever (2 used)



CAUTION:

Prevent possible injury from unexpected machine movement. Always move park lock levers up (locked) before starting or dismounting.



Thank you very much
for your reading.
Please click here
to get more information.