

John Deere 344L Compact 4WD Loader Repair Technical Manual - TM14280X19

344L Compact 4WD Loader Repair

PIN: 1LU344LX__B043142—

PIN: 1LU344LH__B043142—



JOHN HARE



COLLECTION

REPAIR TECHNICAL MANUAL 344L Compact 4WD Loader

(PIN: 1LU344LX__B043142—; PIN: 1LU344LH__B043142—)

TM14280X19 01DEC19 (ENGLISH)



Worldwide Construction and
Forestry Division

Covers: 344L,1LU344LX__,B043142;1LU344LH__,B043142

Type: Service Manual

Language: English

Pages: 256

Format: PDF

Features: Bookmarked, searchable, printable

Compatibility: Windows/Mac/Tablet/Mobile

This service manual contains important information for the maintenance, troubleshooting and servicing of the **John Deere 344L Compact 4WD Loader Repair Technical Manual - TM14280X19**

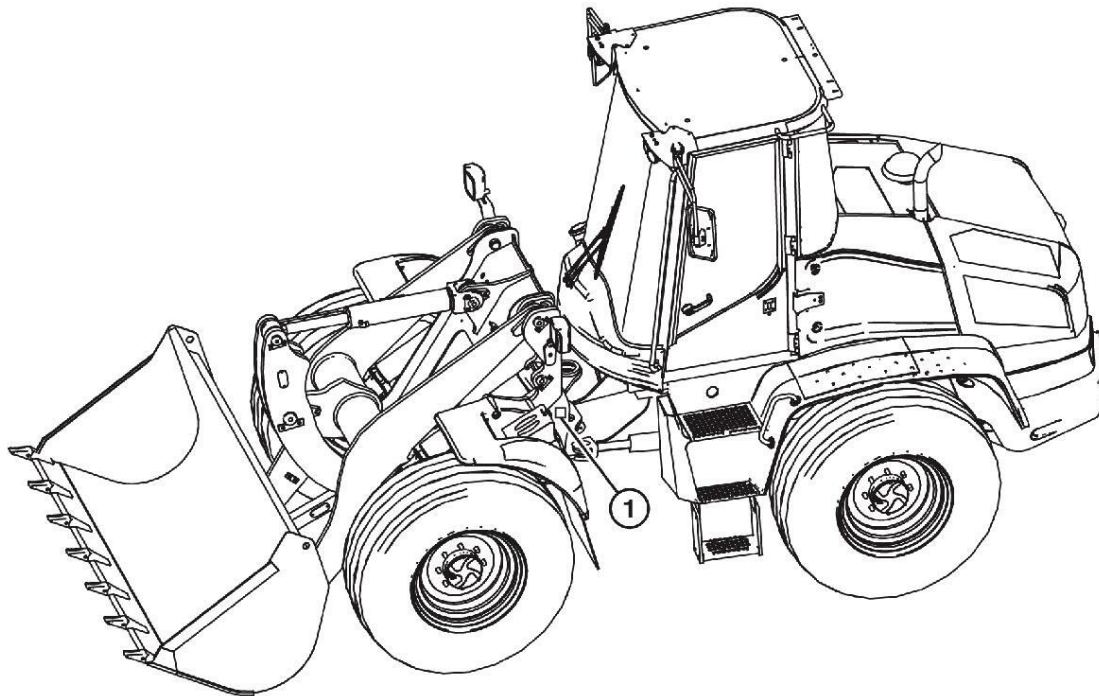
In this manual you will find detailed specifications, illustrations, schematics, diagrams and step-by-step procedures to properly service and diagnose the machine to the manufacturer's standards.

Contents:

- General Information
- Specifications
- Serial Number Location
- Engine Specifications
- Engine Diagnostics
- Engine Tests and Adjustments
- Engine Repair
- Power Train
- Transmission
- Axles
- Differential
- PTO
- Hydraulic System
- Electrical System
- Electrical Tests and Diagnostics
- Wiring Diagram / Schematic
- Ignition and Charging
- Steering
- Brakes
- Wheels
- Operator's Platform
- Body Panels
- Disassembly and Assembly
- Diagnostics, Tests and Adjustments
- Troubleshooting
- and much more...

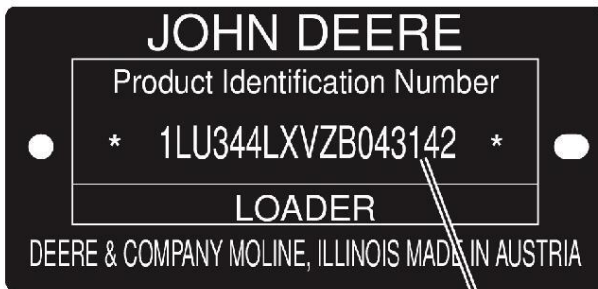
Please note this manual is in **downloadable PDF format only**. If you have any questions about this product or would like to request sample pages, please contact us and reference the product name or SKU.

Manual Identification—READ THIS FIRST!



TX1246303

TX1246303-UN: PIN Plate Location



TX1247602-UN: Example of PIN Plate

LEGEND:

1-PIN Plate

2-17-Character PIN

IMPORTANT:

Use only supporting manuals designated for each specific machine. If incorrect manual is chosen, improper service may occur. Verify product identification number (PIN) when choosing the correct manual.

Choosing the Correct Supporting Manuals

John Deere machines are available in different machine configurations based on the various markets into which they are sold. Different supporting manuals exist for different machine configurations.

When necessary, product identification numbers are listed on the front covers of the manuals. These numbers are used to identify the correct supporting manual for the machine.

Product Serial Number Identification

The product identification number (PIN) plate (1) is located on the left side of the machine frame. Each machine has a 17-character PIN (2) shown on PIN plate.

The PIN identifies the producing factory, machine model number, machine option, year of manufacture, and machine serial number. The following is an example for a machine that meets Final Tier 4 and Stage IV emission levels:

17-Character PIN Example																
1	2	3	4	5	6	7	8	9	10	11	12	13	14	15	16	17
1	L	U	3	4	4	L	X	-	-	B	0	4	3	1	4	2

Power-Takeoff (PTO) Gear Case Remove and Install

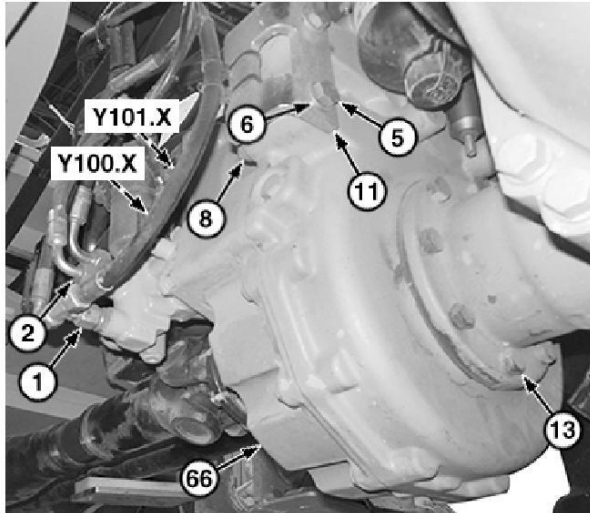
SPECIFICATIONS	
Gear Case Weight (approximate)	76 kg 168 lb
Gear Case Mounting Cap Screw Torque	51 N·m 38 lb·ft

OTHER MATERIAL	
Loctite®515™ Gasket Eliminator®Flange Sealant	
Loctite®242®Threadlocker (medium strength)	

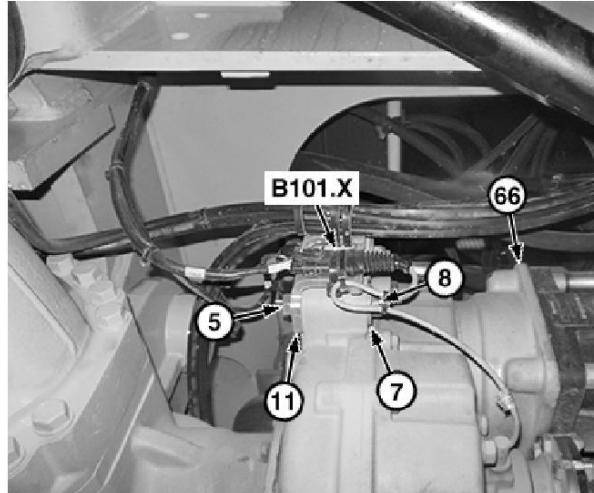
MACHINE PREPARATION

1. Park and prepare machine for service. See Park and Prepare for Service Safely. (Group 0001.)
2. Turn battery disconnect switch to the OFF position. See Battery Disconnect Switch - document OMT404539X19 - (Operator's Manual.)
3. Remove drive shaft. See Drive Shaft Remove and Install. (Group 0225.)
4. Remove hydrostatic motor. See Hydrostatic Motor Remove and Install. (Group 0300.)

REMOVAL



TX1256304A-UN: Gear Case



TX1256307A-UN: Gear Case

LEGEND:

- 1-Charge Pressure Fitting
- 2-Charge Pressure Line
- 5-Cap Screw (4 used)
- 6-Washer (4 used)
- 7-Washer (4 used)
- 8-Nut (4 used)
- 13-Cap Screw (8 used)
- 11-Bracket
- 66-Gear Case
- B101.X-Output Speed Sensor 4-Pin Connector
- Y100.X-First Gear Solenoid 2-Pin Connector
- Y101.X-Second Gear Solenoid 2-Pin Connector

1. Install identification tags and disconnect charge pressure fitting (1) and charge pressure line (2). Close all openings using caps and plugs.
2. Install identification tags and disconnect electrical connectors (B101.X, Y100.X, and Y101.X).

IMPORTANT:

3. **Avoid damage to hydraulic lines and electrical harnesses. Use appropriate supporting device on bracket (11).**

Attach appropriate device to support bracket (11). Remove cap screws (5), washers (6 and 7), and nuts (8).

4. **CAUTION:**
Prevent possible crushing injury from heavy component. Use appropriate lifting device.

Attach appropriate lifting device to support gear case (66). Remove cap screws (13) and gear case.

Item	Measurement	Specification
Gear Case	Weight (approximate)	76 kg 168 lb

5. Repair or replace parts as necessary. See Dana Gear Box Service Manual. (367.)

INSTALLATION

Installation is reverse of removal procedure.

Apply Loctite®515™ Gasket Eliminator®Flange Sealant to rear axle flange and install gear case to rear axle.



Thank you very much
for your reading.
Please click here
to get more information.