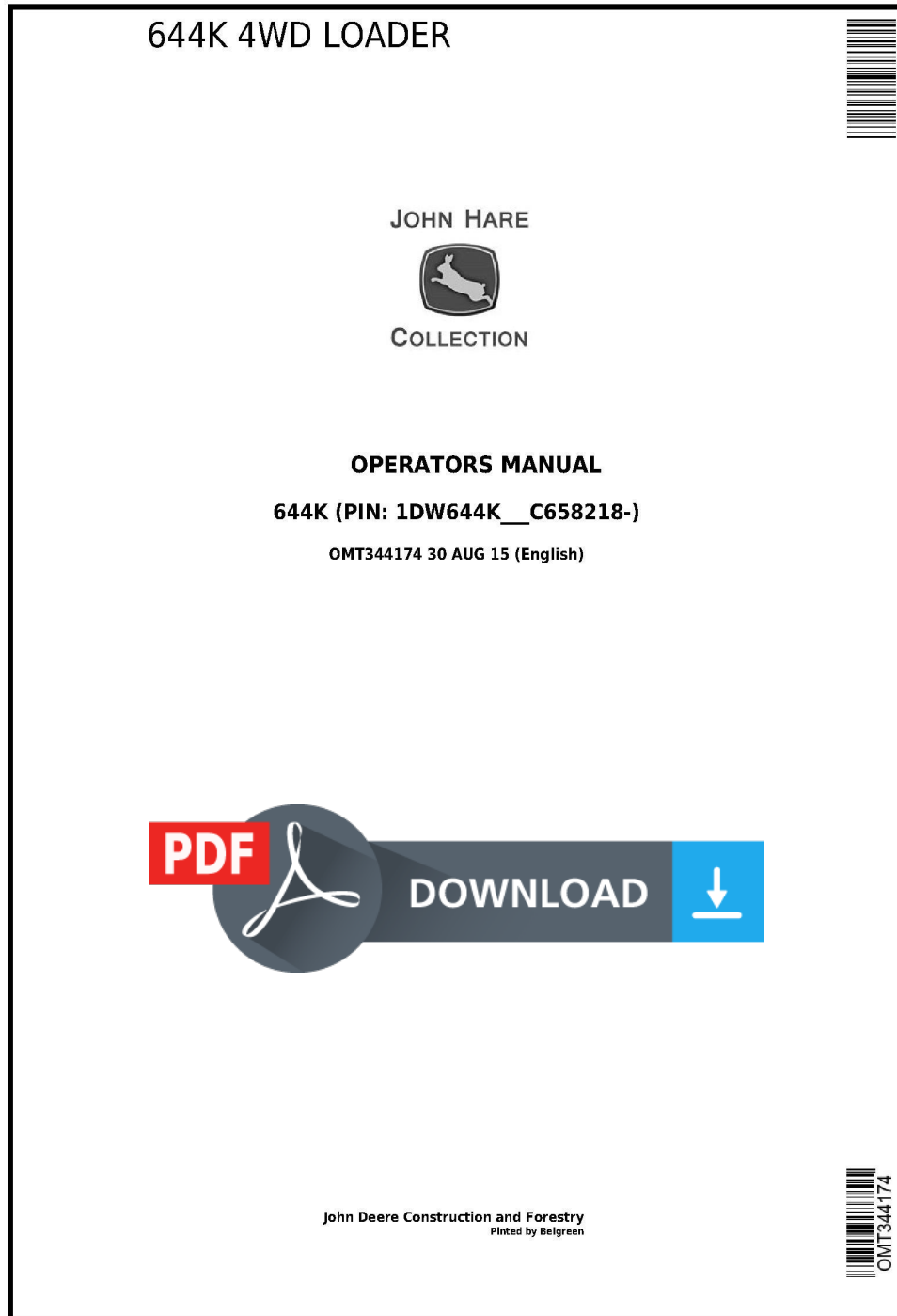


# John Deere 644K 4WD Loader (SN: from C658218) Operators Manual (OMT344174)



**Covers:** 644K,1DW644K\_\_,\_C658218-)

**Type:** Service Manual

**Language:** English

**Pages:** 405

**Format:** PDF

**Features:** Bookmarked, searchable, printable

**Compatibility:** Windows/Mac/Tablet/Mobile

This service manual contains important information for the maintenance, troubleshooting and servicing of the **John Deere 644K 4WD Loader (SN: from C658218) Operators Manual (OMT344174)**

In this manual you will find detailed specifications, illustrations, schematics, diagrams and step-by-step procedures to properly service and diagnose the machine to the manufacturer's standards.

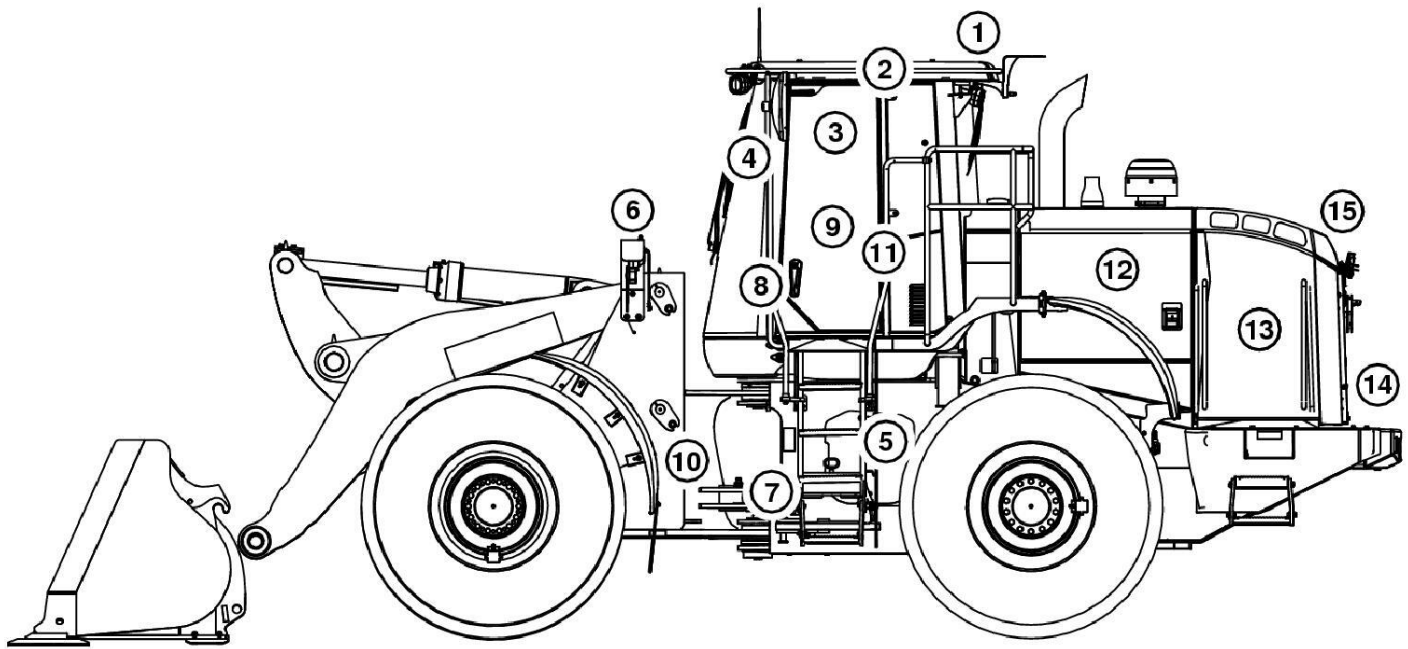
**Contents:**

- General Information
- Specifications
- Serial Number Location
- Engine Specifications
- Engine Diagnostics
- Engine Tests and Adjustments
- Engine Repair
- Power Train
- Transmission
- Axles
- Differential
- PTO
- Hydraulic System
- Electrical System
- Electrical Tests and Diagnostics
- Wiring Diagram / Schematic
- Ignition and Charging
- Steering
- Brakes
- Wheels
- Operator's Platform
- Body Panels
- Disassembly and Assembly
- Diagnostics, Tests and Adjustments
- Troubleshooting
- and much more...

Please note this manual is in **downloadable PDF format only**. If you have any questions about this product or would like to request sample pages, please contact us and reference the product name or SKU.

## Group 1.1 - Safety and Operator Conveniences

### Safety and Operator Convenience Features



TX1098182

#### Safety Features

Please remember, the operator is the key to preventing accidents.

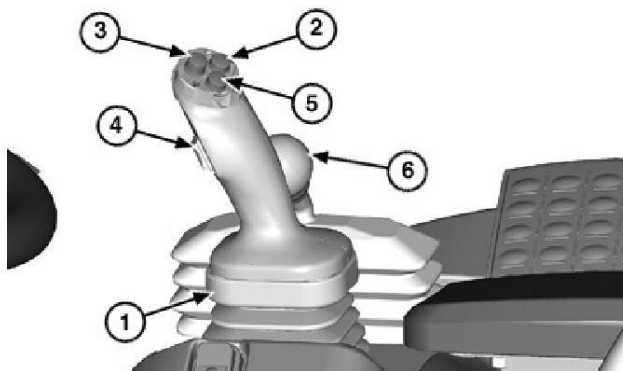
1. **ROPS, FOPS, and OPS.** Structures designed to help protect the operator are certified to ISO and OSHA. Enclosures also deflect sun and rain.
2. **Pressurized Cab with Heater and Defroster.** Positive pressure ventilation system circulates both outside and inside air through filters for a clean working environment. Built in defroster vents direct air flow for effective window defogging/deicing.
3. **Mirrors.** Large exterior mirrors on both sides and an inside mirror offers operator a broad view of area behind machine.
4. **Large Windshield Wiper with Washer.** Extra long wiper cleans large windshield area.
5. **Loader Boom Service Lock.** Loader includes a mechanical lock for securing boom in the raised position before work is started on or around the machine.
6. **Halogen Lights and Turn Signals.** High intensity halogen drive/work lights and high-visibility turn signals are standard equipment.
7. **Articulation Locking Bar.** A self-storing mechanical lock is provided for transport or service.
8. **Handholds.** Large, conveniently placed handholds make it easy to enter or exit the operator's station or service area.
9. **Horn.** Standard horn is useful when driving or signaling coworkers.
10. **Independent Parking Brake.** Electronically controlled and engages whenever the engine is stopped.
11. **Seat Belt Retractors.** Seat belt retractors help keep belts clean and convenient to use.
12. **Bypass Start Protection.** Shielding over the starter terminals helps prevent dangerous bypass starting.
13. **Engine Fan Guard.** A secondary fan guard inside the cooling compartment helps prevent contact with the rotating fan blades.
14. **Backup Alarm.** Alerts bystanders when reverse travel direction is selected by operator.
15. **Stop and Signal Lights.** Highly visible stop lights and turn signal lights are standard equipment.

## Levers—Three Function Hydraulic Control

### →NOTE:

There are several control lever configurations available on John Deere four wheel drive loaders. Please verify the configuration of your machine before reviewing operating instructions.

### Joystick Bucket and Boom Control with Gearshift, Quick Shift Switch, FNR Switch, and Third Function Auxiliary Control Lever

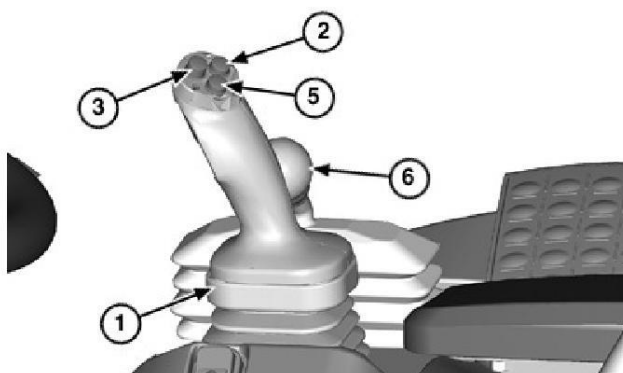


#### LEGEND:

- 1 Joystick Bucket and Boom Control
- 2 Increase Gear Button
- 3 Quick Shift Switch
- 4 Forward, Neutral, or Reverse (FNR) Switch
- 5 Decrease Gear Button
- 6 Third Function Auxiliary Control Lever

### Joystick Bucket and Boom Control with Gearshift, Quick Shift Switch, FNR Switch, and Third Function Auxiliary Control Lever

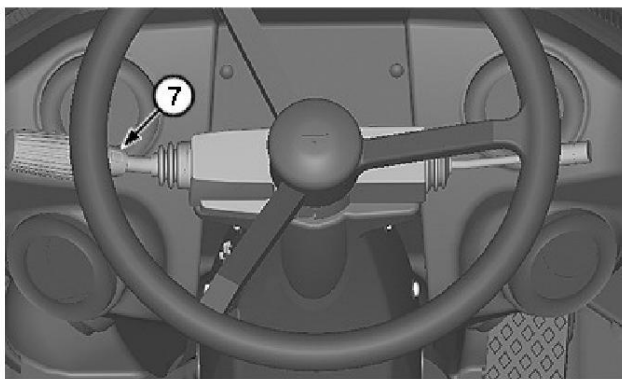
### Joystick Bucket and Boom Control with Gearshift and Quick Shift Switch, Steering Column FNR Lever, and Third Function Auxiliary Control Lever



#### LEGEND:

- 1 Joystick Bucket and Boom Control
- 2 Increase Gear Button
- 3 Quick Shift Switch
- 5 Decrease Gear Button
- 6 Third Function Auxiliary Control Lever
- 7 Steering Column Forward, Neutral, or Reverse (FNR) Lever

### Joystick Bucket and Boom Control with Gearshift, Quick Shift Switch, and Third Function Auxiliary Control Lever



### Steering Column FNR Lever



Thank you very much  
for your reading.  
Please click here  
to get more information.