

909MH Tracked Harvester (SN. from 271505) Diagnostic



OPERATION AND TEST MANUAL

Tracked models 909MH (PIN: 1T0909MHC271505—; 1T0909MH**DC271505—)**

TM13235X19 16 FEB 16 (ENGLISH)

For complete service information also see:

903MH and 909MH Tracked Harvester (SN. from 271505) Repair TM13377X19

JDLINK (MTG) Technical Manual TM114519

Alternators and Starting Motors CTM77

PowerTech 9.0L OEM Diesel Engines 6090 Tier 3 / Stage IIIA Emissions
Certified Base Engine Repair CTM400

PowerTech 6090 Diesel Engine Level 1 and 2 Repair with the Denso
High Pressure Common Rail (HPCR) L

120 Series Hydraulic Cylinders

COOLANT HEATER SERVICE MANUAL

CTM10090X19



Table of contents

FOREWORD

MANUAL IDENTIFICATION—READ THIS FIRST!

Section 9000 - GENERAL INFORMATION

Group 01 - Safety

Section 9001 - DIAGNOSTICS

Group 10 - Engine Control Unit (ECU) Diagnostic Trouble Codes

Group 50 - Left Armrest Controller (ACL) Diagnostic Trouble Codes

Group 60 - Right Armrest Controller (ACR) Diagnostic Trouble Codes

Group 70 - Sealed Switch Module (SSM) Diagnostic Trouble Codes

Group 80 - Vehicle Control Unit (VCU) Diagnostic Trouble Codes

Group 90 - Primary Display Unit (PDU) Diagnostic Trouble Codes

Section 9005 - OPERATIONAL CHECKOUT PROCEDURE

Group 10 - Operational Checkout Procedure

Section 9010 - ENGINE

Group 05 - Theory of Operation

Group 10 - System Diagrams

Group 15 - Diagnostic Information

Group 25 - Tests

Section 9015 - ELECTRICAL SYSTEM

Group 05 - System Information

Group 10 - System Diagrams

Group 15 - Sub-System Diagnostics

Group 16 - Monitor Operation

Group 17 - Diagnostic Test Box

Group 20 - References

Group 25 - Tests

Section 9020 - POWER TRAIN

Group 05 - Theory of Operation

Group 15 - Diagnostic Information

Section 9025 - HYDRAULIC SYSTEM

Group 05 - Theory of Operation

Group 10 - System Diagrams

Group 15 - Diagnostic Information

Group 25 - Tests

Section 9030 - MISCELLANEOUS

Group 05 - Theory of Operation

Group 10 - System Diagrams

Section 9031 - HEATING AND AIR CONDITIONING

Group 05 - Theory of Operation

Group 10 - System Diagrams

Group 15 - Diagnostic Information

Group 25 - Tests

Foreword

This manual is written for an experienced technician. Essential tools required in performing certain service work are identified in this manual and are recommended for use.

Live with safety: Read the safety messages in the introduction of this manual and the cautions presented throughout the text of the manual.



CAUTION:

This is the safety-alert symbol. When this symbol is seen on the machine or in this manual, be alert for the potential of personal injury.

Technical manuals are divided in two parts: repair and operation and tests. Repair sections tell how to repair the components. Operation and test sections help to quickly identify the majority of routine failures quickly.

Information is organized in groups for the various components requiring service instruction. At the beginning of each group are summary listings of all applicable essential tools, service equipment and tools, other materials needed to do the job, service parts kits, specifications, wear tolerances, and torque values.

Technical manuals are concise guides for specific machines. They are on-the-job guides containing only the vital information needed for diagnosis, analysis, testing, and repair.

Fundamental service information is available from other sources covering basic theory of operation, fundamentals of troubleshooting, general maintenance, and basic type of failures and their causes.

Manual Identification—READ THIS FIRST!

IMPORTANT:

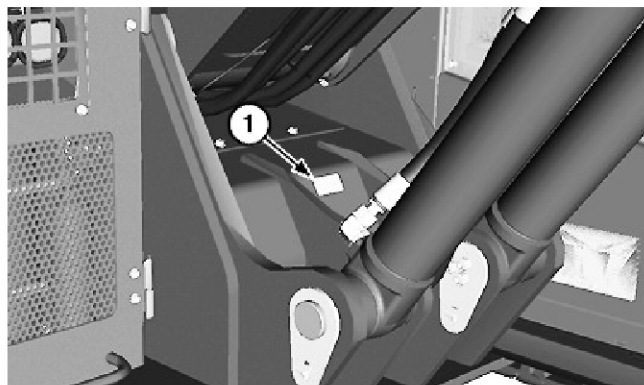
Use only supporting manuals designated for your specific machine. If incorrect manual is chosen, improper service may occur. Verify product identification number (PIN) when choosing the correct manual.

Choosing the Correct Supporting Manuals

John Deere feller bunchers are available in different machine configurations based on the various markets into which they are sold. Different supporting manuals exist for different machine configurations.

When necessary, product identification numbers (PINs) are listed on the front covers of feller buncher manuals. These numbers are used to identify the correct supporting manual for your machine.

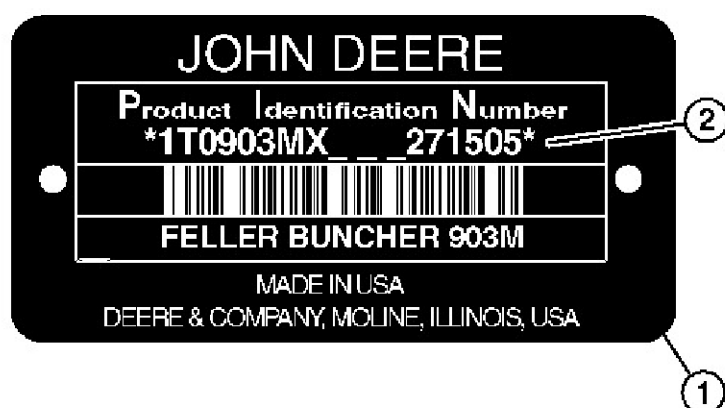
Product Identification Number



LEGEND:

- | | |
|---|------------------|
| 1 | PIN Plate |
| 2 | 17-Character PIN |

Product Identification Number(PIN) Plate



Example of 17-Character PIN Plate

The product identification number (PIN) plate (1) is located inside the battery compartment. Each machine has a 17-character PIN (2) shown on PIN plate.



Thank you very much
for your reading.
Please click here
to get more information.