

John Deere 200G Excavator Repair Technical Manual (TM14376X19)

200G Excavator Repair

PIN: 1F9200GX__D020101—



JOHN HARE



COLLECTION

REPAIR TECHNICAL MANUAL

200G Excavator (PIN: 1F9200GX__D020101—)

TM14376X19 30NOV19 (ENGLISH)

For complete service information also see:

200G Excavator Diagnosis..... TM14376X19
PowerTech 4.5L & 5.5L Diesel Engines Tier 1/Stage I, Tier 2/Stage II, Tier 3/Stage IIA, Tier 3/Stage II, (Base Engine)..... cm104



Worldwide Construction and Forestry Division

Covers: 200G,1F9200GX__,_D020101 ()

Type: Service Manual

Language: English

Pages: 375

Format: PDF

Features: Bookmarked, searchable, printable

Compatibility: Windows/Mac/Tablet/Mobile

This service manual contains important information for the maintenance, troubleshooting and servicing of the **John Deere 200G Excavator Repair Technical Manual (TM14376X19)**

In this manual you will find detailed specifications, illustrations, schematics, diagrams and step-by-step procedures to properly service and diagnose the machine to the manufacturer's standards.

Contents:

- General Information
- Specifications
- Serial Number Location
- Engine Specifications
- Engine Diagnostics
- Engine Tests and Adjustments
- Engine Repair
- Power Train
- Transmission
- Axles
- Differential
- PTO
- Hydraulic System
- Electrical System
- Electrical Tests and Diagnostics
- Wiring Diagram / Schematic
- Ignition and Charging
- Steering
- Brakes
- Wheels
- Operator's Platform
- Body Panels
- Disassembly and Assembly
- Diagnostics, Tests and Adjustments
- Troubleshooting
- and much more...


Please note this manual is in **downloadable PDF format only**. If you have any questions about this product or would like to request sample pages, please contact us and reference the product name or SKU.

Pump 1 and 2 Remove and Install

SPECIFICATIONS	
Hydraulic Oil Tank Capacity	125 L 33 gal
Pump Drive Gear Case and Pump 1 and 2 Weight (approximate)	196 kg 432 lb
Pump Drive Gear Case-to-Flywheel Housing Cap Screw Torque	65 N·m 48 lb·ft
Split Flange 8 mm Cap Screw Torque	50 N·m 37 lb·ft
Split Flange 10 mm Cap Screw Torque	90 N·m 66 lb·ft

SERVICE EQUIPMENT AND TOOLS	
JT01748 Lifting Bracket	

1. Park and prepare machine for service safely. [See Park and Prepare for Service Safely.](#) (Group 0001.)
2. Disconnect the battery negative (-) cable.

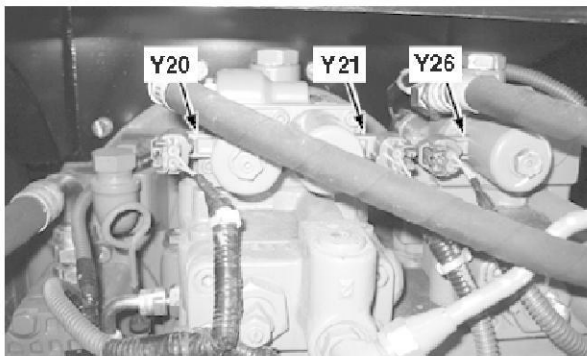
3.  **CAUTION:**
Avoid personal injury from high-pressure fluid. High-pressure release of oil from pressurized system can cause serious burns or penetrating injury. Relieve pressure from hydraulic system before servicing.

Release hydraulic oil tank pressure. See Hydraulic Oil Tank Pressure Release Procedure - document TM14375X19 - (Group 9025-25.)

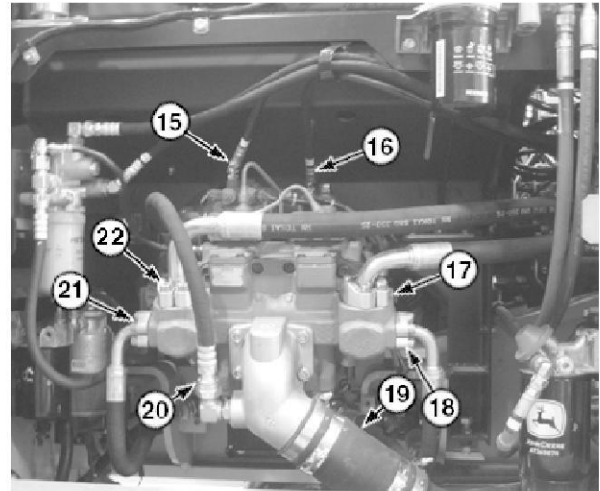
4. Remove hood. [See Hood Remove and Install.](#) (Group 1910.)
5. Drain hydraulic oil tank. See Drain and Refill Hydraulic Tank Oil - document OMT429492X19 - (Operator's Manual.)

Item	Measurement	Specification
Hydraulic Oil Tank	Capacity	125 L 33 gal

6. Drain pump drive gear case. See Drain and Refill Pump Drive Gear Case Oil - document OMT429492X19 - (Operator's Manual.)



7. TX1113299A-UN: Solenoids
LEGEND:
Y20-Pump 2 Flow Rate Limit Solenoid (marked SB)
Y21-Torque Control Solenoid (marked ST)
Y26-Pump 1 Flow Rate Limit Solenoid (marked SA) (not used)
Install identification tags and disconnect solenoids (Y20, Y21, and Y26).

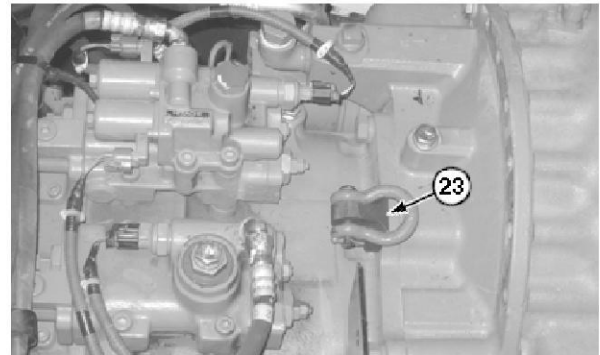


8. TX1092841A-JN: Hoses

LEGEND:
15-Pilot Hose
16-Pilot Hose
17-Split Flange Fitting
18-Split Flange Fitting
19-Suction Hose
20-Return Hose
21-Split Flange Fitting
22-Split Flange Fitting

Install identification tags and disconnect hoses (15, 16, 19, and 20) and remove split flange fittings (17, 18, 21, and 22). Close all openings using caps and plugs.

9.  **CAUTION:**
Prevent possible crushing injury from heavy component. Use appropriate lifting device.

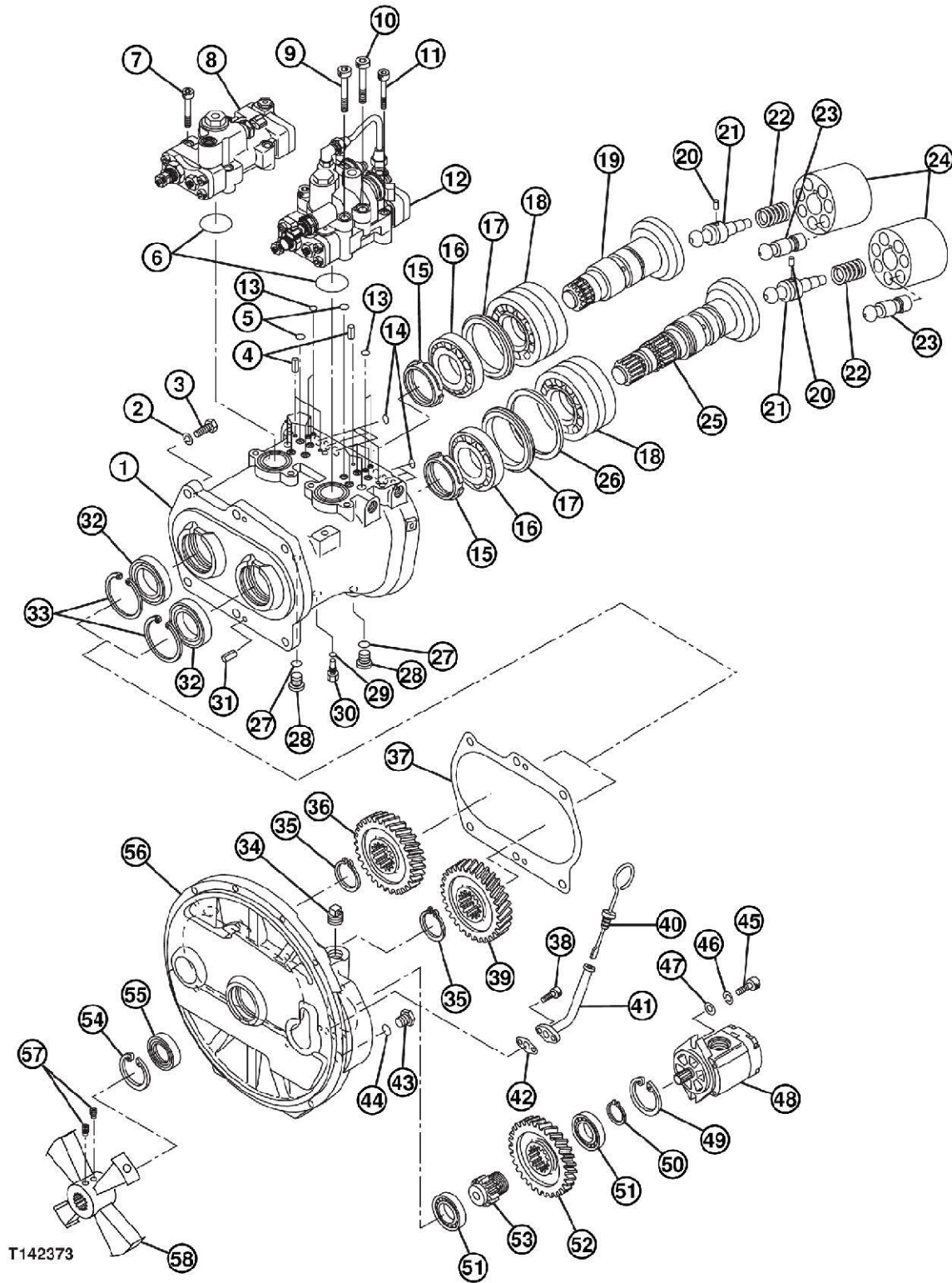


TX1092896A-JN: JT01748 Lifting Bracket

LEGEND:
23-JT01748 Lifting Bracket
Install appropriate lifting device and JT01748 Lifting Bracket (23) to pump drive gear case and pump 1 and 2.

Item	Measurement	Specification
Pump Drive Gear Case and Pump 1 and 2	Weight (approximate)	196 kg 432 lb

Hydraulic System



T142373

T142373-UN: Hydraulic Pump and Pump Drive Gear Case (1 of 2)

LEGEND:

- | | | |
|--------------------------------------|---|---------------------------------|
| 1-Pump Housing | 14-O-Ring (6 used) | 27-O-Ring (2 used) |
| 2-Lock Washer (6 used) | 15-Bearing Nut (2 used) | 28-Plug (2 used) |
| 3-Cap Screw (6 used) | 16-Roller Bearing (2 used) | 29-O-Ring |
| 4-Spring Pin (2 used) | 17-Spacer Ring (2 used) | 30-Fitting |
| 5-O-Ring (10 used) | 18-Roller Bearing (2 used) | 31-Spring Pin (2 used) |
| 6-O-Ring (2 used) | 19-Hydraulic Pump 1 Drive Shaft (front) | 32-Oil Seal (2 used) |
| 7-Cap Screw (4 used) | 20-Pin (2 used) | 33-Snap Ring (2 used) |
| 8-Hydraulic Pump 1 Regulator (front) | 21-Center Shaft (2 used) | 34-Fill Plug |
| 9-Cap Screw (2 used) | 22-Spring (2 used) | 35-Snap Ring (2 used) |
| 10-Cap Screw (2 used) | 23-Piston (14 used) | 36-Hydraulic Pump 1 Driven Gear |
| 11-Cap Screw (2 used) | 24-Cylinder Block (rotor) (2 used) | 37-Gasket |
| 12-Hydraulic Pump 2 Regulator (rear) | 25-Hydraulic Pump 2 Drive Shaft (rear) | 38-Cap Screw (2 used) |
| 13-O-Ring (4 used) | 26-Hydraulic Pump 2 Spacer Ring | 39-Hydraulic Pump 2 Drive Gear |



Thank you very much
for your reading.
Please click here
to get more information.