

John Deere 2254 Sugar Cane Loader Technical Manual (TM131819)

2254 Sugar Cane Loader
Diagnostic and Repair



JOHN HARE



COLLECTION

TECHNICAL MANUAL
2254 Sugar Cane Loader

TM131819 01DEC18 (ENGLISH)



John Deere Thibodaux

Covers: 2254

Type: Service Manual

Language: English

Pages: 362

Format: PDF

Features: Bookmarked, searchable, printable

Compatibility: Windows/Mac/Tablet/Mobile

This service manual contains important information for the maintenance, troubleshooting and servicing of the **John Deere 2254 Sugar Cane Loader Technical Manual (TM131819)**

In this manual you will find detailed specifications, illustrations, schematics, diagrams and step-by-step procedures to properly service and diagnose the machine to the manufacturer's standards.

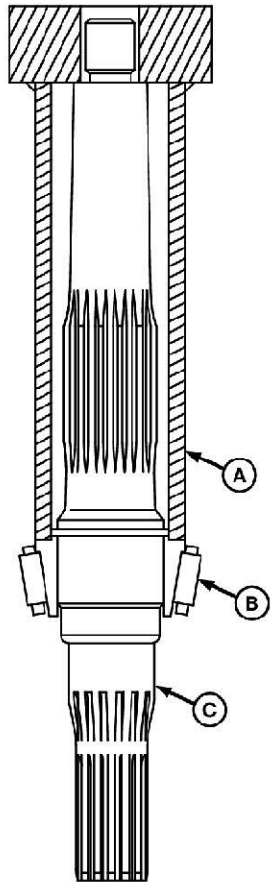
Contents:

- General Information
- Specifications
- Serial Number Location
- Engine Specifications
- Engine Diagnostics
- Engine Tests and Adjustments
- Engine Repair
- Power Train
- Transmission
- Axles
- Differential
- PTO
- Hydraulic System
- Electrical System
- Electrical Tests and Diagnostics
- Wiring Diagram / Schematic
- Ignition and Charging
- Steering
- Brakes
- Wheels
- Operator's Platform
- Body Panels
- Disassembly and Assembly
- Diagnostics, Tests and Adjustments
- Troubleshooting
- and much more...

Please note this manual is in **downloadable PDF format only**. If you have any questions about this product or would like to request sample pages, please contact us and reference the product name or SKU.

IMPORTANT:

7. Do not install bearing cone onto shaft to contact shaft shoulder. Bearing cone on the output end of the motor shaft must be installed to a specific dimension. Use DFT8T2 Bearing Stop Limit Driver for correct installation. (See [DFT8T2—Bearing Stop Limit Driver](#) in Section 199, Group 05.)



T8130001344-UN: DFT8T2 Bearing Stop Limit Driver

LEGEND:

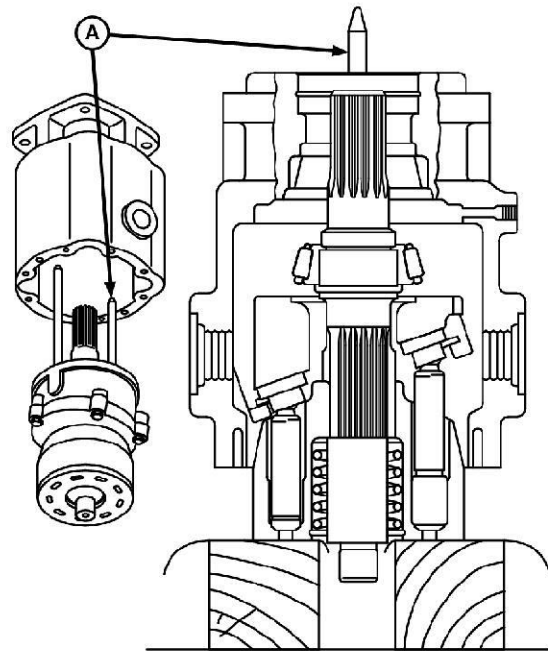
A-DFT8T2 Bearing Stop Limit Driver

B-Bearing Cone

C-Shaft

Using DFT8T2 Bearing Stop Limit Driver (A), install bearing cone (B) onto shaft (C).

8. Carefully position cylinder and swash plate assembly with cylinder face on a clean flat surface. Lubricate and install shaft assembly.



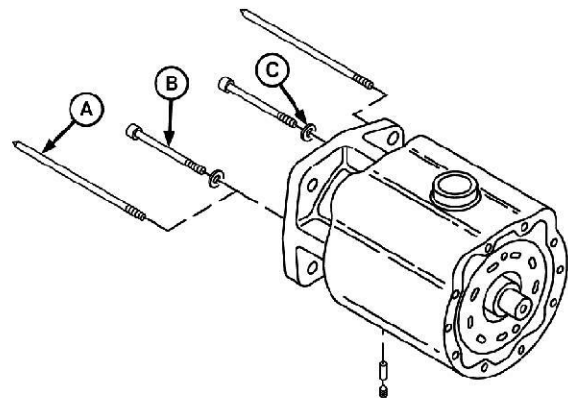
9. H67749-UN: Motor Assembly

LEGEND:

A-Alignment Rod (2 used)

Obtain two 5/16 x 6 in cap screws and remove heads.

10. Chamfer non-threaded end with appropriate grinding device and remove all burrs.
11. Install fabricated alignment rods (A) into the swash plate to use as guides.
12. Align pin in the housing with the notch in swash plate and carefully slide housing over the shaft, swash plate, and cylinder assembly. Insert alignment rods through two holes in housing used for the swash plate cap screws.



13. H7247-UN: Motor Assembly

LEGEND:

A-Alignment Rod (2 used)

B-Cap Screw (2 used)

C-Washer (2 used)


Holding the cylinder assembly carefully in position in the housing, position housing on its side.

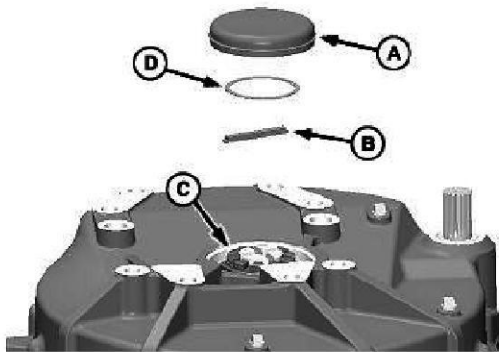
14. Remove alignment rods (A) that were used as guides.

Disassemble and Assemble Final Drive

SPECIAL TOOLS NEEDED:

- Final Drive Spindle Nut Socket
Used to remove and install spindle nut.
Tool Number—JDG665
- Final Drive Repair Kit—Standard Duty
Used to repair final drive.
Tool Number—JDG690
- Final Drive Repair Kit—Heavy Duty
Used to repair final drive.
Tool Number—JDG1296
- 17-1/2 and 30 Ton Puller Set
Used to repair final drive.
Tool Number—D1047AA

1.  **CAUTION:**
Approximate weight of final drive is 233 kg (514 lb). Always use appropriate lifting device to avoid injury or death.



H64172-JN: Final Drive



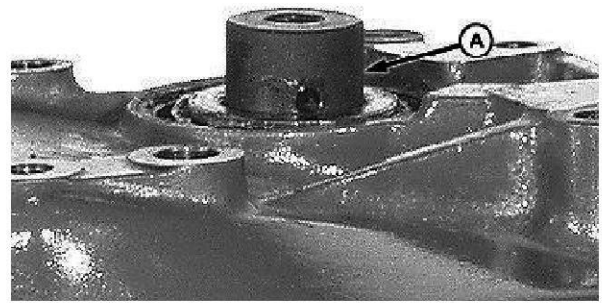
H44022-JN: Final Drive

LEGEND:

- A-Cap**
- B-Key**
- C-Nut**
- D-Retaining Ring**
- E-Socket**

Position final drive with the axle flange downward.

2. Pry off cap (A). Remove retaining ring (D) and key (B).
3. Remove nut (C) using JDG665 Final Drive Spindle Nut Socket [See the SERVICEGARD online tool catalog or your John Deere dealer for additional information.] (E).



4. H71546-UN: Adapter JDG690-3

LEGEND:

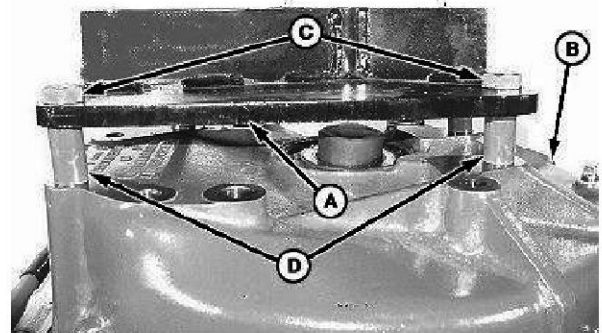
A-Adapter

Install adapter JDG690-3 (A) from JDG690 Final Drive Repair Kit [See the SERVICEGARD online tool catalog or your John Deere dealer for additional information.] to the shaft end.

5. Remove cap screws holding outer housing to the inner housing.

6. NOTE:

Earlier made JDG690-1 Puller Adapter Plates [See the SERVICEGARD online tool catalog or your John Deere dealer for additional information.] may need to be modified for servicing heavy duty final drives. Mounting holes will need to be enlarged to 25 mm (1 in).



H71547-UN: Adapter Plate

LEGEND:

- A-JDG690-1 Adapter Plate** [See the SERVICEGARD online tool catalog or your John Deere dealer for additional information.]
- B-Inner Housing**
- C-Cap Screw (4 used)**
- D-Spacer (4 used)**

Attach JDG690-1 Adapter Plate [See the SERVICEGARD online tool catalog or your John Deere dealer for additional information.] (A) from JDG690 Final Drive Repair Kit [See the SERVICEGARD online tool catalog or your John Deere dealer for additional information.] to the inner housing (B), using 102 mm (4 in) cap screws (C) and 57 mm (2-1/4 in) spacers (D).



Thank you very much
for your reading.
Please click here
to get more information.